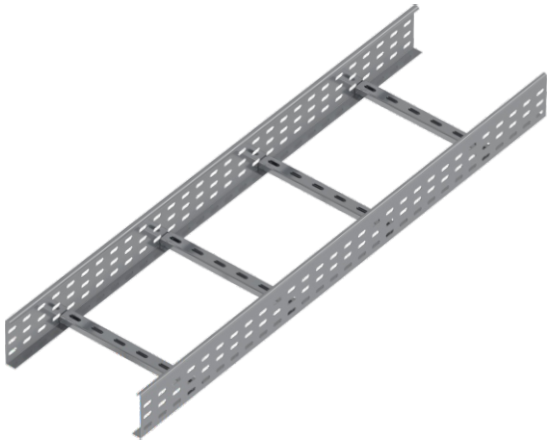


Cable Ladder

Kablo Merdiveni - Кабельросты (Лестничные лотки)



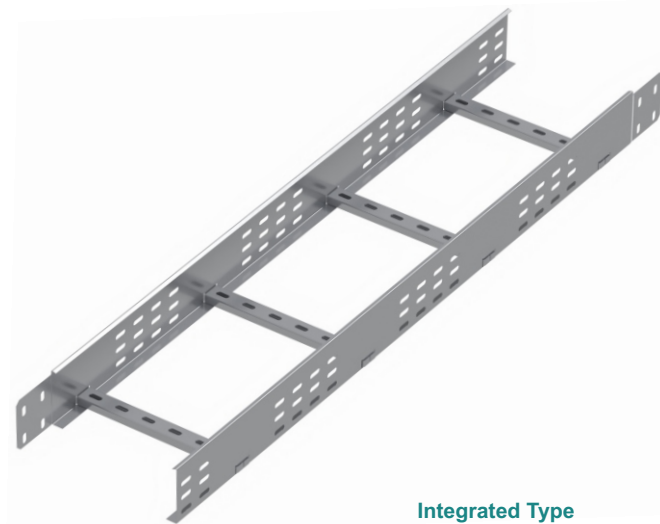
Important!
Joining cable ladder sections together only through the use of couplers 2 pcs for 1 Length
To install cable ladder - straight use Screw Sets CFS M6 or CFS M8

Pre - Galvanised

PKM ...	H100...		1.2mm		PKM ...	H100...		1.5mm	
CODE	Width W mm	Length L mm	KG 1 mt	pcs	CODE	Width W mm	Length L mm	KG 1 mt	pcs
PKM 110 12 PG	100	3000	2.40	2	PKM 110 15 PG	100	3000	3.00	2
PKM 115 12 PG	150	3000	2.50	2	PKM 115 15 PG	150	3000	3.13	2
PKM 120 12 PG	200	3000	2.60	2	PKM 120 15 PG	200	3000	3.25	2
PKM 125 12 PG	250	3000	2.70	2	PKM 125 15 PG	250	3000	3.37	2
PKM 130 12 PG	300	3000	2.80	2	PKM 130 15 PG	300	3000	3.50	2
PKM 140 12 PG	400	3000	3.00	2	PKM 140 15 PG	400	3000	3.74	2
PKM 145 12 PG	450	3000	3.09	2	PKM 145 15 PG	450	3000	3.87	2
PKM 150 12 PG	500	3000	3.19	2	PKM 150 15 PG	500	3000	3.99	2
PKM 160 12 PG	600	3000	3.39	2	PKM 160 15 PG	600	3000	4.24	2

Cable Ladder

Kablo Merdiveni - Кабельросты (Лестничные лотки)



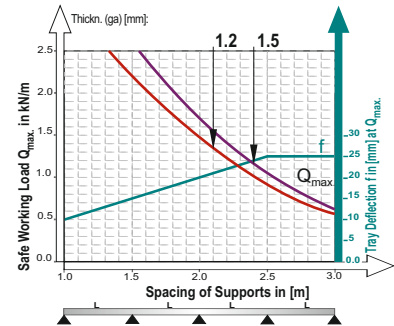
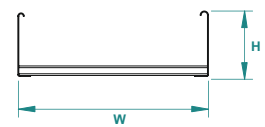
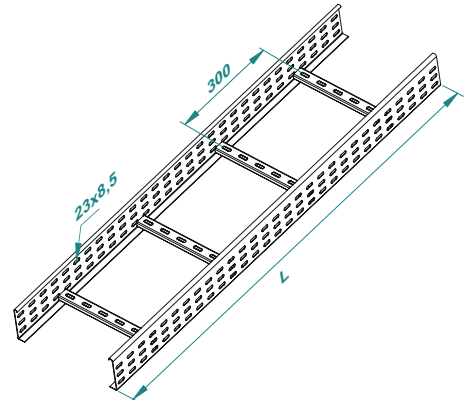
Integrated Type

Important!
To install cable ladder - straight use Screw Sets CFS M6 or CFS M8

Pre - Galvanised

FKM ...	H100...		1.2mm		FKM ...	H100...		1.5mm	
CODE	Width W mm	Length L mm	KG 1 mt	pcs	CODE	Width W mm	Length L mm	KG 1 mt	pcs
FKM 110 12 PG	100	3000	2.40	2	FKM 110 15 PG	100	3000	3.00	2
FKM 115 12 PG	150	3000	2.50	2	FKM 115 15 PG	150	3000	3.13	2
FKM 120 12 PG	200	3000	2.60	2	FKM 120 15 PG	200	3000	3.25	2
FKM 125 12 PG	250	3000	2.70	2	FKM 125 15 PG	250	3000	3.37	2
FKM 130 12 PG	300	3000	2.80	2	FKM 130 15 PG	300	3000	3.50	2
FKM 140 12 PG	400	3000	3.00	2	FKM 140 15 PG	400	3000	3.74	2
FKM 145 12 PG	450	3000	3.09	2	FKM 145 15 PG	450	3000	3.87	2
FKM 150 12 PG	500	3000	3.19	2	FKM 150 15 PG	500	3000	3.99	2
FKM 160 12 PG	600	3000	3.39	2	FKM 160 15 PG	600	3000	4.24	2

PKM H100



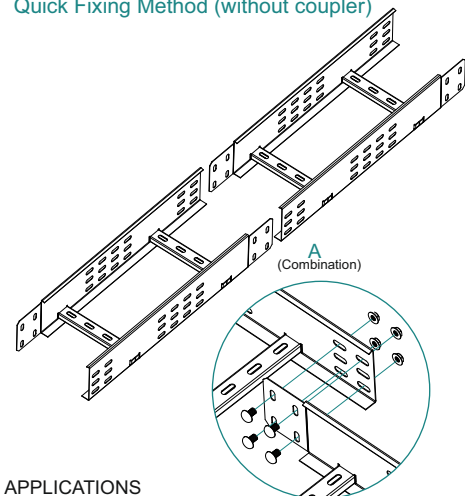
This diagram comply with IEC 61537 with connection to 1/5 of the span and the end span = 0,8x the span

Q = max. admissible load (kg/m)
L = support distance (m)
f = Deflection (mm) / Max. deflection = L/100
Safety co-efficient = 1.5

Width	Usable Cross-Section
50	28 cm ²
100	58 cm ²
150	88 cm ²
200	118 cm ²
300	178 cm ²
400	238 cm ²
500	298 cm ²
600	358 cm ²

FKM H100

Quick Fixing Method (without coupler)



APPLICATIONS

Cable routing

MATERIAL

Steel, strip-galv. acc. to the Sendzimir method to TS-EN 10346:2011 (PG)

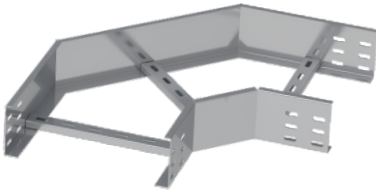
Available finishes:

HDG-steel, hot-dip galv. to TS-EN ISO 1461:2011 (HDG)
SS- stainless steel AISI 304L and AISI 316L (SS)
EP- powder coating in a full range of colours (RAL)

Thickn. (ga) [mm]: 1.2 1.5

90° Horizontal Bend of Cable Ladder

90° Merdiven Yatay Dönüş Elemanı - Угол кабельроста горизонтальный 90°



Important!

Joining cable tray sections together only through the use of couplers and Screw Sets CFS M6 or CFS M8

Pre - Galvanised

PM90 ...	H100...	1.2mm		
CODE	Width W a=b	kg 1 pc	pcs	
PM90 110 12 PG	100	1.24	1	
PM90 115 12 PG	150	1.46	1	
PM90 120 12 PG	200	1.66	1	
PM90 125 12 PG	250	1.88	1	
PM90 130 12 PG	300	2.09	1	
PM90 140 12 PG	400	2.51	1	
PM90 145 12 PG	450	2.73	1	
PM90 150 12 PG	500	2.93	1	
PM90 160 12 PG	600	3.36	1	

		1.5mm		
CODE	Width W a=b	kg 1 pc	pcs	
PM90 110 15 PG	100	1.55	1	
PM90 115 15 PG	150	1.82	1	
PM90 120 15 PG	200	2.08	1	
PM90 125 15 PG	250	2.35	1	
PM90 130 15 PG	300	2.61	1	
PM90 140 15 PG	400	3.14	1	
PM90 145 15 PG	450	3.40	1	
PM90 150 15 PG	500	3.67	1	
PM90 160 15 PG	600	4.20	1	

Integrated Type

Important!

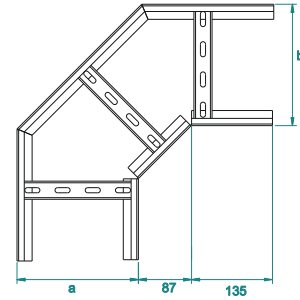
To instal cable tray - bend use Screw Sets CFS M6 OR CFS M8

Pre - Galvanised

MF90 ...	H100...	1.2mm		
CODE	Width W a=b	kg 1 pc	pcs	
MF90 110 12 PG	100	1.24	1	
MF90 115 12 PG	150	1.46	1	
MF90 120 12 PG	200	1.66	1	
MF90 125 12 PG	250	1.88	1	
MF90 130 12 PG	300	2.09	1	
MF90 140 12 PG	400	2.51	1	
MF90 145 12 PG	450	2.73	1	
MF90 150 12 PG	500	2.93	1	
MF90 160 12 PG	600	3.36	1	

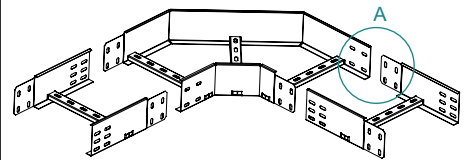
		1.5mm		
CODE	Width W a=b	kg 1 pc	pcs	
MF90 110 15 PG	100	1.55	1	
MF90 115 15 PG	150	1.82	1	
MF90 120 15 PG	200	2.08	1	
MF90 125 15 PG	250	2.35	1	
MF90 130 15 PG	300	2.61	1	
MF90 140 15 PG	400	3.14	1	
MF90 145 15 PG	450	3.40	1	
MF90 150 15 PG	500	3.67	1	
MF90 160 15 PG	600	4.20	1	

PM90 H100

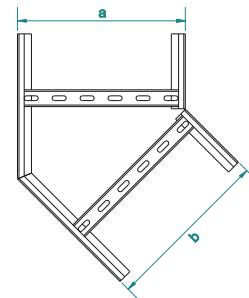


MF90 H100

Quick Fixing Method (without coupler)

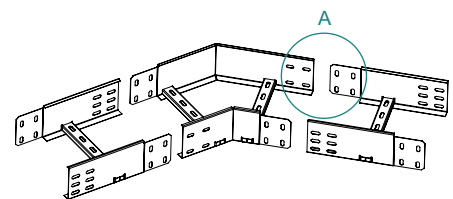


PM45 H100

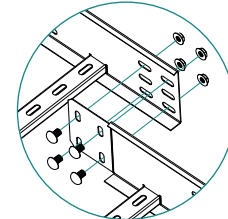


MF45 H100

Quick Fixing Method (without coupler)

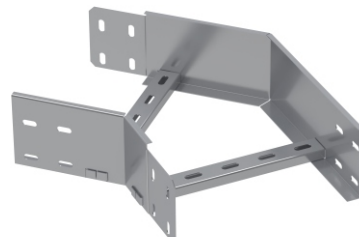


(Combination)



45° Horizontal Bend of Cable Ladder

45° Merdiven Yatay Dönüş Elemanı - Угол кабельроста горизонтальный 45°



Important!

Joining cable tray sections together only through the use of couplers and Screw Sets CFS M6 or CFS M8

Pre - Galvanised

PM45 ...	H100...	1.2mm		
CODE	Width W a=b	kg 1 pc	pcs	
PM45 110 12 PG	100	1.13	1	
PM45 115 12 PG	150	1.24	1	
PM45 120 12 PG	200	1.36	1	
PM45 125 12 PG	250	1.48	1	
PM45 130 12 PG	300	1.61	1	
PM45 140 12 PG	400	1.85	1	
PM45 145 12 PG	450	1.97	1	
PM45 150 12 PG	500	2.09	1	
PM45 160 12 PG	600	2.33	1	

		1.5mm		
CODE	Width W a=b	kg 1 pc	pcs	
PM45 110 15 PG	100	1.41	1	
PM45 115 15 PG	150	1.55	1	
PM45 120 15 PG	200	1.71	1	
PM45 125 15 PG	250	1.86	1	
PM45 130 15 PG	300	2.01	1	
PM45 140 15 PG	400	2.31	1	
PM45 145 15 PG	450	2.46	1	
PM45 150 15 PG	500	2.61	1	
PM45 160 15 PG	600	2.92	1	

Integrated Type

Important!

To instal cable tray - bend use Screw Sets CFS M6 OR CFS M8

Pre - Galvanised

MF45 ...	H100...	1.2mm		
CODE	Width W a=b	kg 1 pc	pcs	
MF45 110 12 PG	100	1.13	1	
MF45 115 12 PG	150	1.24	1	
MF45 120 12 PG	200	1.36	1	
MF45 125 12 PG	250	1.48	1	
MF45 130 12 PG	300	1.61	1	
MF45 140 12 PG	400	1.85	1	
MF45 145 12 PG	450	1.97	1	
MF45 150 12 PG	500	2.09	1	
MF45 160 12 PG	600	2.33	1	

		1.5mm		
CODE	Width W a=b	kg 1 pc	pcs	
MF45 110 15 PG	100	1.41	1	
MF45 115 15 PG	150	1.55	1	
MF45 120 15 PG	200	1.71	1	
MF45 125 15 PG	250	1.86	1	
MF45 130 15 PG	300	2.01	1	
MF45 140 15 PG	400	2.31	1	
MF45 145 15 PG	450	2.46	1	
MF45 150 15 PG	500	2.61	1	
MF45 160 15 PG	600	2.92	1	

APPLICATIONS

Cable routing

MATERIAL

Steel, strip-galv. acc. to the Sendzimir method to TS-EN 10346:2011 (PG)

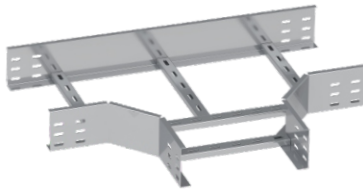
Available finishes:

HDG-steel, hot-dip galv. to TS-EN ISO 1461:2011 (HDG)
SS- stainless steel AISI 304L and AISI 316L (SS)
EP- powder coating in a full range of colours (RAL)

Thickn. (ga) [mm]: 1.2 1.5

Te Horizontal Bend of Cable Ladder

"T" Merdiven Yatay Dönüş Elemanı - T-отвод кабельроста горизонтальный



Important!

Joining cable tray sections together only through the use of couplers and Screw Sets CFS M6 or CFS M8

Integrated Type

Important!

To instal cable tray - bend use Screw Sets CFS M6 OR CFS M8

Pre - Galvanised

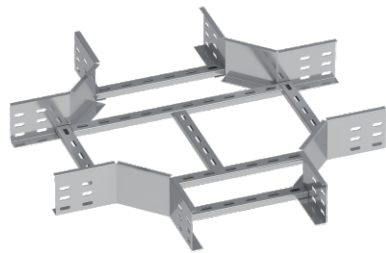
PMT ...	H100...	1.2mm		
CODE	Width W a=b=c	kg 1 pc	pcs	
PMT 110 12 PG	100	1.59	1	
PMT 115 12 PG	150	1.76	1	
PMT 120 12 PG	200	1.92	1	
PMT 125 12 PG	250	2.35	1	
PMT 130 12 PG	300	2.55	1	
PMT 140 12 PG	400	3.25	1	
PMT 145 12 PG	450	3.50	1	
PMT 150 12 PG	500	3.74	1	
PMT 160 12 PG	600	4.22	1	
1.5mm				
CODE	Width W a=b=c	kg 1 pc	pcs	
PMT 110 15 PG	100	1.93	1	
PMT 115 15 PG	150	2.11	1	
PMT 120 15 PG	200	2.29	1	
PMT 125 15 PG	250	2.73	1	
PMT 130 15 PG	300	2.94	1	
PMT 140 15 PG	400	3.68	1	
PMT 145 15 PG	450	3.93	1	
PMT 150 15 PG	500	4.19	1	
PMT 160 15 PG	600	4.69	1	

Pre - Galvanised

MFT ...	H100...	1.2mm		
CODE	Width W a=b=c	kg 1 pc	pcs	
MFT 110 12 PG	100	1.59	1	
MFT 115 12 PG	150	1.76	1	
MFT 120 12 PG	200	1.92	1	
MFT 125 12 PG	250	2.35	1	
MFT 130 12 PG	300	2.55	1	
MFT 140 12 PG	400	3.25	1	
MFT 145 12 PG	450	3.50	1	
MFT 150 12 PG	500	3.74	1	
MFT 160 12 PG	600	4.22	1	
1.5mm				
CODE	Width W a=b=c	kg 1 pc	pcs	
MFT 110 15 PG	100	1.93	1	
MFT 115 15 PG	150	2.11	1	
MFT 120 15 PG	200	2.29	1	
MFT 125 15 PG	250	2.73	1	
MFT 130 15 PG	300	2.94	1	
MFT 140 15 PG	400	3.68	1	
MFT 145 15 PG	450	3.93	1	
MFT 150 15 PG	500	4.19	1	
MFT 160 15 PG	600	4.69	1	

Cross Bend of Cable Ladder

Dörtlü Merdiven Dönüş Elemanı - Крестовина кабельроста



Important!

Joining cable tray sections together only through the use of couplers and Screw Sets CFS M6 or CFS M8

Integrated Type

Important!

To instal cable tray - bend use Screw Sets CFS M6 OR CFS M8

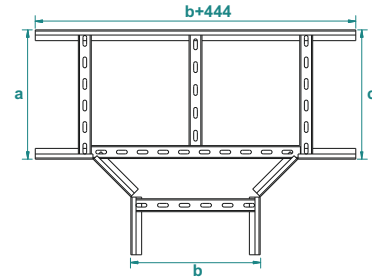
Pre - Galvanised

PMD...	H100...	1.2mm		
CODE	Width W a=b=c=d	kg 1 pc	pcs	
PMD 110 12 PG	100	1.93	1	
PMD 115 12 PG	150	2.07	1	
PMD 120 12 PG	200	2.22	1	
PMD 125 12 PG	250	2.63	1	
PMD 130 12 PG	300	2.82	1	
PMD 140 12 PG	400	3.19	1	
PMD 145 12 PG	450	3.78	1	
PMD 150 12 PG	500	4.00	1	
PMD 160 12 PG	600	4.45	1	
1.5mm				
CODE	Width W a=b=c=d	kg 1 pc	pcs	
PMD 110 15 PG	100	2.34	1	
PMD 115 15 PG	150	2.49	1	
PMD 120 15 PG	200	2.64	1	
PMD 125 15 PG	250	3.04	1	
PMD 130 15 PG	300	3.23	1	
PMD 140 15 PG	400	3.60	1	
PMD 145 15 PG	450	4.19	1	
PMD 150 15 PG	500	4.42	1	
PMD 160 15 PG	600	4.86	1	

Pre - Galvanised

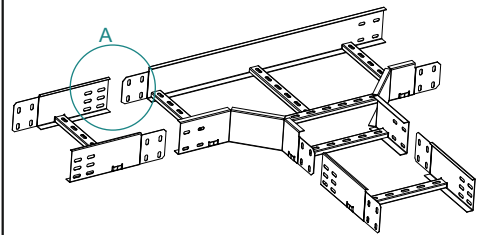
MFD...	H100...	1.2mm		
CODE	Width W a=b=c=d	kg 1 pc	pcs	
MFD 110 12 PG	100	1.93	1	
MFD 115 12 PG	150	2.07	1	
MFD 120 12 PG	200	2.22	1	
MFD 125 12 PG	250	2.63	1	
MFD 130 12 PG	300	2.82	1	
MFD 140 12 PG	400	3.19	1	
MFD 145 12 PG	450	3.78	1	
MFD 150 12 PG	500	4.00	1	
MFD 160 12 PG	600	4.45	1	
1.5mm				
CODE	Width W a=b=c=d	kg 1 pc	pcs	
MFD 110 15 PG	100	2.34	1	
MFD 115 15 PG	150	2.49	1	
MFD 120 15 PG	200	2.64	1	
MFD 125 15 PG	250	3.04	1	
MFD 130 15 PG	300	3.23	1	
MFD 140 15 PG	400	3.60	1	
MFD 145 15 PG	450	4.19	1	
MFD 150 15 PG	500	4.42	1	
MFD 160 15 PG	600	4.86	1	

PMT H100

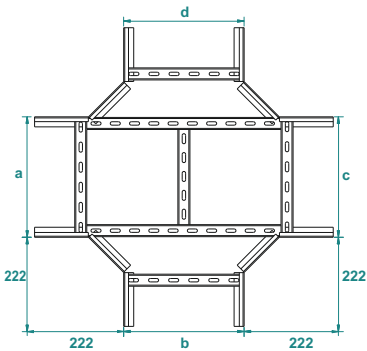


MFT H100

Quick Fixing Method (without coupler)

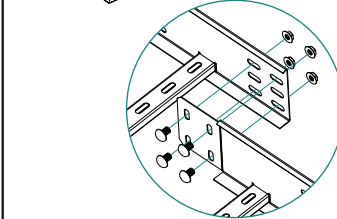
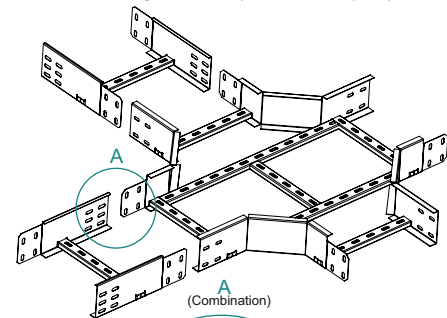


PMD H100



MFD H100

Quick Fixing Method (without coupler)



APPLICATIONS
Cable routing

MATERIAL

Steel, strip-galv. acc. to the Sendzimir method to TS-EN 10346:2011 (PG)

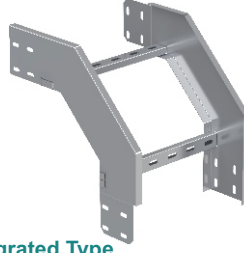
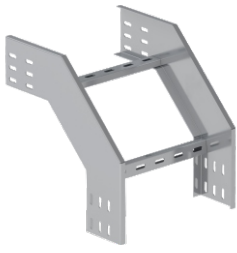
Available finishes:

HDG-steel, hot-dip galv. to TS-EN ISO 1461:2011 (HDG)
SS- stainless steel AISI 304L and AISI 316L (SS)
EP- powder coating in a full range of colours (RAL)

Thickn. (ga) [mm]: 1.2 | 1.5

Vertical 90° Outside Bend of Cable Ladder (Stable)

90° Dikey Merdiven Dış Bükey Elemanı - (Sabit) - Арка фиксированная кабельроста, внешняя 90°



Important!
Joining cable tray sections together only through the use of couplers and Screw Sets CFS M6 or CFS M8

Integrated Type

Important!
To instal cable tray - bend use Screw Sets CFS M6 OR CFS M8

Pre - Galvanised

PMDS ...	H100...	1.2mm		
CODE	Width W a mm	Kg 1 pc	pcs	
PMDS 110 12 PG	100	1.50	1	
PMDS 115 12 PG	150	1.59	1	
PMDS 120 12 PG	200	1.68	1	
PMDS 125 12 PG	250	1.77	1	
PMDS 130 12 PG	300	1.86	1	
PMDS 140 12 PG	400	2.37	1	
PMDS 145 12 PG	450	2.46	1	
PMDS 150 12 PG	500	2.55	1	
PMDS 160 12 PG	600	2.72	1	

Pre - Galvanised

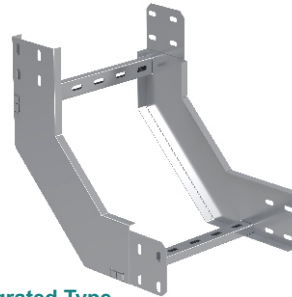
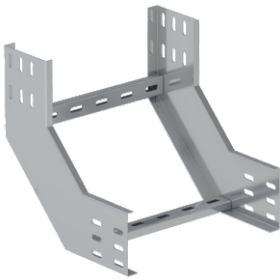
MFDS ...	H100...	1.2mm		
CODE	Width W a mm	Kg 1 pc	pcs	
MFDS 110 12 PG	100	1.50	1	
MFDS 115 12 PG	150	1.59	1	
MFDS 120 12 PG	200	1.68	1	
MFDS 125 12 PG	250	1.77	1	
MFDS 130 12 PG	300	1.86	1	
MFDS 140 12 PG	400	2.37	1	
MFDS 145 12 PG	450	2.46	1	
MFDS 150 12 PG	500	2.55	1	
MFDS 160 12 PG	600	2.72	1	

		1.5mm		
CODE	Width W a mm	Kg 1 pc	pcs	
PMDS 110 15 PG	100	1.88	1	
PMDS 115 15 PG	150	1.99	1	
PMDS 120 15 PG	200	2.10	1	
PMDS 125 15 PG	250	2.21	1	
PMDS 130 15 PG	300	2.32	1	
PMDS 140 15 PG	400	2.96	1	
PMDS 145 15 PG	450	3.07	1	
PMDS 150 15 PG	500	3.18	1	
PMDS 160 15 PG	600	3.41	1	

		1.5mm		
CODE	Width W a mm	Kg 1 pc	pcs	
MFDS 110 15 PG	100	1.88	1	
MFDS 115 15 PG	150	1.99	1	
MFDS 120 15 PG	200	2.10	1	
MFDS 125 15 PG	250	2.21	1	
MFDS 130 15 PG	300	2.32	1	
MFDS 140 15 PG	400	2.96	1	
MFDS 145 15 PG	450	3.07	1	
MFDS 150 15 PG	500	3.18	1	
MFDS 160 15 PG	600	3.41	1	

Vertical 90° Inside Bend of Cable Ladder (Stable)

90° Dikey Merdiven İç Bükey Elemanı - (Sabit) - Арка фиксированная кабельроста, внутренняя 90°



Important!
Joining cable tray sections together only through the use of couplers and Screw Sets CFS M6 or CFS M8

Integrated Type

Important!
To instal cable tray - bend use Screw Sets CFS M6 OR CFS M8

Pre - Galvanised

PMIS...	H100...	1.2mm		
CODE	Width W a=b	Kg 1 pc	pcs	
PMIS 110 12 PG	100	1.50	1	
PMIS 115 12 PG	150	1.59	1	
PMIS 120 12 PG	200	1.68	1	
PMIS 125 12 PG	250	1.77	1	
PMIS 130 12 PG	300	1.86	1	
PMIS 140 12 PG	400	2.37	1	
PMIS 145 12 PG	450	2.46	1	
PMIS 150 12 PG	500	2.55	1	
PMIS 160 12 PG	600	2.72	1	

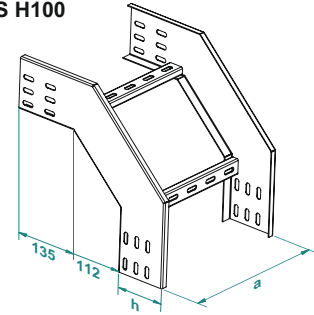
Pre - Galvanised

MFIS...	H100...	1.2mm		
CODE	Width W a=b	Kg 1 pc	pcs	
MFIS 110 12 PG	100	1.50	1	
MFIS 115 12 PG	150	1.59	1	
MFIS 120 12 PG	200	1.68	1	
MFIS 125 12 PG	250	1.77	1	
MFIS 130 12 PG	300	1.86	1	
MFIS 140 12 PG	400	2.37	1	
MFIS 145 12 PG	450	2.46	1	
MFIS 150 12 PG	500	2.55	1	
MFIS 160 12 PG	600	2.72	1	

		1.5mm		
CODE	Width W a=b	Kg 1 pc	pcs	
PMIS 110 15 PG	100	1.88	1	
PMIS 115 15 PG	150	1.99	1	
PMIS 120 15 PG	200	2.10	1	
PMIS 125 15 PG	250	2.21	1	
PMIS 130 15 PG	300	2.32	1	
PMIS 140 15 PG	400	2.96	1	
PMIS 145 15 PG	450	3.07	1	
PMIS 150 15 PG	500	3.18	1	
PMIS 160 15 PG	600	3.41	1	

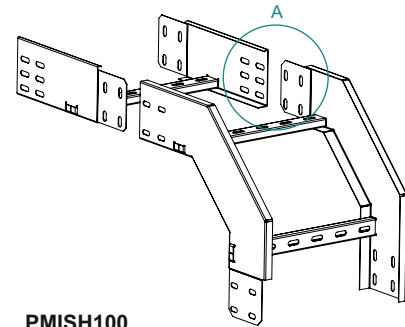
		1.5mm		
CODE	Width W a=b	Kg 1 pc	pcs	
MFIS 110 15 PG	100	1.88	1	
MFIS 115 15 PG	150	1.99	1	
MFIS 120 15 PG	200	2.10	1	
MFIS 125 15 PG	250	2.21	1	
MFIS 130 15 PG	300	2.32	1	
MFIS 140 15 PG	400	2.96	1	
MFIS 145 15 PG	450	3.07	1	
MFIS 150 15 PG	500	3.18	1	
MFIS 160 15 PG	600	3.41	1	

PMDS H100

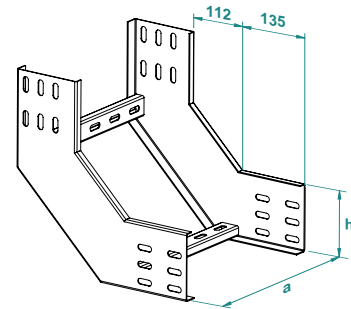


PMDS H100

Quick Fixing Method (without coupler)

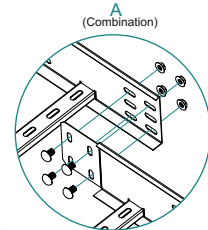
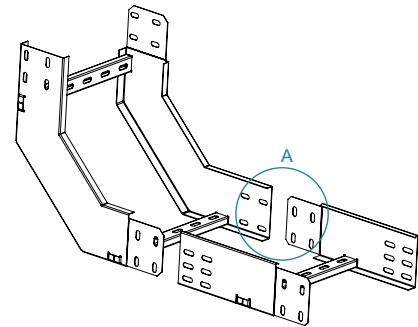


PMISH100



PMDS H100

Quick Fixing Method (without coupler)



APPLICATIONS
Cable routing

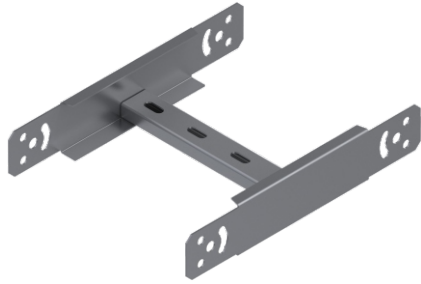
MATERIAL
Steel, strip-galv. acc. to the Sendzimir method to TS-EN 10346:2011 (PG)

Available finishes:
HDG-steel, hot-dip galv. to TS-EN ISO 1461:2011 (HDG)
SS- stainless steel AISI 304L and AISI 316L (SS)
EP- powder coating in a full range of colours (RAL)

Thickn. (ga) [mm]: **1.2 1.5**

Modular Adjustable Cable Ladder Riser

Modüler Merdiven İniş - Çıkış Elemanı - Шарнирный элемент дуги кабельроста



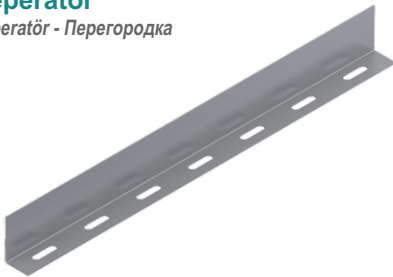
Important!
To install cable tray - bend use Screw Sets CFS M6 or CFS M8

Pre - Galvanised

PMMB ... H100... 1.2mm				PMMB ... H100... 1.5mm			
CODE	Width W a mm	KG 1 pc	pcs	CODE	Width W a mm	KG 1 pc	pcs
PMMB 110 12 PG	100	0.72	1	PMMB 110 15 PG	100	0.90	1
PMMB 115 12 PG	150	0.75	1	PMMB 115 15 PG	150	0.94	1
PMMB 120 12 PG	200	0.78	1	PMMB 120 15 PG	200	0.98	1
PMMB 125 12 PG	250	0.81	1	PMMB 125 15 PG	250	1.01	1
PMMB 130 12 PG	300	0.84	1	PMMB 130 15 PG	300	1.05	1
PMMB 140 12 PG	400	0.89	1	PMMB 140 15 PG	400	1.12	1
PMMB 145 12 PG	450	0.92	1	PMMB 145 15 PG	450	1.16	1
PMMB 150 12 PG	500	0.95	1	PMMB 150 15 PG	500	1.20	1
PMMB 160 12 PG	600	1.01	1	PMMB 160 15 PG	600	1.27	1

Seperator

Seperator - Перегородка



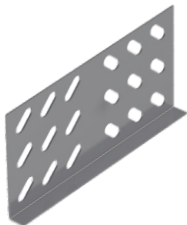
To Install Seperator use CFS bolts and nuts. (M6 or M8)

Pre - Galvanised

SEP 1 ... H85 1.0mm				SEP 1 ... H85 1.5mm			
CODE	Length L mm	KG 1m	pcs	CODE	Length L mm	KG 1m	pcs
SEP 185 10 PG	3000	0.75	1	SEP 185 15 PG	3000	1.12	1

Straight Connector (Coupler)

Birleştirme Elemanı - Прямой соединитель



To Install one lenght ;use 2 pieces of KBE connector 8 sets of CFS bolts and nuts. (M6 or M8)

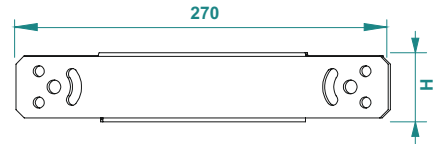
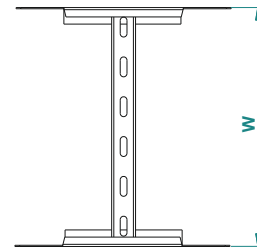
Pre - Galvanised

KBE 2 ... H100 1.2mm				KBE 2 ... H100 1.5mm			
CODE	Length L mm	KG 1pc	pcs	CODE	Length L mm	KG 1 pc	pcs
KBE 210 12 PG	175	0.14	100	KBE 210 15 PG	0,15	0.18	100

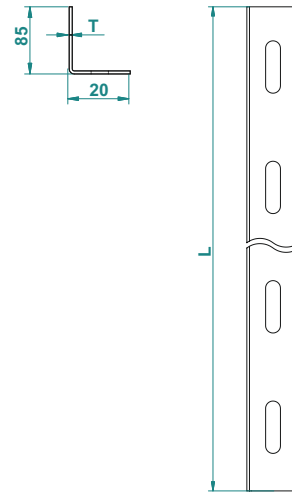
Electro - Galvanized

CFS M6 M6				CFS M8 M8					
CODE	Size mm	Length L mm	KG 1Set	pcs	CODE	Size mm	Length L mm	KG 1Set	pcs
CFS M6 EG	M6	15	0,008	500	CFS M8 EG	M8	15	0,014	500

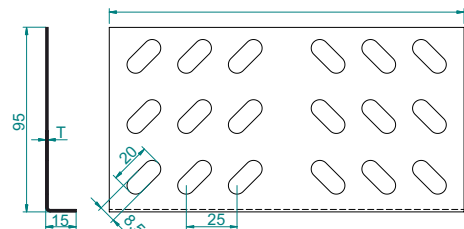
PMMB H100



SEP 1 H85



KBE 2 H100



M6x15 Round head squire neck bolt & M6 Flanged nut

APPLICATIONS

Cable routing

MATERIAL

Steel, strip-galv. acc. to the Sendzimir method to TS-EN 10346:2011 (PG)

Available finishes:

HDG-steel, hot-dip galv. to TS-EN ISO 1461:2011 (HDG)
SS- stainless steel AISI 304L and AISI 316L (SS)
EP- powder coating in a full range of colours (RAL)

Thickn. (ga) [mm]: **1.2 | 1.5**