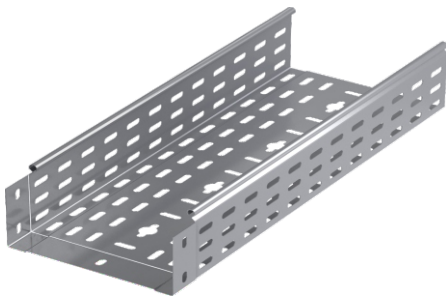


Integrated Perforated Cable Trays - Return Flanges

Geçmeli Tip Kablo Kanalı - Интегрированные Перфорированные лотки



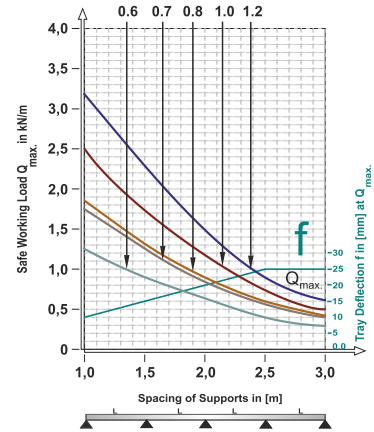
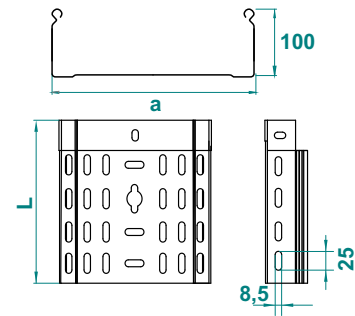
Important!
Joining cable tray sections together only use
Screw Sets CFS M6 or CFS M8

Pre - Galvanised

FPK ... H100		0.6mm			
CODE	Width a mm	Length L mm	Kg 1 pc	pcs	
FPK 110 06 PG	100	3000	1.20	2	
FPK 112 06 PG	125	3000	1.30	2	
FPK 115 06 PG	150	3000	1.39	2	
FPK 120 06 PG	200	3000	1.58	2	
		0.7mm			
FPK 110 07 PG	100	3000	1.40	2	
FPK 112 07 PG	125	3000	1.51	2	
FPK 115 07 PG	150	3000	1.62	2	
FPK 120 07 PG	200	3000	1.84	2	
		0.8mm			
FPK 110 08 PG	100	3000	1.60	2	
FPK 112 08 PG	125	3000	1.72	2	
FPK 115 08 PG	150	3000	1.85	2	
FPK 120 08 PG	200	3000	2.10	2	
FPK 122 08 PG	225	3000	2.22	2	
FPK 125 08 PG	250	3000	2.35	2	
FPK 130 08 PG	300	3000	2.60	2	

FPK ... H100		1.0mm			
CODE	Width a mm	Length L mm	Kg 1 pc	pcs	
FPK 110 10 PG	100	3000	1.99	2	
FPK 112 10 PG	125	3000	2.14	2	
FPK 115 10 PG	150	3000	2.30	2	
FPK 120 10 PG	200	3000	2.62	2	
FPK 122 10 PG	225	3000	2.78	2	
FPK 125 10 PG	250	3000	2.93	2	
FPK 130 10 PG	300	3000	3.25	2	
FPK 140 10 PG	400	3000	3.87	2	
FPK 145 10 PG	450	3000	4.01	2	
FPK 150 10 PG	500	3000	4.32	2	
FPK 160 10 PG	600	3000	4.92	2	
		1.2mm			
FPK 110 12 PG	100	3000	2.38	2	
FPK 112 12 PG	125	3000	2.58	2	
FPK 115 12 PG	150	3000	2.76	2	
FPK 120 12 PG	200	3000	3.14	2	
FPK 122 12 PG	225	3000	3.33	2	
FPK 125 12 PG	250	3000	3.51	2	
FPK 130 12 PG	300	3000	3.90	2	
FPK 140 12 PG	400	3000	4.65	2	
FPK 145 12 PG	450	3000	5.02	2	
FPK 150 12 PG	500	3000	5.40	2	
FPK 160 12 PG	600	3000	6.15	2	

FPK H100



This diagram comply with IEC 61537 with connection to 1/5 of the span and the end span = 0,8x the span
 $Q = \text{max. admissible load (kg/m)}$
 $L = \text{support distance (m)}$
 $f = \text{Deflection (mm) / Max. deflection} = L/100$
 Safety co-efficient = 1.5

Width	Usable Cross-Section
100	98 cm ²
150	148 cm ²
200	198 cm ²
300	298 cm ²
400	398 cm ²
500	498 cm ²
600	598 cm ²

APPLICATIONS

Cable routing

MATERIAL

Steel, strip-galv. acc. to the Sendzimir method to TS-EN 10346:2011 (PG)

Available finishes:

- HDG-steel, hot-dip galv. to TS-EN ISO 1461:2011 (HDG)
- SS- stainless steel AISI 304L and AISI 316L (SS)
- EP- powder coating in a full range of colours (RAL)

Thickn. (ga) [mm]: **0.6 | 0.8 | 1.0 | 1.2**

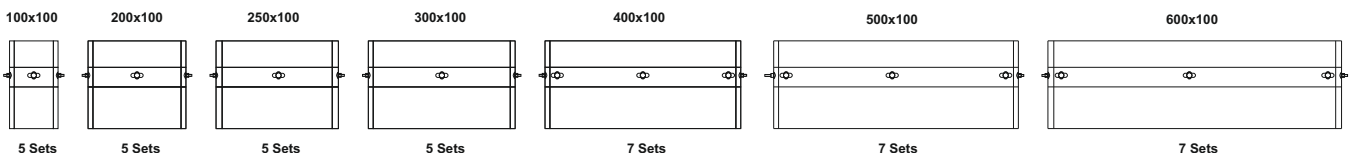
Quick Cover Fixing
Click Type

Round Flange Protection
Strength

Integrated ends
Coupleless Quick Connection

Recommended Quantities of Bolt and Nut For Integrated Cable Tray Connections

W	H	Width Of Cable Tray						
		40	50	60	75	80	85	100
50	2 Sets	2 Sets	2 Sets	—	—	—	—	
100	3 Sets	3 Sets	3 Sets	5 Sets	5 Sets	5 Sets	5 Sets	
150	3 Sets	3 Sets	3 Sets	5 Sets	5 Sets	5 Sets	5 Sets	
200	3 Sets	3 Sets	3 Sets	5 Sets	5 Sets	5 Sets	5 Sets	
250	3 Sets	3 Sets	3 Sets	5 Sets	5 Sets	5 Sets	5 Sets	
300	3 Sets	3 Sets	3 Sets	5 Sets	5 Sets	5 Sets	5 Sets	
400	5 Sets	5 Sets	5 Sets	7 Sets	7 Sets	7 Sets	7 Sets	
500	5 Sets	5 Sets	5 Sets	7 Sets	7 Sets	7 Sets	7 Sets	
600	5 Sets	5 Sets	5 Sets	7 Sets	7 Sets	7 Sets	7 Sets	



Integrated Perforated Cable Trays - Return Flanges

Geçmeli Tip Kablo Kanalı - Интегрированные Перфорированные лотки

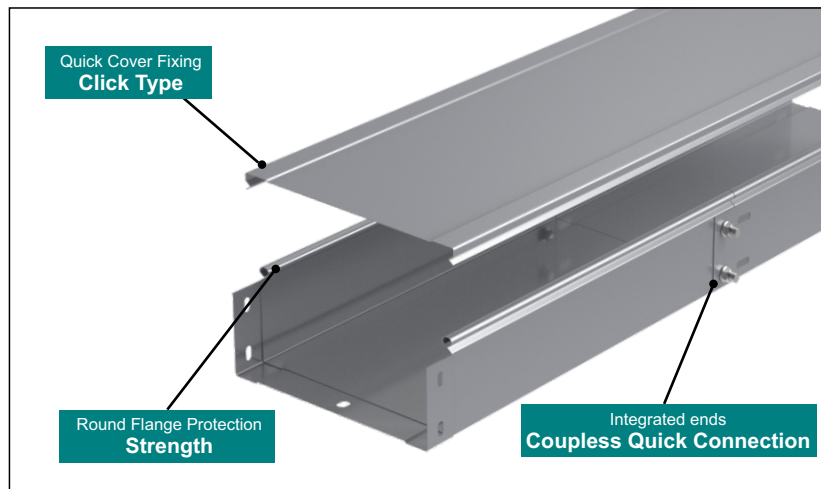


Important!
Joining cable tray sections together only use
Screw Sets CFS M6 or CFS M8

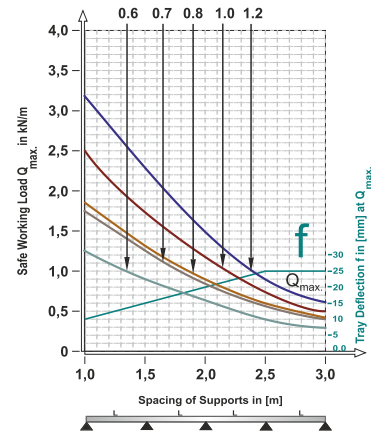
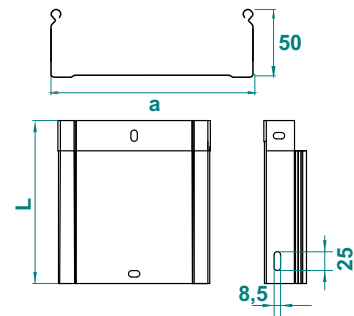
Pre - Galvanised

FDK ... H100		0.6mm		
CODE	Width a mm	Length L mm	Weight 1 pc kg	pcs
FDK 110 06 PG	100	3000	1.50	2
FDK 112 06 PG	125	3000	1.62	2
FDK 115 06 PG	150	3000	1.74	2
FDK 120 06 PG	200	3000	1.97	2
		0.7mm		
FDK 110 07 PG	100	3000	1.75	2
FDK 112 07 PG	125	3000	1.89	2
FDK 115 07 PG	150	3000	2.03	2
FDK 120 07 PG	200	3000	2.30	2
		0.8mm		
FDK 110 08 PG	100	3000	2.00	2
FDK 112 08 PG	125	3000	2.15	2
FDK 115 08 PG	150	3000	2.31	2
FDK 120 08 PG	200	3000	2.62	2
FDK 122 08 PG	225	3000	2.78	2
FDK 125 08 PG	250	3000	2.94	2
FDK 130 08 PG	300	3000	3.25	2

FDK ... H100		1.0mm		
CODE	Width a mm	Length L mm	Weight 1 pc kg	pcs
FDK 110 10 PG	100	3000	2.49	2
FDK 112 10 PG	125	3000	2.68	2
FDK 115 10 PG	150	3000	2.88	2
FDK 120 10 PG	200	3000	3.27	2
FDK 122 10 PG	225	3000	3.47	2
FDK 125 10 PG	250	3000	3.66	2
FDK 130 10 PG	300	3000	4.06	2
FDK 140 10 PG	400	3000	4.84	2
FDK 145 10 PG	450	3000	5.02	2
FDK 150 10 PG	500	3000	5.40	2
FDK 160 10 PG	600	3000	6.15	2
		1.2mm		
FDK 110 12 PG	100	3000	2.89	2
FDK 112 12 PG	125	3000	3.22	2
FDK 115 12 PG	150	3000	3.45	2
FDK 120 12 PG	200	3000	3.92	2
FDK 122 12 PG	225	3000	4.16	2
FDK 125 12 PG	250	3000	4.39	2
FDK 130 12 PG	300	3000	4.87	2
FDK 140 12 PG	400	3000	5.81	2
FDK 145 12 PG	450	3000	6.28	2
FDK 150 12 PG	500	3000	6.75	2
FDK 160 12 PG	600	3000	7.69	2



FPK H100



This diagram comply with IEC 61537 with connection to 1/5 of the span and the end span = 0,8x the span
Q = max. admissible load (kg/m)
L = support distance (m)

f = Deflection (mm) / Max. deflection = L/100
Safety co-efficient = 1.5



APPLICATIONS
Cable routing

MATERIAL

Steel, strip-galv. acc. to the Sendzimir method to TS-EN 10346:2011 (PG)

Available finishes:

- HDG-steel, hot-dip galv. to TS-EN ISO 1461:2011 (HDG)
- SS- stainless steel AISI 304L and AISI 316L (SS)
- EP- powder coating in a full range of colours (RAL)

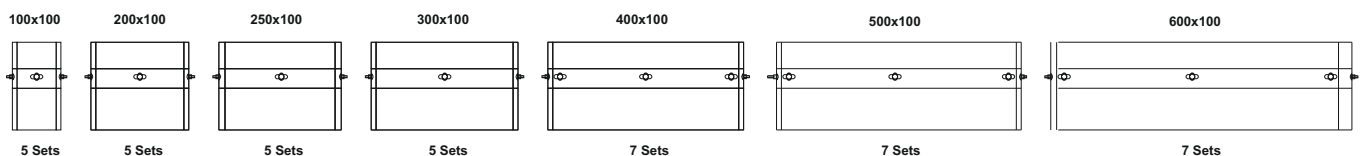
Thickn. (ga) [mm]: **0.6 | 0.8 | 1.0 | 1.2**

Width	Cross-Section
100	98 cm ²
150	148 cm ²
200	198 cm ²
300	298 cm ²
400	398 cm ²
500	498 cm ²
600	598 cm ²

Recommended Quantities of Bolt and Nut For Integrated Cable Tray Connections

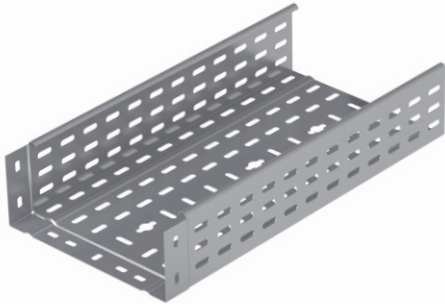
Width Of Cable Tray	W	H						
		40	50	60	75	80	85	100
50	2 Sets	2 Sets	2 Sets	—	—	—	—	
100	3 Sets	3 Sets	3 Sets	5 Sets	5 Sets	5 Sets	5 Sets	
150	3 Sets	3 Sets	3 Sets	5 Sets	5 Sets	5 Sets	5 Sets	
200	3 Sets	3 Sets	3 Sets	5 Sets	5 Sets	5 Sets	5 Sets	
250	3 Sets	3 Sets	3 Sets	5 Sets	5 Sets	5 Sets	5 Sets	
300	3 Sets	3 Sets	3 Sets	5 Sets	5 Sets	5 Sets	5 Sets	
400	5 Sets	5 Sets	5 Sets	7 Sets	7 Sets	7 Sets	7 Sets	
500	5 Sets	5 Sets	5 Sets	7 Sets	7 Sets	7 Sets	7 Sets	
600	5 Sets	5 Sets	5 Sets	7 Sets	7 Sets	7 Sets	7 Sets	

Recommended Quantities of Bolt and Nut For Integrated Cable Tray Connections



Integrated Perforated Cable Trays - Return Flanges

Geçmeli Tip Kablo Kanalı - Интегрированные Перфорированные лотки



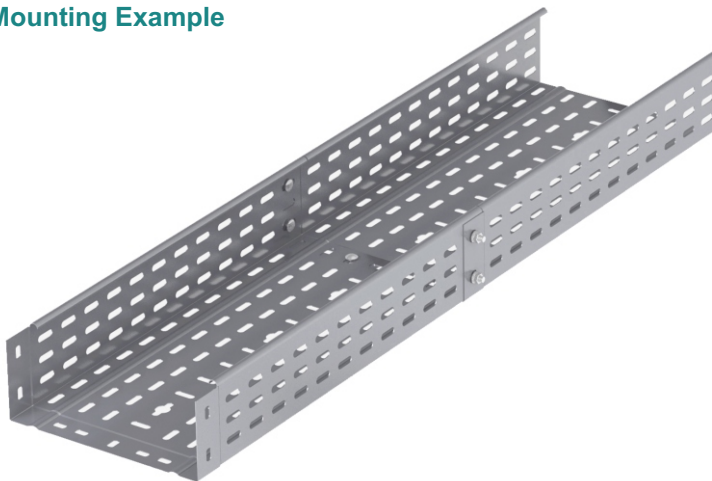
Pre - Galvanised

GPK ... H100					0.6mm
CODE	Width a mm	Length L mm	KG 1 mt	pcs	
GPK 110 06 PG	100	3000	1.20	2	
GPK 112 06 PG	125	3000	1.30	2	
GPK 115 06 PG	150	3000	1.39	2	
GPK 120 06 PG	200	3000	1.58	2	
					0.7mm
GPK 110 07 PG	100	3000	1.40	2	
GPK 112 07 PG	125	3000	1.51	2	
GPK 115 07 PG	150	3000	1.62	2	
GPK 120 07 PG	200	3000	1.84	2	
					0.8mm
GPK 110 08 PG	100	3000	1.60	2	
GPK 112 08 PG	125	3000	1.72	2	
GPK 115 08 PG	150	3000	1.85	2	
GPK 120 08 PG	200	3000	2.10	2	
GPK 122 08 PG	225	3000	2.22	2	
GPK 125 08 PG	250	3000	2.35	2	
GPK 130 08 PG	300	3000	2.60	2	

Important!
Joining cable tray sections together only use
Screw Sets CFS M6 or CFS M8

GPK ... H100					1.0mm
CODE	Width a mm	Length L mm	KG 1 mt	pcs	
GPK 110 10 PG	100	3000	1.99	2	
GPK 112 10 PG	125	3000	2.14	2	
GPK 115 10 PG	150	3000	2.30	2	
GPK 120 10 PG	200	3000	2.62	2	
GPK 122 10 PG	225	3000	2.78	2	
GPK 125 10 PG	250	3000	2.93	2	
GPK 130 10 PG	300	3000	3.25	2	
GPK 140 10 PG	400	3000	3.87	2	
					1.2mm
GPK 110 12 PG	100	3000	2.38	2	
GPK 112 12 PG	125	3000	2.58	2	
GPK 115 12 PG	150	3000	2.76	2	
GPK 120 12 PG	200	3000	3.14	2	
GPK 122 12 PG	225	3000	3.33	2	
GPK 125 12 PG	250	3000	3.51	2	
GPK 130 12 PG	300	3000	3.90	2	
GPK 140 12 PG	400	3000	4.65	2	
GPK 145 12 PG	450	3000	5.02	2	
GPK 150 12 PG	500	3000	5.40	2	
GPK 160 12 PG	600	3000	6.15	2	

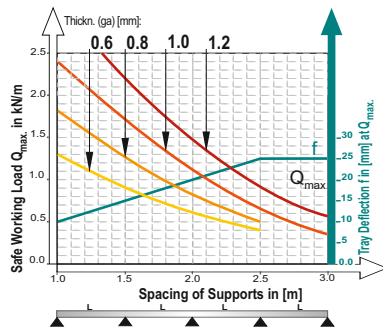
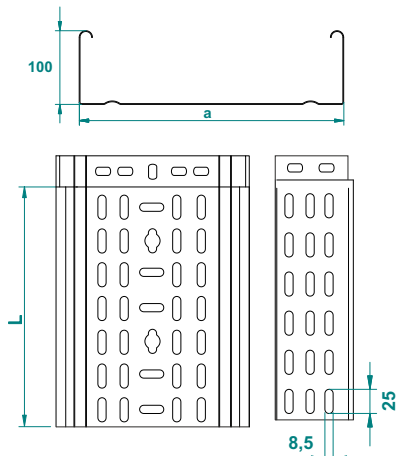
Mounting Example



Recommended Quantities of Bolt and Nut For Integrated Cable Tray Connections

Width Of Cable Tray	W	H	40	50	60	75	80	85	100
50	2 Sets	2 Sets	2 Sets	-	-	-	-	-	-
100	3 Sets	3 Sets	3 Sets	5 Sets	5 Sets	5 Sets	5 Sets	5 Sets	5 Sets
150	3 Sets	3 Sets	3 Sets	5 Sets	5 Sets	5 Sets	5 Sets	5 Sets	5 Sets
200	3 Sets	3 Sets	3 Sets	5 Sets	5 Sets	5 Sets	5 Sets	5 Sets	5 Sets
250	3 Sets	3 Sets	3 Sets	5 Sets	5 Sets	5 Sets	5 Sets	5 Sets	5 Sets
300	3 Sets	3 Sets	3 Sets	5 Sets	5 Sets	5 Sets	5 Sets	5 Sets	5 Sets
400	5 Sets	5 Sets	5 Sets	7 Sets	7 Sets	7 Sets	7 Sets	7 Sets	7 Sets
500	5 Sets	5 Sets	5 Sets	7 Sets	7 Sets	7 Sets	7 Sets	7 Sets	7 Sets
600	5 Sets	5 Sets	5 Sets	7 Sets	7 Sets	7 Sets	7 Sets	7 Sets	7 Sets

GPK H100



This diagram comply with IEC 61537 with connection to 1/5 of the span and the end span = 0,8x the span
 Q = max. admissible load (kg/m)
 L = support distance (m)
 f = Deflection (mm) / Max. deflection = L/100
 Safely co-efficient = 1.5

Width	Usable Cross-Section
100	98 cm ²
150	148 cm ²
200	198 cm ²
300	298 cm ²
400	398 cm ²
500	498 cm ²
600	598 cm ²

Available finishes:

- HDG-steel, hot-dip galv. to TS-EN ISO 1461:2011 (HDG)
- SS- stainless steel AISI 304L and AISI 316L (SS)
- EP- powder coating in a full range of colours (RAL)

Thickn. (ga) [mm]: 0.8 1.0 1.2 1.5

Integrated Perforated Cable Trays - Return Flanges

Geçmeli Tip Kablo Kanalı - Интегрированные Перфорированные лотки

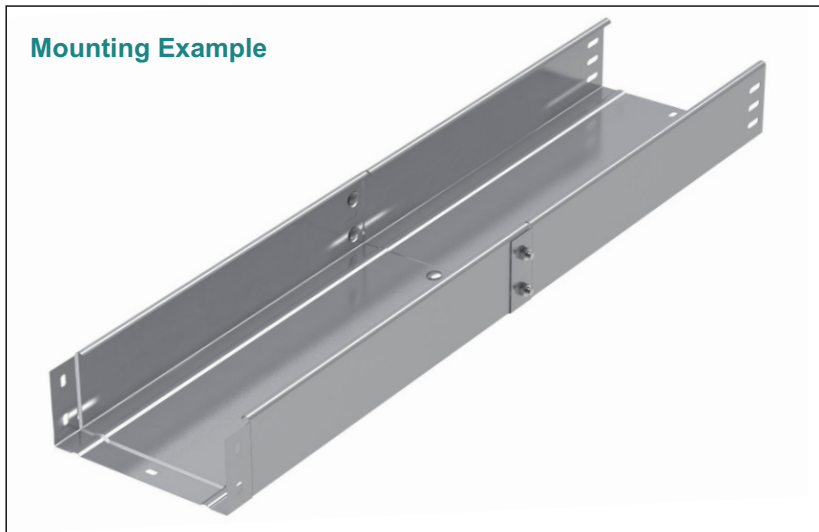


Pre - Galvanised

Important!
Joining cable tray sections together only use
Screw Sets CFS M6 or CFS M8

GDK ... H100					GDK ... H100				
0.6mm					1.0mm				
CODE	Width a mm	Length L mm	KG 1 mt	pcs	CODE	Width a mm	Length L mm	KG 1 mt	pcs
GDK 110 06 PG	100	3000	1.50	2	GDK 110 10 PG	100	3000	2.49	2
GDK 112 06 PG	125	3000	1.62	2	GDK 112 10 PG	125	3000	2.68	2
GDK 115 06 PG	150	3000	1.74	2	GDK 115 10 PG	150	3000	2.88	2
GDK 120 06 PG	200	3000	1.97	2	GDK 120 10 PG	200	3000	3.27	2
0.7mm					1.2mm				
GDK 110 07 PG	100	3000	1.75	2	GDK 110 12 PG	100	3000	2.89	2
GDK 112 07 PG	125	3000	1.89	2	GDK 112 12 PG	125	3000	3.22	2
GDK 115 07 PG	150	3000	2.03	2	GDK 115 12 PG	150	3000	3.45	2
GDK 120 07 PG	200	3000	2.30	2	GDK 120 12 PG	200	3000	3.92	2
0.8mm					1.2mm				
GDK 110 08 PG	100	3000	2.00	2	GDK 122 12 PG	225	3000	4.16	2
GDK 112 08 PG	125	3000	2.15	2	GDK 125 12 PG	250	3000	4.39	2
GDK 115 08 PG	150	3000	2.31	2	GDK 130 12 PG	300	3000	4.87	2
GDK 120 08 PG	200	3000	2.62	2	GDK 140 12 PG	400	3000	5.81	2
GDK 122 08 PG	225	3000	2.78	2	GDK 145 12 PG	450	3000	6.28	2
GDK 125 08 PG	250	3000	2.94	2	GDK 150 12 PG	500	3000	6.75	2
GDK 130 08 PG	300	3000	3.25	2	GDK 160 12 PG	600	3000	7.69	2

Mounting Example



Recommended Quantities of Bolt and Nut For Integrated Cable Tray Connections

Width	Height	40	50	60	75	80	85	100
50	100	2 Sets	2 Sets	2 Sets	-	-	-	-
100	100	3 Sets	3 Sets	3 Sets	5 Sets	5 Sets	5 Sets	5 Sets
150	100	3 Sets	3 Sets	3 Sets	5 Sets	5 Sets	5 Sets	5 Sets
200	100	3 Sets	3 Sets	3 Sets	5 Sets	5 Sets	5 Sets	5 Sets
250	100	3 Sets	3 Sets	3 Sets	5 Sets	5 Sets	5 Sets	5 Sets
300	100	3 Sets	3 Sets	3 Sets	5 Sets	5 Sets	5 Sets	5 Sets
400	100	5 Sets	5 Sets	5 Sets	7 Sets	7 Sets	7 Sets	7 Sets
500	100	5 Sets	5 Sets	5 Sets	7 Sets	7 Sets	7 Sets	7 Sets
600	100	5 Sets	5 Sets	5 Sets	7 Sets	7 Sets	7 Sets	7 Sets

5 Sets

5 Sets

5 Sets

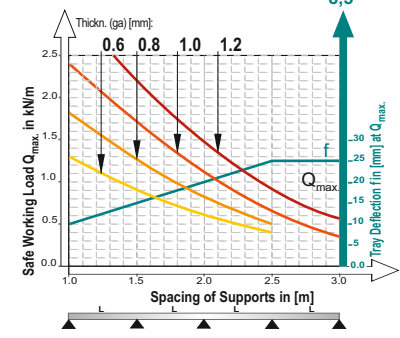
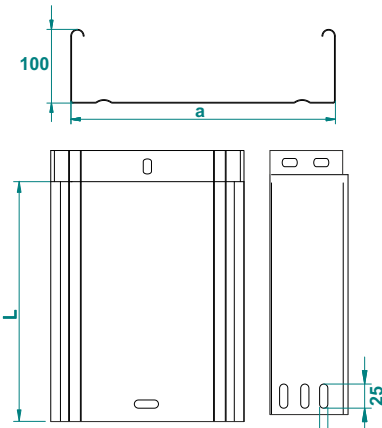
5 Sets

7 Sets

7 Sets

7 Sets

GDK H100



This diagram comply with IEC 61537 with connection to 1/5 of the span and the end span = 0,8x the span
 $Q = \text{max. admissible load (kg/m)}$
 $L = \text{support distance (m)}$
 $f = \text{Deflection (mm) / Max. deflection} = L/100$
 Safety co-efficient = 1.5



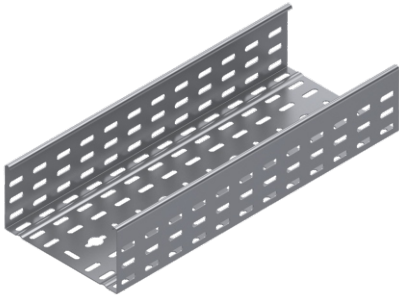
Width	Usable Cross-Section
100	98 cm ²
150	148 cm ²
200	198 cm ²
300	298 cm ²
400	398 cm ²
500	498 cm ²
600	598 cm ²

Available finishes:
 HDG-steel, hot-dip galv. to TS-EN ISO 1461:2011 (HDG)
 SS- stainless steel AISI 304L and AISI 316L (SS)
 EP- powder coating in a full range of colours (RAL)

Thickn. (ga) [mm]: 0.6 0.8 1.0 1.2 1.5

Perforated Cable Trays - Return Flanges

Ağır Hizmet Kablo Kanalı - Перфорированные лотки



Important!
Joining cable tray sections together only through the use of couplers 2 pcs for 1 Length
To install cable tray - straight use Screw Sets CFS M6 or CFS M8

Pre - Galvanised

APK ... H100					0.6mm	
CODE	Width a mm	Length L mm	KG 1 mt	pcs		
APK 110 06 PG	100	3000	1.20	2		
APK 112 06 PG	125	3000	1.30	2		
APK 115 06 PG	150	3000	1.39	2		
APK 120 06 PG	200	3000	1.58	2		
					0.8mm	
APK 110 08 PG	100	3000	1.60	2		
APK 112 08 PG	125	3000	1.72	2		
APK 115 08 PG	150	3000	1.85	2		
APK 120 08 PG	200	3000	2.10	2		
APK 122 08 PG	225	3000	2.22	2		
APK 125 08 PG	250	3000	2.35	2		
APK 130 08 PG	300	3000	2.60	2		
					1.0mm	
APK 110 10 PG	100	3000	1.99	2		
APK 112 10 PG	125	3000	2.14	2		
APK 115 10 PG	150	3000	2.30	2		
APK 120 10 PG	200	3000	2.62	2		
APK 122 10 PG	225	3000	2.78	2		
APK 125 10 PG	250	3000	2.93	2		
APK 130 10 PG	300	3000	3.25	2		
APK 140 10 PG	400	3000	3.87	2		

APK ... H100					1.2mm	
CODE	Width a mm	Length L mm	KG 1 mt	pcs		
APK 110 12 PG	100	3000	2.38	2		
APK 112 12 PG	125	3000	2.58	2		
APK 115 12 PG	150	3000	2.76	2		
APK 120 12 PG	200	3000	3.14	2		
APK 122 12 PG	225	3000	3.33	2		
APK 125 12 PG	250	3000	3.51	2		
APK 130 12 PG	300	3000	3.90	2		
APK 140 12 PG	400	3000	4.65	2		
APK 145 12 PG	450	3000	5.02	2		
APK 150 12 PG	500	3000	5.40	2		
APK 160 12 PG	600	3000	6.15	2		
					1.5mm	
APK 110 15 PG	100	3000	2.96	2		
APK 112 15 PG	125	3000	3.20	2		
APK 115 15 PG	150	3000	3.43	2		
APK 120 15 PG	200	3000	3.90	2		
APK 122 15 PG	225	3000	4.14	2		
APK 125 15 PG	250	3000	4.38	2		
APK 130 15 PG	300	3000	4.85	2		
APK 140 15 PG	400	3000	5.78	2		
APK 145 15 PG	450	3000	6.26	2		
APK 150 15 PG	500	3000	6.73	2		
APK 160 15 PG	600	3000	7.67	2		

Straight Connector (Coupler)

Birleştirme Elemanı - Прямой соединитель



Pre - Galvanised

KBE 2 ... H100					1.0mm	
CODE	Length L mm	KG 1 pc	pcs			
KBE 210 10 PG	175	0.14	100			
					1.2mm	
KBE 210 12 PG	175	0.14	100			

To Install one length ; use 2 pieces of KBE connector 8 sets of CFS bolts and nuts. (M6 or M8)

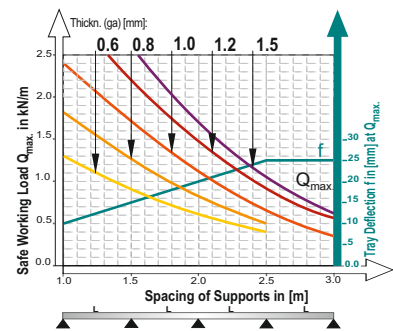
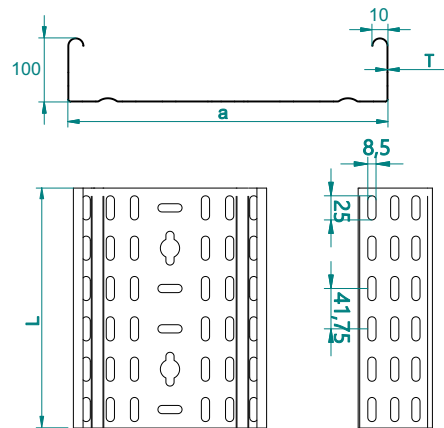
KBE 2 ... H100					1.5mm	
CODE	Length L mm	KG 1 pc	pcs			
KBE 210 15 PG	175	0.18	100			

Electro - Galvanized

CFS					M6	
CODE	Size mm	Length L mm	KG 1Set	pcs		
CFS M6 EG	M6	15	0,008	500		

CFS M8					M8	
CODE	Size mm	Length L mm	KG 1Set	pcs		
CFS M8 EG	M8	15	0,014	500		

APK H100

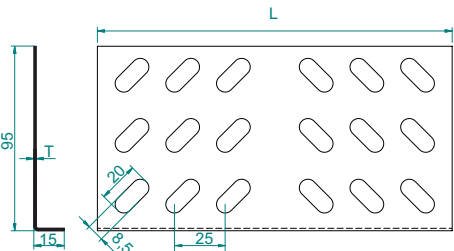


This diagram comply with IEC 61537 with connection to 1/5 of the span and the end span = 0,8x the span
Q = max. admissible load (kg/m)
L = support distance (m)
f = Deflection (mm) / Max. deflection = L/100
Safety co-efficient = 1.5

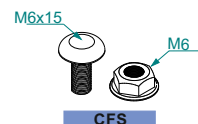
Width	Usable Cross-Sector
100	98 cm²
150	148 cm²
200	198 cm²
300	298 cm²
400	398 cm²
500	498 cm²
600	598 cm²



KBE2



M6x15 Round head squire neck bolt & M6 Flanged nut



APPLICATIONS

Cable routing

MATERIAL

Steel, strip-galv. acc. to the Sendzimir method to TS-EN 10346:2011 (PG)

Available finishes:

HDG-steel, hot-dip galv. to TS-EN ISO 1461:2011 (HDG)
SS- stainless steel AISI 304L and AISI 316L (SS)
EP- powder coating in a full range of colours (RAL)

Thickn. (ga) [mm]: **0.6 | 0.8 | 1.0 | 1.2 | 1.5**

Cable Tray Non - Perforated Type

Deliksiz Tip Kablo Kanalı - Сплошные лотки



Important!
Joining cable tray sections together only through the use of couplers 2 pcs for 1 Length
To install cable tray - straight use Screw Sets CFS M6 or CFS M8

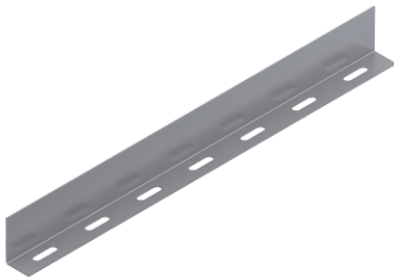
Pre - Galvanized

ADK ... H100		0.6mm	
CODE	Width a mm	Length L mm	kg 1 mt
ADK 110 06 PG	100	3000	1.50
ADK 112 06 PG	125	3000	1.62
ADK 115 06 PG	150	3000	1.74
ADK 120 06 PG	200	3000	1.97
ADK ... H100		0.8mm	
ADK 110 08 PG	100	3000	2.00
ADK 112 08 PG	125	3000	2.15
ADK 115 08 PG	150	3000	2.31
ADK 120 08 PG	200	3000	2.62
ADK 122 08 PG	225	3000	2.78
ADK 125 08 PG	250	3000	2.94
ADK 130 08 PG	300	3000	3.25
ADK ... H100		1.0mm	
ADK 110 10 PG	100	3000	2.49
ADK 112 10 PG	125	3000	2.68
ADK 115 10 PG	150	3000	2.88
ADK 120 10 PG	200	3000	3.27
ADK 122 10 PG	225	3000	3.47
ADK 125 10 PG	250	3000	3.66
ADK 130 10 PG	300	3000	4.06
ADK 140 10 PG	400	3000	4.84

ADK ... H100		1.2mm	
CODE	Width a mm	Length L mm	kg 1 mt
ADK 110 12 PG	100	3000	2.98
ADK 112 12 PG	125	3000	3.22
ADK 115 12 PG	150	3000	3.45
ADK 120 12 PG	200	3000	3.92
ADK 122 12 PG	225	3000	4.16
ADK 125 12 PG	250	3000	4.39
ADK 130 12 PG	300	3000	4.87
ADK 140 12 PG	400	3000	5.81
ADK 145 12 PG	450	3000	6.28
ADK 150 12 PG	500	3000	6.75
ADK 160 12 PG	600	3000	7.69
ADK ... H100		1.5mm	
ADK 110 15 PG	50	3000	3.70
ADK 112 15 PG	75	3000	4.00
ADK 115 15 PG	100	3000	4.29
ADK 120 15 PG	125	3000	4.88
ADK 122 15 PG	150	3000	5.17
ADK 125 15 PG	200	3000	5.47
ADK 130 15 PG	225	3000	6.06
ADK 140 15 PG	250	3000	7.23
ADK 145 15 PG	300	3000	7.82
ADK 150 15 PG	400	3000	8.41
ADK 160 15 PG	450	3000	9.59

Barrier Strip

Seperatör - Перегородка



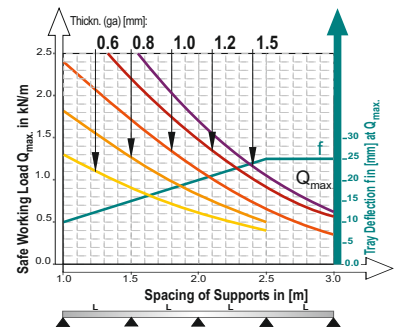
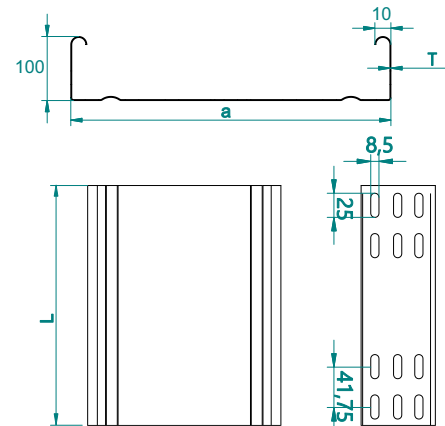
Important!
To install cable tray - bend use Screw Sets CFS M6 or CFS M8

Pre - Galvanized

SEP 1 ... H100		1.0mm	
CODE	Length L mm	kg 1m	pcs
SEP 110 10 PG	3000	0.90	1

SEP 1 ... H100		1.5mm	
CODE	Length L mm	kg 1m	pcs
SEP 110 15 PG	3000	1.35	1

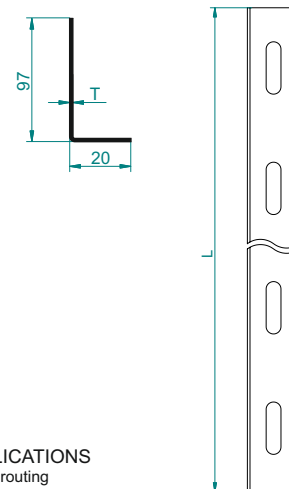
ADK H100



This diagram comply with IEC 61537 with connection to 1/5 of the span and the end span = 0,8x the span
Q = max. admissible load (kg/m)
L = support distance (m)
f = Deflection (mm) / Max. deflection = L/100
Safetyly co-efficient = 1.5

Width	Usable Cross-Section
100	98 cm ²
150	148 cm ²
200	198 cm ²
300	298 cm ²
400	398 cm ²
500	498 cm ²
600	598 cm ²

SEP 1 H100



APPLICATIONS
Cable routing

MATERIAL
Steel, strip-galv. acc. to the Sendzimir method to TS-EN 10346:2011 (PG)

Available finishes:
HDG-steel, hot-dip galv. to TS-EN ISO 1461:2011 (HDG)
SS- stainless steel AISI 304L and AISI 316L (SS)
EP- powder coating in a full range of colours (RAL)

Thickn. (ga) [mm]: **0.6 0.8 1.0 1.2 1.5**

90° Horizontal Bend of Cable Tray

90° Yatay Kanal Dönüş Elemanı - Угол горизонтальный 90°



Pre - Galvanized

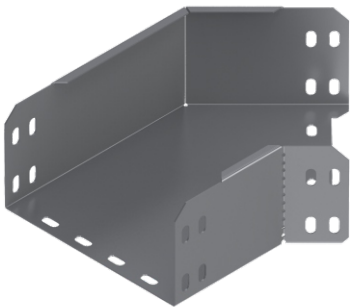
Important!
To install cable tray - bend use Screw Sets
CFS M6 or CFS M8

KA90 ... H100		0.8mm	
CODE	Width a=b mm	Kg 1m	pcs
KA90 110 08 PG	100	0.49	1
KA90 112 08 PG	125	0.57	1
KA90 115 08 PG	150	0.66	1
KA90 120 08 PG	200	0.84	1
		1.0mm	
KA90 110 10 PG	100	0.62	1
KA90 112 10 PG	125	0.72	1
KA90 115 10 PG	150	0.83	1
KA90 120 10 PG	200	1.06	1
KA90 122 10 PG	225	1.19	1
KA90 125 10 PG	250	1.33	1
KA90 130 10 PG	300	1.65	1
KA90 140 10 PG	400	2.32	1

KA90 ... H100		1.2mm	
CODE	Width a=b mm	Kg 1m	pcs
KA90 130 12 PG	300	2.06	1
KA90 140 12 PG	400	2.89	1
KA90 145 12 PG	450	3.36	1
KA90 150 12 PG	500	3.87	1
KA90 160 12 PG	600	4.99	1
		1.5mm	
KA90 110 15 PG	100	0.93	1
KA90 112 15 PG	125	1.08	1
KA90 115 15 PG	150	2.24	1
KA90 120 15 PG	200	1.60	1
KA90 122 15 PG	225	1.79	1
KA90 125 15 PG	250	1.99	1
KA90 130 15 PG	300	2.58	1
KA90 140 15 PG	400	3.62	1
KA90 145 15 PG	450	4.20	1
KA90 150 15 PG	500	4.84	1
KA90 160 15 PG	600	6.23	1

45° Horizontal Bend of Cable Tray

45° Yatay Kanal Dönüş Elemanı - Угол горизонтальный 45°



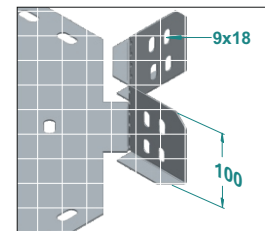
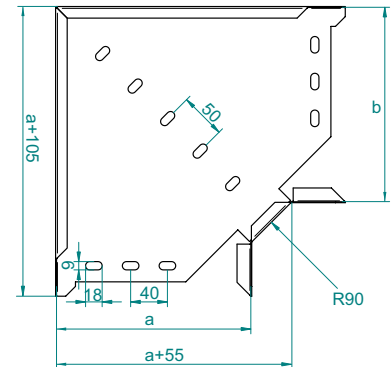
Pre - Galvanized

Important!
To install cable tray - bend use Screw Sets
CFS M6 or CFS M8

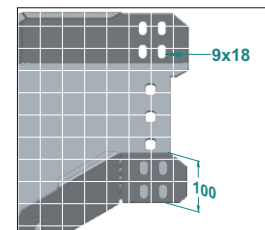
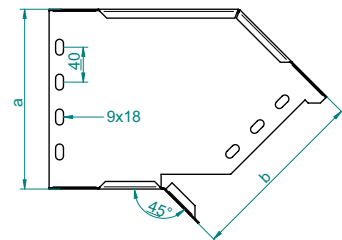
KA45 ... H100		0.8mm	
CODE	Width a=b mm	Kg 1m	pcs
KA45 110 10 PG	100	0.44	1
KA45 112 10 PG	125	0.56	1
KA45 115 10 PG	150	0.64	1
KA45 120 10 PG	200	0.83	1
		1.0mm	
KA45 110 10 PG	100	0.56	1
KA45 112 10 PG	125	0.70	1
KA45 115 10 PG	150	0.81	1
KA45 120 10 PG	200	1.04	1
KA45 122 10 PG	225	1.17	1
KA45 125 10 PG	250	1.30	1
KA45 130 10 PG	300	1.53	1
KA45 140 10 PG	400	2.18	1

KA45 ... H100		1.2mm	
CODE	Width a=b mm	Kg 1m	pcs
KA45 130 12 PG	300	1.91	1
KA45 140 12 PG	400	2.72	1
KA45 145 12 PG	450	3.17	1
KA45 150 12 PG	500	3.66	1
KA45 160 12 PG	600	4.75	1
		1.5mm	
KA45 110 15 PG	100	0.83	1
KA45 112 15 PG	125	1.05	1
KA45 115 15 PG	150	1.21	1
KA45 120 15 PG	200	1.56	1
KA45 122 15 PG	225	1.75	1
KA45 125 15 PG	250	1.95	1
KA45 130 15 PG	300	2.39	1
KA45 140 15 PG	400	3.39	1
KA45 145 15 PG	450	3.96	1
KA45 150 15 PG	500	4.58	1
KA45 160 15 PG	600	5.94	1

KA90 H100



KA45 H100



APPLICATIONS

Cable routing

MATERIAL

Steel, strip-galv. acc. to the Sendzimir method
to TS-EN 10346:2011 (PG)

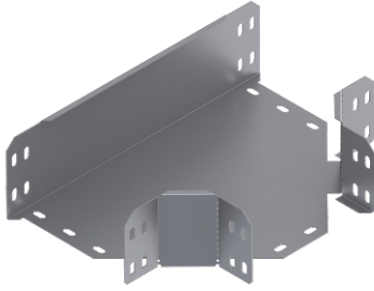
Available finishes:

HDG-steel, hot-dip galv. to TS-EN ISO 1461:2011 (HDG)
SS- stainless steel AISI 304L and AISI 316L (SS)
EP- powder coating in a full range of colours (RAL)

Thickn. (ga) [mm]: **0.6 | 0.8 | 1.0 | 1.2 | 1.5**

Tea Horizontal Bend of Cable Tray

"T" Yatay Kanal Dönüş Elemanı - T-отвод горизонтальный



Pre - Galvanized

KAT ... H100		0.8mm	
CODE	Width a=b=c mm	Kg 1pc	pcs
KAT 110 08 PG	100	0.68	1
KAT 112 08 PG	125	0.77	1
KAT 115 08 PG	150	0.87	1
KAT 120 08 PG	200	0.90	1
		1.0mm	
KAT 110 10 PG	100	0.85	1
KAT 112 10 PG	125	0.97	1
KAT 115 10 PG	150	1.09	1
KAT 120 10 PG	200	1.13	1
KAT 122 10 PG	225	1.36	1
KAT 125 10 PG	250	1.66	1
KAT 130 10 PG	300	2.10	1
KAT 140 10 PG	400	2.84	1

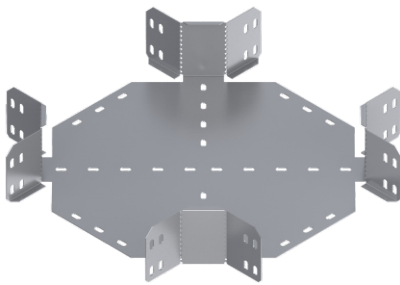
Important!

To install cable tray - bend use Screw Sets
CFS M6 or CFS M8

KAT ... H100		1.2mm	
CODE	Width a=b=c mm	Kg 1pc	pcs
KAT 130 12 PG	300	2.61	1
KAT 140 12 PG	400	3.55	1
KAT 145 12 PG	450	4.07	1
KAT 150 12 PG	500	4.63	1
KAT 160 12 PG	600	5.85	1
		1.5mm	
KAT 110 15 PG	100	1.28	1
KAT 112 15 PG	125	1.45	1
KAT 115 15 PG	150	1.64	1
KAT 120 15 PG	200	2.05	1
KAT 122 15 PG	225	2.27	1
KAT 125 15 PG	250	2.50	1
KAT 130 15 PG	300	3.27	1
KAT 140 15 PG	400	4.44	1
KAT 145 15 PG	450	5.09	1
KAT 150 15 PG	500	5.78	1
KAT 160 15 PG	600	7.31	1

Cross Bend of Cable Tray

4'lü Bağlantı Elemanı- Крестовина



Pre - Galvanized

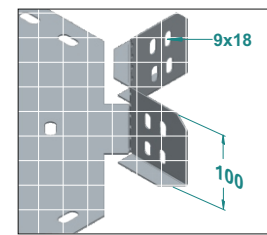
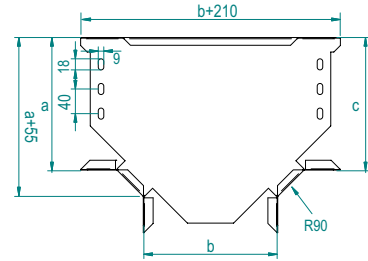
KAD ... H100		0.8mm	
CODE	Width a=b=c=d mm	Kg 1pc	pcs
KAD 110 08 PG	100	0.93	1
KAD 112 08 PG	125	1.04	1
KAD 115 08 PG	150	1.15	1
KAD 120 08 PG	200	1.52	1
		1.0mm	
KAD 110 10 PG	100	1.17	1
KAD 112 10 PG	125	1.30	1
KAD 115 10 PG	150	1.44	1
KAD 120 10 PG	200	1.75	1
KAD 122 10 PG	225	1.91	1
KAD 125 10 PG	250	2.08	1
KAD 130 10 PG	300	2.66	1
KAD 140 10 PG	400	3.48	1

Important!

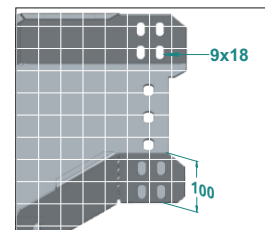
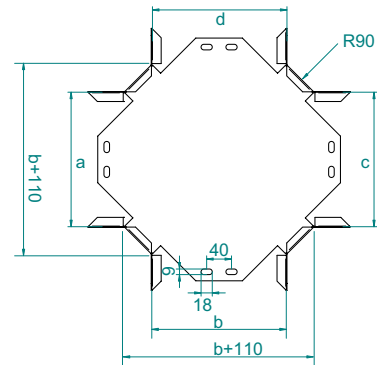
To install cable tray - bend use Screw Sets
CFS M6 or CFS M8

KAD ... H100		1.2mm	
CODE	Width a=b=c=d mm	Kg 1pc	pcs
KAD 130 12 PG	300	3.32	1
KAD 140 12 PG	400	4.35	1
KAD 145 12 PG	450	4.93	1
KAD 150 12 PG	500	5.53	1
KAD 160 12 PG	600	6.85	1
		1.5mm	
KAD 110 15 PG	100	1.75	1
KAD 112 15 PG	125	1.95	1
KAD 115 15 PG	150	2.16	1
KAD 120 15 PG	200	2.62	1
KAD 122 15 PG	225	2.87	1
KAD 125 15 PG	250	3.13	1
KAD 130 15 PG	300	4.14	1
KAD 140 15 PG	400	5.44	1
KAD 145 15 PG	450	6.16	1
KAD 150 15 PG	500	6.92	1
KAD 160 15 PG	600	8.57	1

KAT H100



KAD H100



APPLICATIONS

Cable routing

MATERIAL

Steel, strip-galv. acc. to the Sendzimir method
to TS-EN 10346:2011 (PG)

Available finishes:

HDG-steel, hot-dip galv. to TS-EN ISO 1461:2011 (HDG)
SS- stainless steel AISI 304L and AISI 316L (SS)
EP- powder coating in a full range of colours (RAL)

Thickn. (ga) [mm]:

0.6 0.8 1.0 1.2 1.5

Vertical Outside Bend of Cable Tray (Flexible)

Kanal Dış Bükü - Арка универсальная, внешний изгиб



Pre - Galvanized

KADB ... H100					0.8mm
CODE	Width a mm	Length L mm	KG 1m	pcs	
KADB 110 08 PG	100	600	0.93	1	
KADB 112 08 PG	125	600	1.00	1	
KADB 115 08 PG	150	600	1.08	1	
KADB 120 08 PG	200	600	1.23	1	
					1.0mm
KADB 110 10 PG	100	600	1.17	1	
KADB 112 10 PG	125	600	1.26	1	
KADB 115 10 PG	150	600	1.35	1	
KADB 120 10 PG	200	600	1.54	1	
KADB 122 10 PG	225	600	1.63	1	
KADB 125 10 PG	250	600	1.72	1	
KADB 130 10 PG	300	600	1.82	1	
KADB 140 10 PG	400	600	2.62	1	

Important!

To install vertical bend - use 2 pieces of KBE con. and 4 sets of CFS bolts and nuts (M6 or M8).

KADB ... H100					1.2mm
CODE	Width a mm	Length L mm	KG 1m	pcs	
KADB 130 12 PG	300	600	2.28	1	
KADB 140 12 PG	400	600	3.27	1	
KADB 145 12 PG	450	600	3.53	1	
KADB 150 12 PG	500	600	3.80	1	
KADB 160 12 PG	600	600	4.33	1	
					1.5mm
KADB 110 15 PG	100	600	1.74	1	
KADB 112 15 PG	125	600	1.88	1	
KADB 115 15 PG	150	600	2.01	1	
KADB 120 15 PG	200	600	2.29	1	
KADB 122 15 PG	225	600	2.43	1	
KADB 125 15 PG	250	600	2.57	1	
KADB 130 15 PG	300	600	2.84	1	
KADB 140 15 PG	400	600	4.07	1	
KADB 145 15 PG	450	600	4.40	1	
KADB 150 15 PG	500	600	4.73	1	
KADB 160 15 PG	600	600	5.39	1	

Vertical Inside Bend of Cable Tray (Flexible)

Kanal İç Bükü - Арка универсальная, внутренний изгиб



Pre - Galvanized

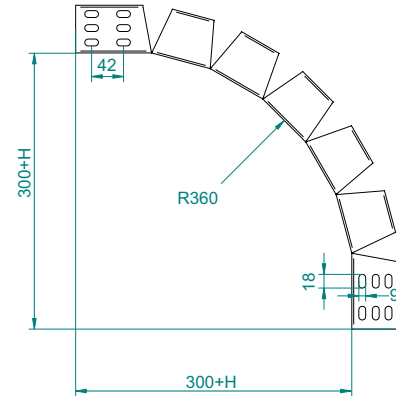
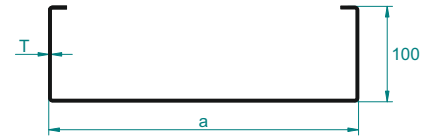
KAIB ... H100					0.8mm
CODE	Width a mm	Length L mm	KG 1m	pcs	
KAIB 110 08 PG	100	600	0.93	1	
KAIB 112 08 PG	125	600	1.00	1	
KAIB 115 08 PG	150	600	1.08	1	
KAIB 120 08 PG	200	600	1.23	1	
					1.0mm
KAIB 110 10 PG	100	600	1.17	1	
KAIB 112 10 PG	125	600	1.26	1	
KAIB 115 10 PG	150	600	1.35	1	
KAIB 120 10 PG	200	600	1.54	1	
KAIB 122 10 PG	225	600	1.63	1	
KAIB 125 10 PG	250	600	1.72	1	
KAIB 130 10 PG	300	600	1.82	1	
KAIB 140 10 PG	400	600	2.62	1	

Important!

To install vertical bend - use 2 pieces of KBE con. and 4 sets of CFS bolts and nuts (M6 or M8).

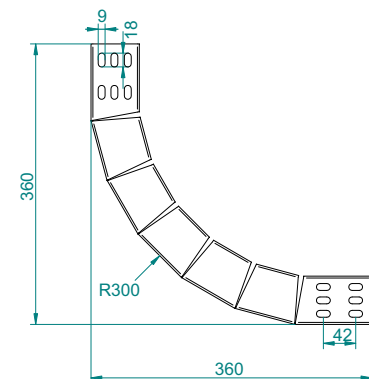
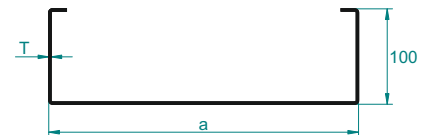
KAIB ... H100					1.2mm
CODE	Width a mm	Length L mm	KG 1m	pcs	
KAIB 130 12 PG	300	600	2.28	1	
KAIB 140 12 PG	400	600	3.27	1	
KAIB 145 12 PG	450	600	3.53	1	
KAIB 150 12 PG	500	600	3.80	1	
KAIB 160 12 PG	600	600	4.33	1	
					1.5mm
KAIB 110 15 PG	100	600	1.74	1	
KAIB 112 15 PG	125	600	1.88	1	
KAIB 115 15 PG	150	600	2.01	1	
KAIB 120 15 PG	200	600	2.29	1	
KAIB 122 15 PG	225	600	2.43	1	
KAIB 125 15 PG	250	600	2.57	1	
KAIB 130 15 PG	300	600	2.84	1	
KAIB 140 15 PG	400	600	4.07	1	
KAIB 145 15 PG	450	600	4.40	1	
KAIB 150 15 PG	500	600	4.73	1	
KAIB 160 15 PG	600	600	5.39	1	

KADB H100



KADB and KAIB are the same items, shipped flat. To install - Bend manually during application. in Flat Length = 600mm

KAIB H100



KADB and KAIB are the same items, shipped flat. To install - Bend manually during application. in Flat Length = 600mm

APPLICATIONS

Cable routing

MATERIAL

Steel, strip-galv. acc. to the Sendzimir method to TS-EN 10346:2011 (PG)

Available finishes:

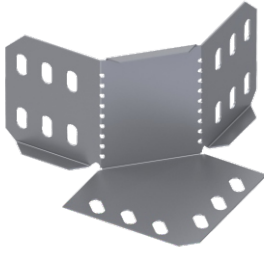
HDG-steel, hot-dip galv. to TS-EN ISO 1461:2011 (HDG)
SS- stainless steel AISI 304L and AISI 316L (SS)
EP- powder coating in a full range of colours (RAL)

Thickn. (ga) [mm]:

0.6 | 0.8 | 1.0 | 1.2 | 1.5

Add on 90° Horizontal Corner Bend

90° Köşe yatay kanal dönüs eki - Угол 90° врезной



Pre - Galvanized

KA90E ... H100		0.8mm		kg 1pc	pcs
CODE	a mm	Radius R mm			
KA90E 1 08 PG	55	90	0.16	1	1
KA90ER1 08 10 PG	90	150	0.24	1	1
KA90ER2 08 10 PG	180	300	0.47	1	1
		1.0mm			
KA90E 1 10 PG	55	90	0.20	1	1
KA90ER1 10 10 PG	90	150	0.30	1	1
KA90ER2 10 10 PG	180	300	0.59	1	1

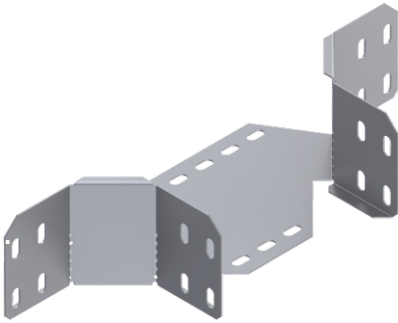
Important!

To install cable tray - bend use Screw Sets CFS M6 or CFS M8

KA90E ... H100		1.5mm		kg 1pc	pcs
CODE	a mm	Radius R mm			
KA90E 1 15 PG	55	90	0.31	1	1
KA90ER1 10 15 PG	90	150	0.45	1	1
KA90ER2 10 15 PG	180	300	0.88	1	1

Add on tee horizontal bend

T yatay kanal dönüs eki - Т-отвод горизонтальный врезной



Pre - Galvanized

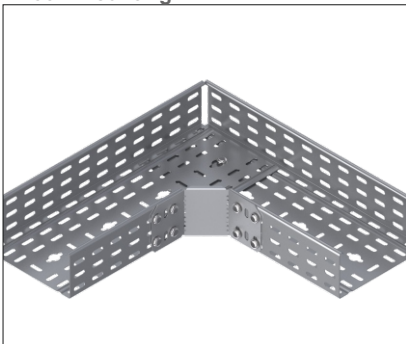
KATE... H100		0.8mm		kg 1m	pcs
CODE	Width a mm	Radius R mm			
KATE 110 10 PG	100	90	0.40	1	1
KATE 112 10 PG	125	90	0.43	1	1
KATE 115 10 PG	150	90	0.45	1	1
KATE 120 10 PG	200	90	0.50	1	1
		1.0mm			
KATE 110 10 PG	100	90	0.51	1	1
KATE 112 10 PG	125	90	0.54	1	1
KATE 115 10 PG	150	90	0.57	1	1
KATE 120 10 PG	200	90	0.63	1	1
KATE 122 10 PG	225	90	0.66	1	1
KATE 125 10 PG	250	90	0.69	1	1
KATE 130 10 PG	300	90	0.73	1	1
KATE 140 10 PG	400	90	0.84	1	1

Important!

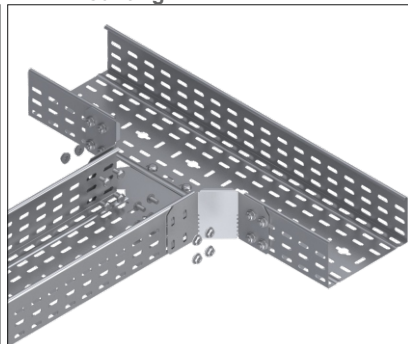
To install cable tray - bend use Screw Sets CFS M6 or CFS M8

KATE... H100		1.2mm		kg 1m	pcs
CODE	Width a mm	Radius R mm			
KATE 130 12 PG	300	90	0.91	1	1
KATE 140 12 PG	400	90	1.05	1	1
KATE 145 12 PG	450	90	1.13	1	1
KATE 150 12 PG	500	90	1.20	1	1
KATE 160 12 PG	600	90	1.35	1	1
		1.5mm			
KATER1 110 15 PG	100	150	1.31	1	1
KATER1 112 15 PG	125	150	1.38	1	1
KATER1 115 15 PG	150	150	1.45	1	1
KATER1 120 15 PG	200	150	1.59	1	1
KATER1 122 15 PG	225	150	1.66	1	1
KATER1 125 15 PG	250	150	1.72	1	1
KATER1 130 15 PG	300	150	1.86	1	1
KATER1 140 15 PG	400	150	2.14	1	1
KATER1 145 15 PG	450	150	2.27	1	1
KATER1 150 15 PG	500	150	2.41	1	1
KATER1 160 15 PG	600	150	2.68	1	1

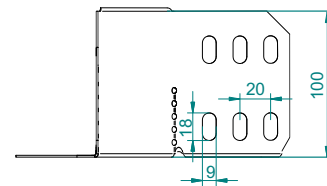
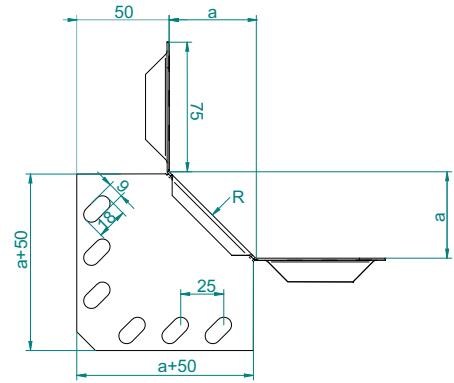
KA90E Mounting



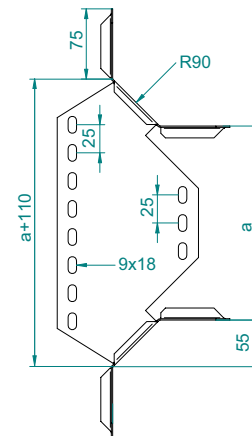
KATE Mounting



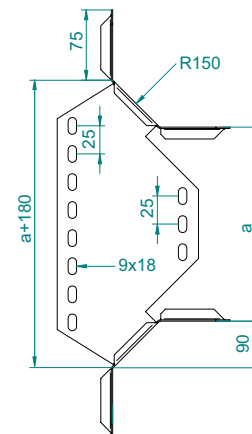
KA90E H100



KATE



KATER1



APPLICATIONS

Cable routing

MATERIAL

Steel, strip-galv. acc. to the Sendzimir method to TS-EN 10346:2011 (PG)

Available finishes:

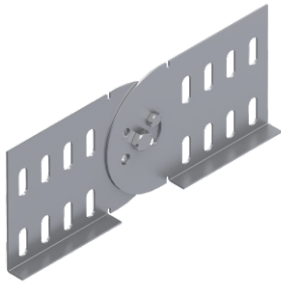
HDG-steel, hot-dip galv. to TS-EN ISO 1461:2011 (HDG)
SS- stainless steel AISI 304L and AISI 316L (SS)
EP- powder coating in a full range of colours (RAL)

Thickn. (ga) [mm]:

0.6 0.8 1.0 1.2 1.5

Adjustable Vertical Connector (2 Pcs)

Dikey Seviye Degistirme Eki (2 Adet) - Шарнирный соединитель для лотка

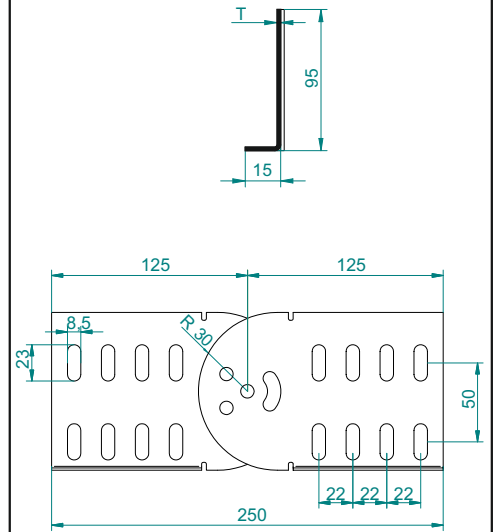


Pre - Galvanized

Important!
To install cable tray - bend use Screw Sets
CFS M6 or CFS M8

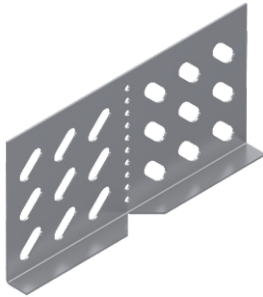
BDD 2 ... H100				BDD 2 ... H100			
1.2mm				1.5mm			
CODE	Length L mm	KG 1m	pcs	CODE	Length L mm	KG 1m	pcs
BDD 210 12 PG	250	0.26	1	BDD 210 15 PG	250	0.33	1

BDD 2 H100



Adjustable Horizontal Connector

Yatay Seviye Degistirme Eki - Угловой соединитель

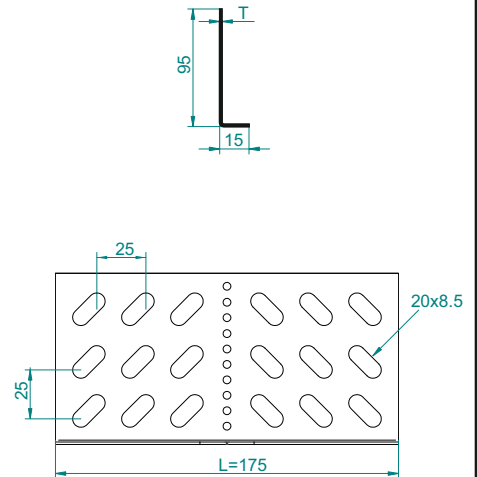


Pre - Galvanized

Important!
To install cable tray - bend use Screw Sets
CFS M6 or CFS M8

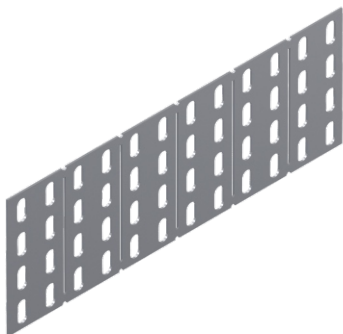
BYD 2 ... H100				BYD 2 ... H100			
1.2mm				1.5mm			
CODE	Length L mm	KG 1m	pcs	CODE	Length L mm	KG 1m	pcs
BYD 210 12 PG	175	0.14	1	BYD 210 15 PG	175	0.18	1

BYD 2 H100



Adjustable horizontal connector - Long Type

Yatay seviye degistirme eki uzun tip - Угловой соединитель - длинный

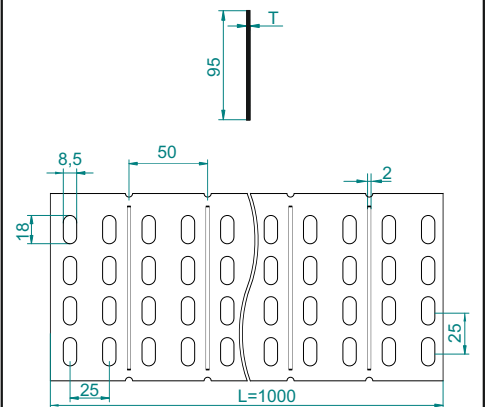


Pre - Galvanized

Important!
To install cable tray - bend use Screw Sets
CFS M6 or CFS M8

BYDU 1 ... H100				BYDU 1 ... H100			
1.2mm				1.5mm			
CODE	Length L mm	KG 1m	pcs	CODE	Length L mm	KG 1m	pcs
BYDU 110 12 PG	1000	0.71	1	BYDU 110 15 PG	1000	0.89	1

BYDU 1



APPLICATIONS

Cable routing

MATERIAL

Steel, strip-galv. acc. to the Sendzimir method to TS-EN 10346:2011 (PG)

Available finishes:

HDG-steel, hot-dip galv. to TS-EN ISO 1461:2011 (HDG)
SS- stainless steel AISI 304L and AISI 316L (SS)
EP- powder coating in a full range of colours (RAL)

Thickn. (ga) [mm]:

0.6 0.8 1.0 1.2 1.5