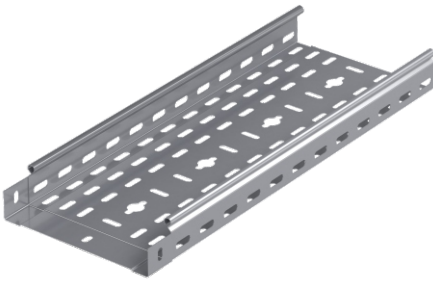


## Integrated Perforated Cable Trays - Return Flanges

Geçmeli Tip Kablo Kanalı - Интегрированные Перфорированные лотки



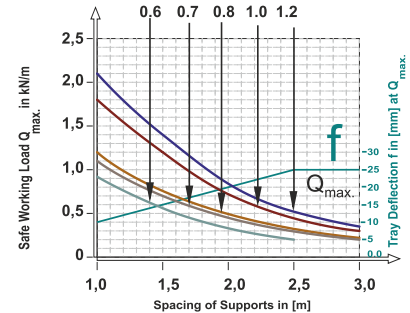
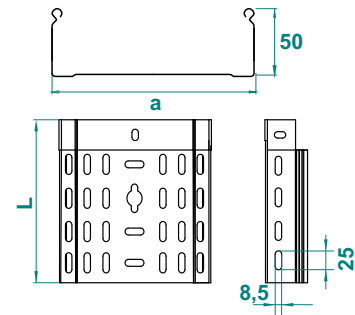
Important!  
Joining cable tray sections together only use  
Screw Sets CFS M6 or CFS M8

### Pre - Galvanised

FPK ... H50		0.6mm			
CODE	Width a mm	Length L mm	KG 1 pc	pcs	
FPK 505 06 PG	50	3000	0.64	2	
FPK 507 06 PG	75	3000	0.73	2	
FPK 510 06 PG	100	3000	0.82	2	
FPK 512 06 PG	125	3000	0.92	2	
FPK 515 06 PG	150	3000	1.02	2	
FPK 520 06 PG	200	3000	1.20	2	
FPK ... H50		0.7mm			
FPK 505 07 PG	50	3000	0.80	2	
FPK 507 07 PG	75	3000	0.91	2	
FPK 510 07 PG	100	3000	1.02	2	
FPK 512 07 PG	125	3000	1.14	2	
FPK 515 07 PG	150	3000	1.26	2	
FPK 520 07 PG	200	3000	1.49	2	
FPK ... H50		0.8mm			
FPK 505 08 PG	50	3000	0.84	2	
FPK 507 08 PG	75	3000	0.97	2	
FPK 510 08 PG	100	3000	1.10	2	
FPK 512 08 PG	125	3000	1.22	2	
FPK 515 08 PG	150	3000	1.34	2	
FPK 520 08 PG	200	3000	1.60	2	
FPK 522 08 PG	225	3000	1.72	2	
FPK 525 08 PG	250	3000	1.85	2	
FPK 530 08 PG	300	3000	2.10	2	

FPK ... H50		1.0mm			
CODE	Width a mm	Length L mm	KG 1 pc	pcs	
FPK 505 10 PG	50	3000	1.05	2	
FPK 507 10 PG	75	3000	1.20	2	
FPK 510 10 PG	100	3000	1.36	2	
FPK 512 10 PG	125	3000	1.52	2	
FPK 515 10 PG	150	3000	1.67	2	
FPK 520 10 PG	200	3000	1.99	2	
FPK 522 10 PG	225	3000	2.14	2	
FPK 525 10 PG	250	3000	2.30	2	
FPK 530 10 PG	300	3000	2.62	2	
FPK 540 10 PG	400	3000	3.25	2	
FPK 545 10 PG	450	3000	3.41	2	
FPK 550 10 PG	500	3000	3.72	2	
FPK 560 10 PG	600	3000	4.32	2	
FPK ... H50		1.2mm			
FPK 545 12 PG	450	3000	4.27	2	
FPK 550 12 PG	500	3000	4.65	2	
FPK 560 12 PG	600	3000	5.40	2	
FPK ... H50		0.5mm			
FPK 505 05 PG	50	3000	0.52	2	
FPK 510 05 PG	100	3000	0.68	2	

### FPK H50



Width	Usable Cross-Section
50	23 cm <sup>2</sup>
100	48 cm <sup>2</sup>
150	73 cm <sup>2</sup>
200	98 cm <sup>2</sup>
300	148 cm <sup>2</sup>
400	198 cm <sup>2</sup>
500	248 cm <sup>2</sup>
600	298 cm <sup>2</sup>

This diagram comply with IEC 61537 with connection to 1/5 of the span and the end span = 0,8x the span  
 $Q = \text{max. admissible load (kg/m)}$   
 $L = \text{support distance (m)}$   
 $f = \text{Deflection (mm) / Max. deflection} = L/100$   
 Safety co-efficient = 1.5

### APPLICATIONS

Cable routing

### MATERIAL

Steel, strip-galv. acc. to the Sendzimir method to TS-EN 10346:2011 (PG)

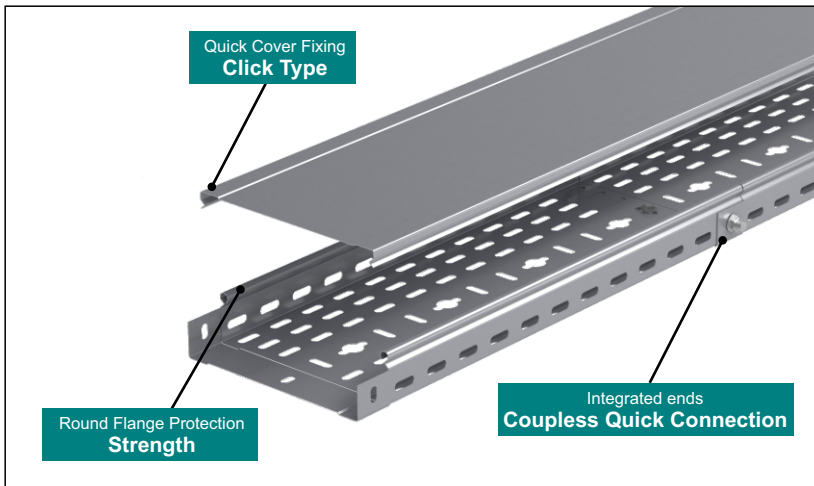
Available finishes:

HDG-steel, hot-dip galv. to TS-EN ISO 1461:2011 (HDG)

SS- stainless steel AISI 304L and AISI 316L (SS)

EP- powder coating in a full range of colours (RAL)

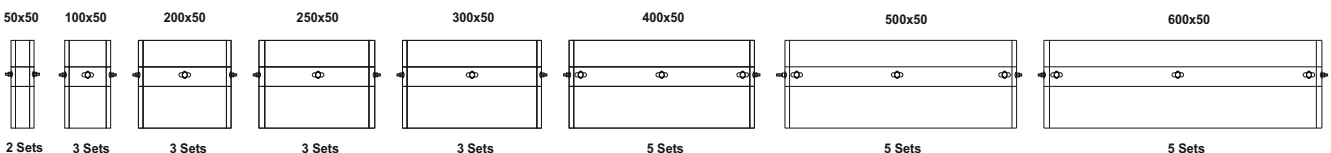
Thickn. (ga) [mm]: **0.6 | 0.8 | 1.0 | 1.2**



### Recommended Quantities of Bolt and Nut For Integrated Cable Tray Connections

W	H	Width of Cable Tray						
		40	50	60	75	80	85	100
50	2 Sets	2 Sets	2 Sets	2 Sets	-	-	-	-
100	3 Sets	3 Sets	3 Sets	3 Sets	5 Sets	5 Sets	5 Sets	5 Sets
150	3 Sets	3 Sets	3 Sets	3 Sets	5 Sets	5 Sets	5 Sets	5 Sets
200	3 Sets	3 Sets	3 Sets	3 Sets	5 Sets	5 Sets	5 Sets	5 Sets
250	3 Sets	3 Sets	3 Sets	3 Sets	5 Sets	5 Sets	5 Sets	5 Sets
300	3 Sets	3 Sets	3 Sets	3 Sets	5 Sets	5 Sets	5 Sets	5 Sets
400	5 Sets	5 Sets	5 Sets	5 Sets	7 Sets	7 Sets	7 Sets	7 Sets
500	5 Sets	5 Sets	5 Sets	5 Sets	7 Sets	7 Sets	7 Sets	7 Sets
600	5 Sets	5 Sets	5 Sets	5 Sets	7 Sets	7 Sets	7 Sets	7 Sets

### Recommended Quantities of Bolt and Nut For Integrated Cable Tray Connections



## Integrated Perforated Cable Trays - Return Flanges

Geçmeli Tip Kablo Kanalı - Интегрированные Перфорированные лотки

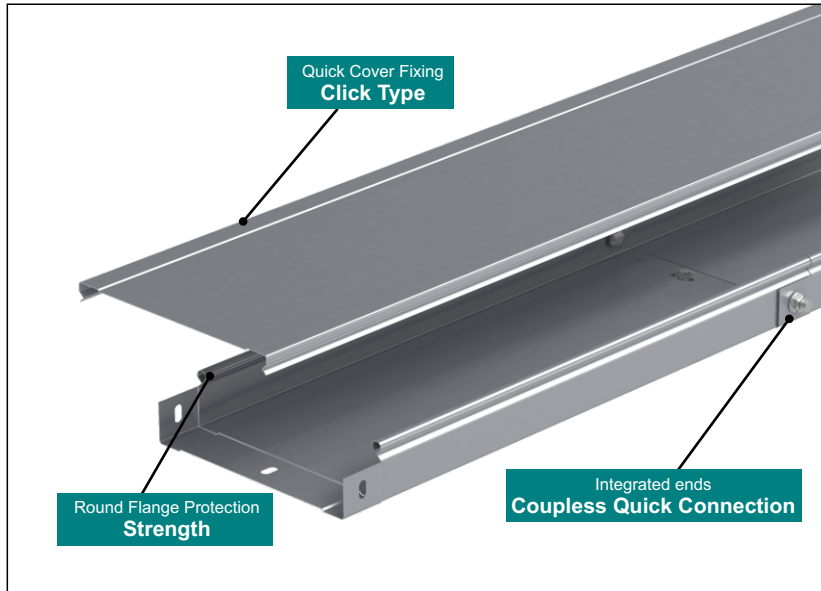


Important!  
Joining cable tray sections together only use  
Screw Sets CFS M6 or CFS M8

### Pre - Galvanised

FDK ... H50		0.6mm	
CODE	Width a mm	Length L mm	kg / pcs
FDK 505 06 PG	50	3000	0.80 2
FDK 507 06 PG	75	3000	0.91 2
FDK 510 06 PG	100	3000	1.03 2
FDK 512 06 PG	125	3000	1.15 2
FDK 515 06 PG	150	3000	1.27 2
FDK 520 06 PG	200	3000	1.50 2
FDK ... H50		0.7mm	
FDK 505 07 PG	50	3000	0.93 2
FDK 507 07 PG	75	3000	1.07 2
FDK 510 07 PG	100	3000	1.20 2
FDK 512 07 PG	125	3000	1.34 2
FDK 515 07 PG	150	3000	1.48 2
FDK 520 07 PG	200	3000	1.75 2
FDK ... H50		0.8mm	
FDK 505 08 PG	50	3000	1.05 2
FDK 507 08 PG	75	3000	1.21 2
FDK 510 08 PG	100	3000	1.37 2
FDK 512 08 PG	125	3000	1.52 2
FDK 515 08 PG	150	3000	1.68 2
FDK 520 08 PG	200	3000	2.00 2
FDK 522 08 PG	225	3000	2.15 2
FDK 525 08 PG	250	3000	2.31 2
FDK 530 08 PG	300	3000	2.62 2

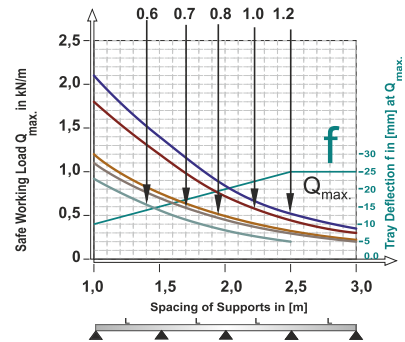
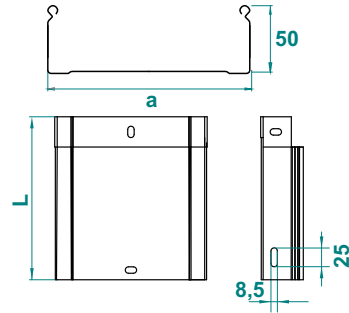
FDK ... H50		1.0mm	
CODE	Width a mm	Length L mm	kg / pcs
FDK 505 10 PG	50	3000	1.31 2
FDK 507 10 PG	75	3000	1.50 2
FDK 510 10 PG	100	3000	1.70 2
FDK 512 10 PG	125	3000	1.90 2
FDK 515 10 PG	150	3000	2.09 2
FDK 520 10 PG	200	3000	2.49 2
FDK 522 10 PG	225	3000	2.68 2
FDK 525 10 PG	250	3000	2.88 2
FDK 530 10 PG	300	3000	3.27 2
FDK 540 10 PG	400	3000	4.06 2
FDK 545 10 PG	450	3000	4.27 2
FDK 550 10 PG	500	3000	4.64 2
FDK 560 10 PG	600	3000	5.40 2
FDK ... H50		1.2mm	
FDK 545 12 PG	450	3000	5.34 2
FDK 550 12 PG	500	3000	5.81 2
FDK 560 12 PG	600	3000	6.75 2
FDK ... H50		0.5mm	
FDK 505 05 PG	50	3000	0.65 2
FDK 510 05 PG	100	3000	0.85 2



### Recommended Quantities of Bolt and Nut For Integrated Cable Tray Connections

Width	50x50	100x50	200x50	250x50	300x50	400x50	500x50	600x50
50	2 Sets	3 Sets	3 Sets	3 Sets	3 Sets	5 Sets	5 Sets	5 Sets
100	3 Sets	3 Sets	3 Sets	3 Sets	3 Sets	5 Sets	5 Sets	5 Sets
150	3 Sets	3 Sets	3 Sets	3 Sets	3 Sets	5 Sets	5 Sets	5 Sets
200	3 Sets	3 Sets	3 Sets	3 Sets	3 Sets	5 Sets	5 Sets	5 Sets
250	3 Sets	3 Sets	3 Sets	3 Sets	3 Sets	5 Sets	5 Sets	5 Sets
300	3 Sets	3 Sets	3 Sets	3 Sets	3 Sets	5 Sets	5 Sets	5 Sets
400	5 Sets	5 Sets	5 Sets	5 Sets	5 Sets	7 Sets	7 Sets	7 Sets
500	5 Sets	5 Sets	5 Sets	5 Sets	5 Sets	7 Sets	7 Sets	7 Sets
600	5 Sets	5 Sets	5 Sets	5 Sets	5 Sets	7 Sets	7 Sets	7 Sets

### FPK H50



Width	Usable Cross-Section
50	23 cm <sup>2</sup>
100	48 cm <sup>2</sup>
150	73 cm <sup>2</sup>
200	98 cm <sup>2</sup>
300	148 cm <sup>2</sup>
400	198 cm <sup>2</sup>
500	248 cm <sup>2</sup>
600	298 cm <sup>2</sup>

This diagram comply with IEC 61537 with connection to 1/5 of the span and the end span = 0,8x the span  
 $Q$  = max. admissible load (kg/m)  
 $L$  = support distance (m)  
 $f$  = Deflection (mm) / Max. deflection =  $L/100$   
 Safety co-efficient = 1.5

### APPLICATIONS

Cable routing

### MATERIAL

Steel, strip-galv. acc. to the Sendzimir method to TS-EN 10346:2011 (PG)

Available finishes:

HDG-steel, hot-dip galv. to TS-EN ISO 1461:2011 (HDG)

SS- stainless steel AISI 304L and AISI 316L (SS)

EP- powder coating in a full range of colours (RAL)

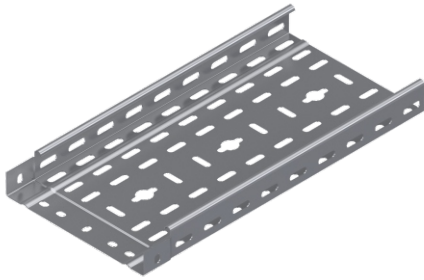
Thickn. (ga) [mm]: **0.6 | 0.8 | 1.0 | 1.2**

### Recommended Quantities of Bolt and Nut For Integrated Cable Tray Connections

W	H	40	50	60	75	80	85	100
Width Of Cable Tray	50	2 Sets	2 Sets	2 Sets	-	-	-	-
	100	3 Sets	3 Sets	3 Sets	5 Sets	5 Sets	5 Sets	5 Sets
	150	3 Sets	3 Sets	3 Sets	5 Sets	5 Sets	5 Sets	5 Sets
	200	3 Sets	3 Sets	3 Sets	5 Sets	5 Sets	5 Sets	5 Sets
	250	3 Sets	3 Sets	3 Sets	5 Sets	5 Sets	5 Sets	5 Sets
	300	3 Sets	3 Sets	3 Sets	5 Sets	5 Sets	5 Sets	5 Sets
	400	5 Sets	5 Sets	5 Sets	7 Sets	7 Sets	7 Sets	7 Sets
	500	5 Sets	5 Sets	5 Sets	7 Sets	7 Sets	7 Sets	7 Sets
600	5 Sets	5 Sets	5 Sets	7 Sets	7 Sets	7 Sets	7 Sets	

## Integrated Perforated Cable Trays - Return Flanges

Geçmeli Tip Kablo Kanalı - Интегрированные Перфорированные лотки



Important!  
Joining cable tray sections together only use  
Screw Sets CFS M6 or CFS M8

### Pre - Galvanised

GPK ... H50		0.6mm	
CODE	Width a mm	Length L mm	kg 1 mt
GPK 505 06 PG	50	3000	0.84
GPK 507 06 PG	75	3000	0.73
GPK 510 06 PG	100	3000	0.82
GPK 512 06 PG	125	3000	0.92
GPK 515 06 PG	150	3000	1.02
GPK 520 06 PG	200	3000	1.20
GPK ... H50		0.7mm	
GPK 505 07 PG	50	3000	0.80
GPK 507 07 PG	75	3000	0.91
GPK 510 07 PG	100	3000	1.02
GPK 512 07 PG	125	3000	1.14
GPK 515 07 PG	150	3000	1.26
GPK 520 07 PG	200	3000	1.49

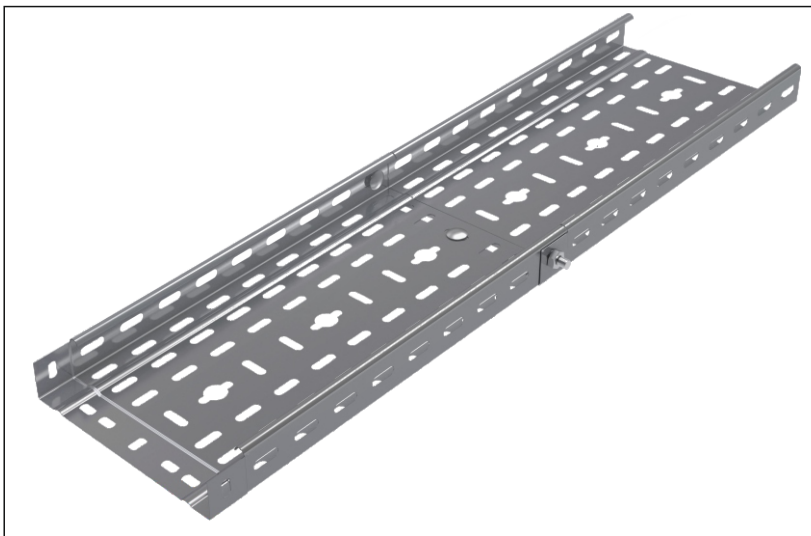
GPK ... H50		0.8mm	
CODE	Width a mm	Length L mm	kg 1 mt
GPK 505 08 PG	50	3000	0.84
GPK 507 08 PG	75	3000	0.97
GPK 510 08 PG	100	3000	1.10
GPK 512 08 PG	125	3000	1.22
GPK 515 08 PG	150	3000	1.34
GPK 520 08 PG	200	3000	1.60
GPK 522 08 PG	225	3000	1.72
GPK 525 08 PG	250	3000	1.85
GPK 530 08 PG	300	3000	2.10
GPK ... H50		1.0mm	
GPK 505 10 PG	50	3000	1.05
GPK 507 10 PG	75	3000	1.20
GPK 510 10 PG	100	3000	1.36
GPK 512 10 PG	125	3000	1.52
GPK 515 10 PG	150	3000	1.67
GPK 520 10 PG	200	3000	1.99
GPK 522 10 PG	225	3000	2.14
GPK 525 10 PG	250	3000	2.30
GPK 530 10 PG	300	3000	2.62
GPK 540 10 PG	400	3000	3.25
GPK ... H50		1.2mm	
GPK 545 12 PG	450	3000	4.27
GPK 550 12 PG	500	3000	4.65
GPK 560 12 PG	600	3000	5.40

### MATERIAL

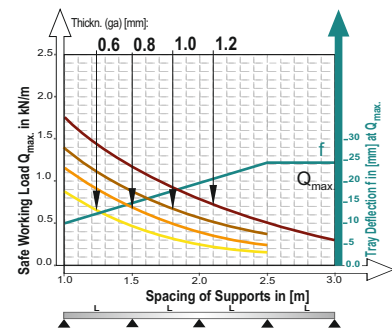
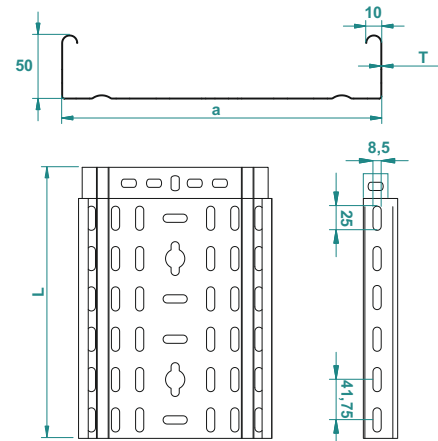
Steel, strip-galv. acc. to the Sendzimir method to TS-EN 10346:2011 (PG)

Thickn. (ga) [mm]: **0.6 | 0.7 | 0.8 | 1.0 | 1.2**

### Mounting Example



### GPK H50



This diagram comply with IEC 61537 with connection to 1/5 of the span and the end span = 0,8x the span  
 $Q = \text{max. admissible load (kg/m)}$   
 $L = \text{support distance (m)}$   
 $f = \text{Deflection (mm)} / \text{Max. deflection} = L/100$   
 Safely co-efficient = 1.5

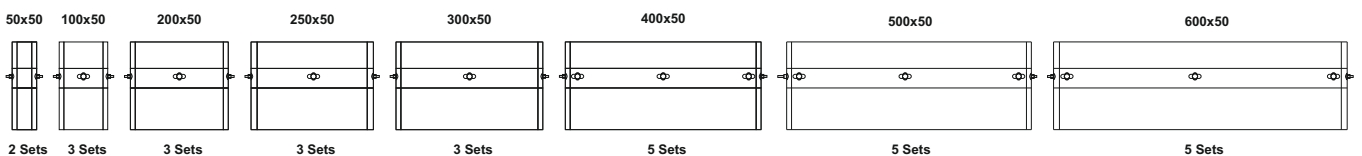


Width	Usable Cross-Section
50	23 cm <sup>2</sup>
100	48 cm <sup>2</sup>
150	73 cm <sup>2</sup>
200	98 cm <sup>2</sup>
300	148 cm <sup>2</sup>
400	198 cm <sup>2</sup>
500	248 cm <sup>2</sup>
600	298 cm <sup>2</sup>

### Recommended Quantities of Bolt and Nut For Integrated Cable Tray Connections

W	H	40	50	60	75	80	85	100
Width Of Cable Tray	50	2 Sets	2 Sets	2 Sets	-	-	-	-
	100	3 Sets	3 Sets	3 Sets	5 Sets	5 Sets	5 Sets	5 Sets
	150	3 Sets	3 Sets	3 Sets	5 Sets	5 Sets	5 Sets	5 Sets
	200	3 Sets	3 Sets	3 Sets	5 Sets	5 Sets	5 Sets	5 Sets
	250	3 Sets	3 Sets	3 Sets	5 Sets	5 Sets	5 Sets	5 Sets
	300	3 Sets	3 Sets	3 Sets	5 Sets	5 Sets	5 Sets	5 Sets
	400	5 Sets	5 Sets	5 Sets	7 Sets	7 Sets	7 Sets	7 Sets
	500	5 Sets	5 Sets	5 Sets	7 Sets	7 Sets	7 Sets	7 Sets
600	5 Sets	5 Sets	5 Sets	7 Sets	7 Sets	7 Sets	7 Sets	

### Recommended Quantities of Bolt and Nut For Integrated Cable Tray Connections



## Integrated Non Perforated Cable Trays - Return Flanges

Geçmeli Tip Deliksiz Kablo Kanalı - Интегрированные Сплошные лотки



Important!  
Joining cable tray sections together only use  
Screw Sets CFS M6 or CFS M8

### Pre - Galvanised

GDK ... H50		0.6mm			
CODE	Width a mm	Length L mm	Kg 1 mt	pcs	
GDK 505 06 PG	50	3000	0.80	2	
GDK 507 06 PG	75	3000	0.91	2	
GDK 510 06 PG	100	3000	1.03	2	
GDK 512 06 PG	125	3000	1.15	2	
GDK 515 06 PG	150	3000	1.27	2	
GDK 520 06 PG	200	3000	1.5	2	
GDK ... H50		0.7mm			
GDK 505 07 PG	50	3000	0.93	2	
GDK 507 07 PG	75	3000	1.07	2	
GDK 510 07 PG	100	3000	1.20	2	
GDK 512 07 PG	125	3000	1.34	2	
GDK 515 07 PG	150	3000	1.48	2	
GDK 520 07 PG	200	3000	1.75	2	

### MATERIAL

Steel, strip-galv. acc. to the Sendzimir method to TS-EN 10346:2011 (PG)

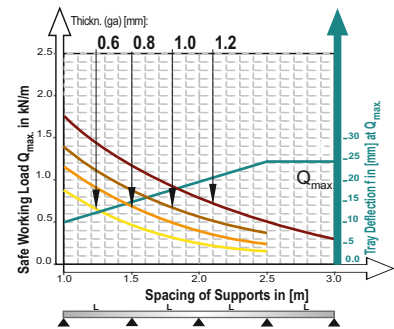
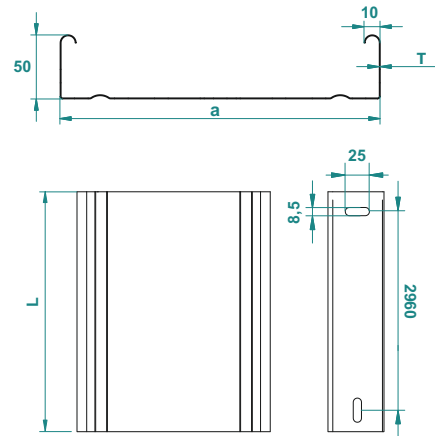
Thickn. (ga) [mm]: 0.6 | 0.7 | 0.8 | 1.0 | 1.2

### Mounting Example



GDK ... H50		0.8mm			
CODE	Width a mm	Length L mm	Kg 1 mt	pcs	
GDK 505 08 PG	50	3000	1.05	2	
GDK 507 08 PG	75	3000	1.21	2	
GDK 510 08 PG	100	3000	1.37	2	
GDK 512 08 PG	125	3000	1.52	2	
GDK 515 08 PG	150	3000	1.68	2	
GDK 520 08 PG	200	3000	2.00	2	
GDK 522 08 PG	225	3000	2.15	2	
GDK 525 08 PG	250	3000	2.31	2	
GDK 530 08 PG	300	3000	2.62	2	
GDK ... H50		1.0mm			
GDK 505 10 PG	50	3000	1.31	2	
GDK 507 10 PG	75	3000	1.50	2	
GDK 510 10 PG	100	3000	1.70	2	
GDK 512 10 PG	125	3000	1.90	2	
GDK 515 10 PG	150	3000	2.09	2	
GDK 520 10 PG	200	3000	2.49	2	
GDK 522 10 PG	225	3000	2.68	2	
GDK 525 10 PG	250	3000	2.88	2	
GDK 530 10 PG	300	3000	3.27	2	
GDK 540 10 PG	400	3000	4.06	2	
GDK ... H50		1.2mm			
GDK 545 12 PG	450	3000	5.34	2	
GDK 550 12 PG	500	3000	5.81	2	
GDK 560 12 PG	600	3000	6.75	2	

### GDK H50



This diagram comply with IEC 61537 with connection to 1/5 of the span and the end span = 0,8x the span  
 $Q = \text{max. admissible load (kg/m)}$   
 $L = \text{support distance (m)}$   
 $f = \text{Deflection (mm)} / \text{Max. deflection} = L/100$   
 Safety co-efficient = 1.5

Width	Usable Cross-Section
50	23 cm <sup>2</sup>
100	48 cm <sup>2</sup>
150	73 cm <sup>2</sup>
200	98 cm <sup>2</sup>
300	148 cm <sup>2</sup>
400	198 cm <sup>2</sup>
500	248 cm <sup>2</sup>
600	298 cm <sup>2</sup>

### Recommended Quantities of Bolt and Nut For Integrated Cable Tray Connections

W	H	40	50	60	75	80	85	100
		2 Sets	2 Sets	2 Sets	-	-	-	-
50	100	3 Sets	3 Sets	3 Sets	5 Sets	5 Sets	5 Sets	5 Sets
	150	3 Sets	3 Sets	3 Sets	5 Sets	5 Sets	5 Sets	5 Sets
200	250	3 Sets	3 Sets	3 Sets	5 Sets	5 Sets	5 Sets	5 Sets
	300	3 Sets	3 Sets	3 Sets	5 Sets	5 Sets	5 Sets	5 Sets
400	500	5 Sets	5 Sets	5 Sets	7 Sets	7 Sets	7 Sets	7 Sets
	600	5 Sets	5 Sets	5 Sets	7 Sets	7 Sets	7 Sets	7 Sets

### Recommended Quantities of Bolt and Nut For Integrated Cable Tray Connections



## Perforated Cable Trays - Return Flanges

Ağır Hizmet Kablo Kanalı - Перфорированные лотки



**Important!**  
Joining cable tray sections together only through the use of couplers 2 pcs for 1 Length  
To install cable tray - straight use Screw Sets CFS M6 or CFS M8

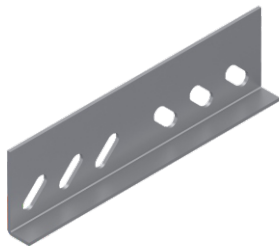
### Pre - Galvanised

APK ... H50		0.6mm	
CODE	Width a mm	Length L mm	KG 1 mt
APK 505 06 PG	50	3000	0.64
APK 507 06 PG	75	3000	0.73
APK 510 06 PG	100	3000	0.82
APK 512 06 PG	125	3000	0.92
APK 515 06 PG	150	3000	1.02
APK 520 06 PG	200	3000	1.20
		0.8mm	
APK 505 08 PG	50	3000	0.84
APK 507 08 PG	75	3000	0.97
APK 510 08 PG	100	3000	1.10
APK 512 08 PG	125	3000	1.22
APK 515 08 PG	150	3000	1.34
APK 520 08 PG	200	3000	1.60
APK 522 08 PG	225	3000	1.72
APK 525 08 PG	250	3000	1.85
APK 530 08 PG	300	3000	2.10
		1.0mm	
APK 505 10 PG	50	3000	1.05
APK 507 10 PG	75	3000	1.20
APK 510 10 PG	100	3000	1.36
APK 512 10 PG	125	3000	1.52
APK 515 10 PG	150	3000	1.67
APK 520 10 PG	200	3000	1.99
APK 522 10 PG	225	3000	2.14
APK 525 10 PG	250	3000	2.30
APK 530 10 PG	300	3000	2.62
APK 540 10 PG	400	3000	3.25

APK ... H50		1.2mm	
CODE	Width a mm	Length L mm	KG 1 mt
APK 505 12 PG	50	3000	1.26
APK 507 12 PG	75	3000	1.44
APK 510 12 PG	100	3000	1.63
APK 512 12 PG	125	3000	1.82
APK 515 12 PG	150	3000	2.01
APK 520 12 PG	200	3000	2.38
APK 522 12 PG	225	3000	2.58
APK 525 12 PG	250	3000	2.76
APK 530 12 PG	300	3000	3.14
APK 540 12 PG	400	3000	3.90
APK 545 12 PG	450	3000	4.27
APK 550 12 PG	500	3000	4.65
APK 560 12 PG	600	3000	5.40
		1.5mm	
APK 505 15 PG	50	3000	1.55
APK 507 15 PG	75	3000	1.78
APK 510 15 PG	100	3000	2.02
APK 512 15 PG	125	3000	2.26
APK 515 15 PG	150	3000	2.49
APK 520 15 PG	200	3000	2.96
APK 522 15 PG	225	3000	3.20
APK 525 15 PG	250	3000	3.43
APK 530 15 PG	300	3000	3.90
APK 540 15 PG	400	3000	4.85
APK 545 15 PG	450	3000	5.32
APK 550 15 PG	500	3000	5.78
APK 560 15 PG	600	3000	6.73

## Straight Connector (Coupler)

Birleştirme Elemanı - Прямой соединитель



To Install one lenght ;use 2 pieces of KBE connector 8 sets of CFS bolts and nuts. (M6 or M8)

### Pre - Galvanised

KBE 2 ... H50		1.0mm	
CODE	Length L mm	KG 1 pc	pcs
KBE 250 10 PG	175	0.09	100

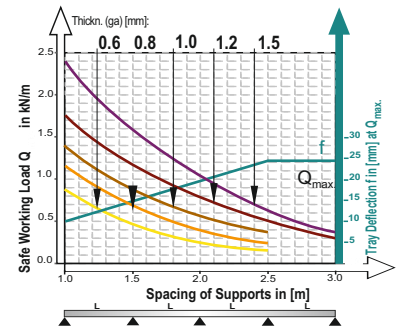
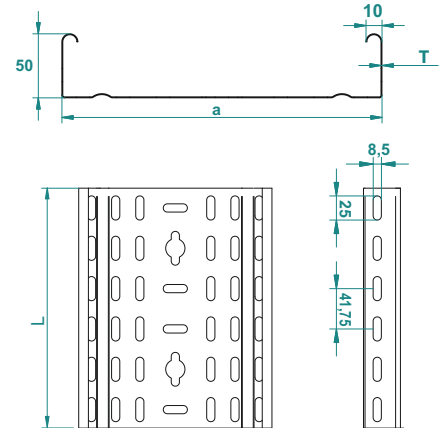
KBE 2 ... H50		1.2mm	
CODE	Length L mm	KG 1 pc	pcs
KBE 250 12 PG	175	0.09	100
		1.5mm	
KBE 250 15 PG	175	0.11	100

### Electro - Galvanized

CFS M6		M6	
CODE	Size mm	Length L mm	KG 1Set
CFS M6 EG	M6	15	0.008

CFS M8		M8	
CODE	Size mm	Length L mm	KG 1Set
CFS M8 EG	M8	15	0.014

## APK H50

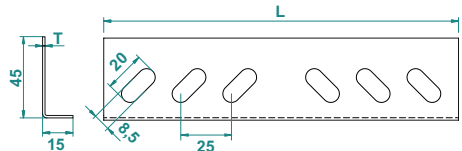


This diagram comply with IEC 61537 with connection to 1/5 of the span and the end span = 0,8x the span  
Q = max. admissible load (kg/m)  
L = support distance (m)  
f = Deflection (mm) / Max. deflection = L/100  
Safety co-efficient = 1.5

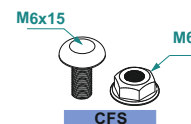
Width	Usable Cross-Section
50	23 cm <sup>2</sup>
100	48 cm <sup>2</sup>
150	73 cm <sup>2</sup>
200	98 cm <sup>2</sup>
300	148 cm <sup>2</sup>
400	198 cm <sup>2</sup>
500	248 cm <sup>2</sup>
600	298 cm <sup>2</sup>



## KBE 2 H50



M6x15 Round head squire neck bolt & M6 Flanged nut



### APPLICATIONS

Cable routing

### MATERIAL

Steel, strip-galv. acc. to the Sendzimir method to TS-EN 10346:2011 (PG)

Available finishes:

HDG-steel, hot-dip galv. to TS-EN ISO 1461:2011 (HDG)  
SS- stainless steel AISI 304L and AISI 316L (SS)  
EP- powder coating in a full range of colours (RAL)

Thickn. (ga) [mm]: **0.6 | 0.8 | 1.0 | 1.2 | 1.5**

## Non Perforated Cable Trays - Return Flanges

Ağır Hizmet Deliksiz Kablo Kanalı - Сплошные лотки



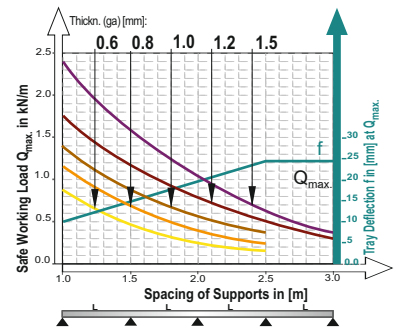
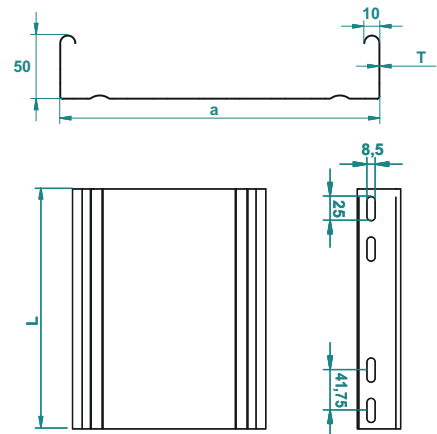
Important!  
Joining cable tray sections together only through the use of couplers 2 pcs for 1 Length  
To install cable tray - straight use Screw Sets CFS M6 or CFS M8

### Pre - Galvanised

ADK ... H50		0.6mm			
CODE	Width a mm	Length L mm	kg 1 mt	pcs	
ADK 505 06 PG	50	3000	0.80	2	
ADK 507 06 PG	75	3000	0.91	2	
ADK 510 06 PG	100	3000	1.03	2	
ADK 512 06 PG	125	3000	1.15	2	
ADK 515 06 PG	150	3000	1.27	2	
ADK 520 06 PG	200	3000	1.50	2	
		0.8mm			
ADK 505 08 PG	50	3000	1.05	2	
ADK 507 08 PG	75	3000	1.21	2	
ADK 510 08 PG	100	3000	1.37	2	
ADK 512 08 PG	125	3000	1.52	2	
ADK 515 08 PG	150	3000	1.68	2	
ADK 520 08 PG	200	3000	2.00	2	
ADK 522 08 PG	225	3000	2.15	2	
ADK 525 08 PG	250	3000	2.31	2	
ADK 530 08 PG	300	3000	2.62	2	
		1.0mm			
ADK 505 10 PG	50	3000	1.31	2	
ADK 507 10 PG	75	3000	1.50	2	
ADK 510 10 PG	100	3000	1.70	2	
ADK 512 10 PG	125	3000	1.90	2	
ADK 515 10 PG	150	3000	2.09	2	
ADK 520 10 PG	200	3000	2.49	2	
ADK 522 10 PG	225	3000	2.68	2	
ADK 525 10 PG	250	3000	2.88	2	
ADK 530 10 PG	300	3000	3.27	2	
ADK 540 10 PG	400	3000	4.06	2	

ADK ... H50		1.2mm			
CODE	Width a mm	Length L mm	kg 1 mt	pcs	
ADK 505 12 PG	50	3000	1.57	2	
ADK 507 12 PG	75	3000	1.80	2	
ADK 510 12 PG	100	3000	2.04	2	
ADK 512 12 PG	125	3000	2.28	2	
ADK 515 12 PG	150	3000	2.51	2	
ADK 520 12 PG	200	3000	2.98	2	
ADK 522 12 PG	225	3000	3.22	2	
ADK 525 12 PG	250	3000	3.45	2	
ADK 530 12 PG	300	3000	3.92	2	
ADK 540 12 PG	400	3000	4.87	2	
ADK 545 12 PG	450	3000	5.34	2	
ADK 550 12 PG	500	3000	5.81	2	
ADK 560 12 PG	600	3000	6.75	2	
		1.5mm			
ADK 505 15 PG	50	3000	1.94	2	
ADK 507 15 PG	75	3000	2.23	2	
ADK 510 15 PG	100	3000	2.52	2	
ADK 512 15 PG	125	3000	2.82	2	
ADK 515 15 PG	150	3000	3.11	2	
ADK 520 15 PG	200	3000	3.70	2	
ADK 522 15 PG	225	3000	4.00	2	
ADK 525 15 PG	250	3000	4.29	2	
ADK 530 15 PG	300	3000	4.88	2	
ADK 540 15 PG	400	3000	6.06	2	
ADK 545 15 PG	450	3000	6.65	2	
ADK 550 15 PG	500	3000	7.23	2	
ADK 560 15 PG	600	3000	8.41	2	

### ADK H50



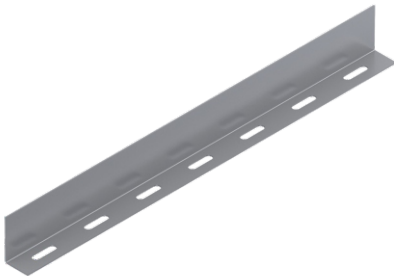
This diagram comply with IEC 61537 with connection to 1/5 of the span and the end span = 0,8x the span  
Q = max. admissible load (kg/m)  
L = support distance (m)  
f = Deflection (mm) / Max. deflection = L/100  
Safety co-efficient = 1.5

Width	Usable Cross-Section
50	23 cm <sup>2</sup>
100	48 cm <sup>2</sup>
150	73 cm <sup>2</sup>
200	98 cm <sup>2</sup>
300	148 cm <sup>2</sup>
400	198 cm <sup>2</sup>
500	248 cm <sup>2</sup>
600	298 cm <sup>2</sup>



## Seperator

Seperator - Перегородка



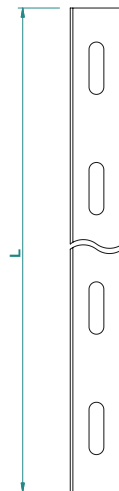
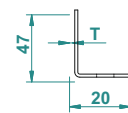
To Install Seperator use CFS bolts and nuts. ( M6 or M8)

### Pre - Galvanised

SEP 1 ... H50		1.0mm			
CODE	Length L mm	kg 1m	pcs		
SEP 150 10 PG	3000	0.5	1		

SEP 1 ... H50		1.5mm			
CODE	Length L mm	kg 1m	pcs		
SEP 150 15 PG	3000	0.75	1		

### SEP 1



APPLICATIONS  
Cable routing

MATERIAL  
Steel, strip-galv. acc. to the Sendzimir method to TS-EN 10346:2011 (PG)

Available finishes:  
HDG-steel, hot-dip galv. to TS-EN ISO 1461:2011 (HDG)  
SS- stainless steel AISI 304L and AISI 316L (SS)  
EP- powder coating in a full range of colours (RAL)

Thickn. (ga) [mm]: **0.6 0.8 1.0 1.2 1.5**

## 90° Horizontal Bend of Cable Tray

90° Yatay Kanal Dönüş Elemanı - Угол горизонтальный 90°



Pre - Galvanised

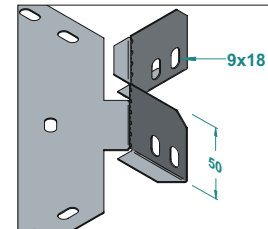
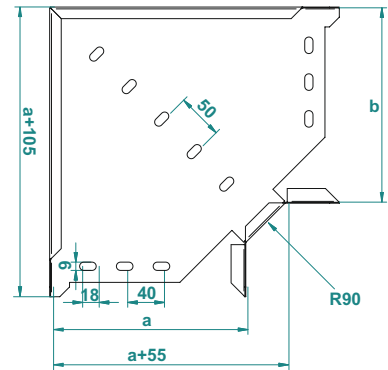
Important!

To install cable tray - bend use Screw Sets CFS M6 or CFS M8

KA90 ... H50		0.8mm	
CODE	Width a=b mm	KG 1 pc	pcs
KA90 505 08 PG	50	0.20	1
KA90 507 08 PG	75	0.25	1
KA90 510 08 PG	100	0.37	1
KA90 512 08 PG	125	0.45	1
KA90 515 08 PG	150	0.52	1
KA90 520 08 PG	200	0.70	1
		1.0mm	
KA90 505 10 PG	50	0.25	1
KA90 507 10 PG	75	0.32	1
KA90 510 10 PG	100	0.47	1
KA90 512 10 PG	125	0.57	1
KA90 515 10 PG	150	0.66	1
KA90 520 10 PG	200	0.88	1
KA90 522 10 PG	225	1.01	1
KA90 525 10 PG	250	1.14	1
KA90 530 10 PG	300	1.49	1
KA90 540 10 PG	400	2.10	1

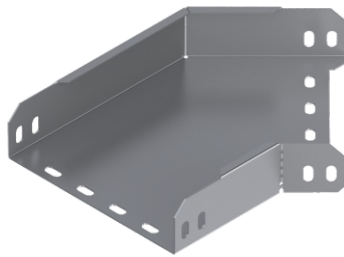
KA90 ... H50		1.2mm	
CODE	Width a=b mm	KG 1 pc	pcs
KA90 530 12 PG	300	1.81	1
KA90 540 12 PG	400	2.62	1
KA90 545 12 PG	450	3.09	1
KA90 450 12 PG	500	3.58	1
KA90 560 12 PG	600	4.70	1
		1.5mm	
KA90 505 15 PG	50	0.38	1
KA90 507 15 PG	75	0.48	1
KA90 510 15 PG	100	0.71	1
KA90 512 15 PG	125	0.85	1
KA90 515 15 PG	150	0.99	1
KA90 520 15 PG	200	1.33	1
KA90 522 15 PG	225	1.50	1
KA90 525 15 PG	250	1.70	1
KA90 530 15 PG	300	2.26	1
KA90 540 15 PG	400	3.28	1
KA90 545 15 PG	450	3.86	1
KA90 550 15 PG	500	4.49	1
KA90 560 15 PG	600	5.88	1

### KA90 H50



## 45° Horizontal Bend of Cable Tray

45° Yatay Kanal Dönüş Elemanı - Угол горизонтальный 45°



Pre - Galvanised

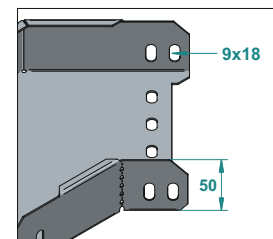
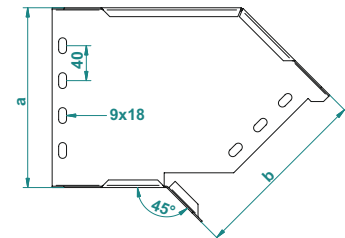
Important!

To install cable tray - bend use Screw Sets CFS M6 or CFS M8

KA45 ... H50		0.8mm	
CODE	Width a=b mm	KG 1 pc	pcs
KA45 505 08 PG	50	0.20	1
KA45 507 08 PG	75	0.26	1
KA45 510 08 PG	100	0.32	1
KA45 512 08 PG	125	0.42	1
KA45 515 08 PG	150	0.49	1
KA45 520 08 PG	200	0.68	1
		1.0mm	
KA45 505 10 PG	50	0.26	1
KA45 507 10 PG	75	0.33	1
KA45 510 10 PG	100	0.41	1
KA45 512 10 PG	125	0.53	1
KA45 515 10 PG	150	0.62	1
KA45 520 10 PG	200	0.85	1
KA45 522 10 PG	225	0.97	1
KA45 525 10 PG	250	1.10	1
KA45 530 10 PG	300	1.32	1
KA45 540 10 PG	400	1.94	1

KA45 ... H50		1.2mm	
CODE	Width a=b mm	KG 1 pc	pcs
KA45 530 12 PG	300	1.65	1
KA45 540 12 PG	400	2.43	1
KA45 545 12 PG	450	2.88	1
KA45 550 12 PG	500	3.37	1
KA45 560 12 PG	600	4.45	1
		1.5mm	
KA45 505 15 PG	50	0.39	1
KA45 507 15 PG	75	0.50	1
KA45 510 15 PG	100	0.61	1
KA45 512 15 PG	125	0.80	1
KA45 515 15 PG	150	0.94	1
KA45 520 15 PG	200	1.26	1
KA45 522 15 PG	225	1.45	1
KA45 525 15 PG	250	1.64	1
KA45 530 15 PG	300	2.06	1
KA45 540 15 PG	400	3.04	1
KA45 545 15 PG	450	3.60	1
KA45 550 15 PG	500	4.21	1
KA45 560 15 PG	600	5.56	1

### KA45 H50



### APPLICATIONS

Cable routing

### MATERIAL

Steel, strip-galv. acc. to the Sendzimir method to TS-EN 10346:2011 (PG)

Available finishes:

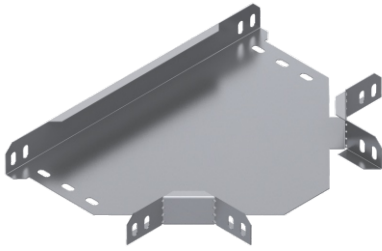
- HDG-steel, hot-dip galv. to TS-EN ISO 1461:2011 (HDG)
- SS- stainless steel AISI 304L and AISI 316L (SS)
- EP- powder coating in a full range of colours (RAL)

Thickn. (ga) [mm]:

**0.6 0.8 1.0 1.2 1.5**

## Tea Horizontal Bend of Cable Tray

"T" Yatay Kanal Dönüş Elemanı - T-отвод горизонтальный



Pre - Galvanised

KAT ... H50		0.8mm	
CODE	Width a=b=c mm	kg 1 pc	pcs
KAT 505 08 PG	50	0.25	1
KAT 507 08 PG	75	0.31	1
KAT 510 08 PG	100	0.47	1
KAT 512 08 PG	125	0.56	1
KAT 515 08 PG	150	0.64	1
KAT 520 08 PG	200	0.84	1
KAT ... H50		1.0mm	
KAT 505 10 PG	50	0.32	1
KAT 507 10 PG	75	0.39	1
KAT 510 10 PG	100	0.59	1
KAT 512 10 PG	125	0.70	1
KAT 515 10 PG	150	0.81	1
KAT 520 10 PG	200	1.05	1
KAT 522 10 PG	225	1.18	1
KAT 525 10 PG	250	1.32	1
KAT 530 10 PG	300	1.73	1
KAT 540 10 PG	400	2.44	1

Important!  
To install cable tray - bend use Screw Sets CFS M6 or CFS M8

KAT ... H50		1.2mm	
CODE	Width a=b=c mm	kg 1 pc	pcs
KAT 530 12 PG	300	2.16	1
KAT 540 12 PG	400	3.05	1
KAT 545 12 PG	450	3.54	1
KAT 550 12 PG	500	4.08	1
KAT 560 12 PG	600	5.27	1
KAT ... H50		1.5mm	
KAT 505 15 PG	50	0.48	1
KAT 507 15 PG	75	0.59	1
KAT 510 15 PG	100	0.90	1
KAT 512 15 PG	125	1.05	1
KAT 515 15 PG	150	1.21	1
KAT 520 15 PG	200	1.57	1
KAT 522 15 PG	225	1.77	1
KAT 525 15 PG	250	1.98	1
KAT 530 15 PG	300	2.70	1
KAT 540 15 PG	400	3.81	1
KAT 545 15 PG	450	4.43	1
KAT 550 15 PG	500	5.10	1
KAT 560 15 PG	600	6.58	1

## Cross Bend of Cable Tray

4'lü Bağlantı Elemanı- Крестовина



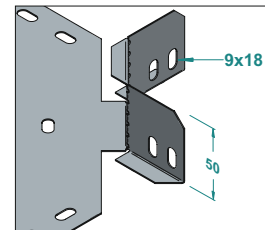
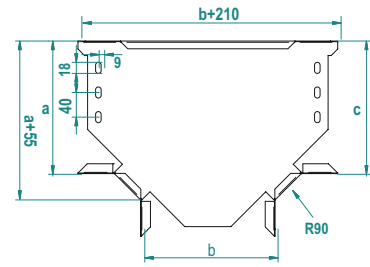
Pre - Galvanised

KAD ... H50		0.8mm	
CODE	Width a=b=c=d mm	kg 1 pc	pcs
KAD 505 08 PG	50	0.32	1
KAD 507 08 PG	75	0.40	1
KAD 510 08 PG	100	0.59	1
KAD 512 08 PG	125	0.68	1
KAD 515 08 PG	150	0.78	1
KAD 520 08 PG	200	0.99	1
KAD ... H50		1.0mm	
KAD 505 10 PG	50	0.41	1
KAD 507 10 PG	75	0.50	1
KAD 510 10 PG	100	0.74	1
KAD 512 10 PG	125	0.86	1
KAD 515 10 PG	150	0.98	1
KAD 520 10 PG	200	1.24	1
KAD 522 10 PG	225	1.38	1
KAD 525 10 PG	250	1.54	1
KAD 530 10 PG	300	2.10	1
KAD 540 10 PG	400	2.83	1

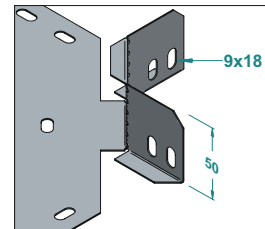
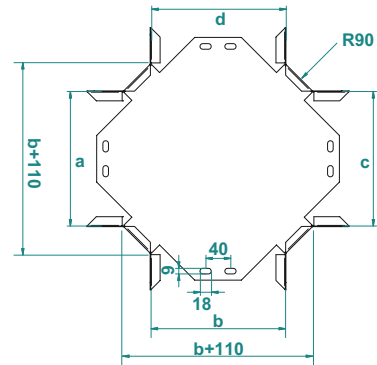
Important!  
To install cable tray - bend use Screw Sets CFS M6 or CFS M8

KAD ... H50		1.2mm	
CODE	Width a=b=c=d mm	kg 1 pc	pcs
KAD 530 12 PG	300	2.58	1
KAD 540 12 PG	400	3.54	1
KAD 545 12 PG	450	4.07	1
KAD 550 12 PG	500	4.64	1
KAD 560 12 PG	600	5.90	1
KAD ... H50		1.5mm	
KAD 505 15 PG	50	0.62	1
KAD 507 15 PG	75	0.74	1
KAD 510 15 PG	100	0.12	1
KAD 512 15 PG	125	1.29	1
KAD 515 15 PG	150	1.47	1
KAD 520 15 PG	200	1.86	1
KAD 522 15 PG	225	1.08	1
KAD 525 15 PG	250	2.31	1
KAD 530 15 PG	300	3.22	1
KAD 540 15 PG	400	4.42	1
KAD 545 15 PG	450	4.09	1
KAD 550 15 PG	500	5.81	1
KAD 560 15 PG	600	7.38	1

### KAT H50



### KAD H50



### APPLICATIONS

Cable routing

### MATERIAL

Steel, strip-galv. acc. to the Sendzimir method to TS-EN 10346:2011 (PG)

Available finishes:

HDG-steel, hot-dip galv. to TS-EN ISO 1461:2011 (HDG)

SS- stainless steel AISI 304L and AISI 316L (SS)

EP- powder coating in a full range of colours (RAL)

Thickn. (ga) [mm]:

0.6 | 0.8 | 1.0 | 1.2 | 1.5

## Vertical Outside Bend of Cable Tray (Flexible)

Kanal Dış Bükey - Арка универсальная, внешний изгиб



KADB ... H50		0.8mm		kg	pcs
CODE	Width a mm	Length L mm	kg	1 pc	pcs
KADB 505 08 PG	50	600	0.52	1	
KADB 507 08 PG	75	600	0.60	1	
KADB 510 08 PG	100	600	0.68	1	
KADB 512 08 PG	125	600	0.76	1	
KADB 515 08 PG	150	600	0.84	1	
KADB 520 08 PG	200	600	1.00	1	
KADB ... H50		1.0mm		kg	pcs
CODE	Width a mm	Length L mm	kg	1 pc	pcs
KADB 505 10 PG	50	600	0.66	1	
KADB 507 10 PG	75	600	0.75	1	
KADB 510 10 PG	100	600	0.85	1	
KADB 512 10 PG	125	600	0.95	1	
KADB 515 10 PG	150	600	1.05	1	
KADB 520 10 PG	200	600	1.25	1	
KADB 522 10 PG	225	600	1.34	1	
KADB 525 10 PG	250	600	1.44	1	
KADB 530 10 PG	300	600	1.59	1	
KADB 540 10 PG	400	600	2.34	1	

KADB ... H50		1.2mm		kg	pcs
CODE	Width a mm	Length L mm	kg	1 pc	pcs
KADB 530 12 PG	300	600	1.96	1	
KADB 540 12 PG	400	600	2.92	1	
KADB 545 12 PG	450	600	3.20	1	
KADB 550 12 PG	500	600	3.49	1	
KADB 560 12 PG	600	600	4.05	1	
KADB ... H50		1.5mm		kg	pcs
CODE	Width a mm	Length L mm	kg	1 pc	pcs
KADB 505 15 PG	50	600	0.97	1	
KADB 507 15 PG	75	600	1.12	1	
KADB 510 15 PG	100	600	1.26	1	
KADB 512 15 PG	125	600	1.41	1	
KADB 515 15 PG	150	600	1.56	1	
KADB 520 15 PG	200	600	1.86	1	
KADB 522 15 PG	225	600	2.00	1	
KADB 525 15 PG	250	600	2.14	1	
KADB 530 15 PG	300	600	2.44	1	
KADB 540 15 PG	400	600	3.63	1	
KADB 545 15 PG	450	600	3.99	1	
KADB 550 15 PG	500	600	4.34	1	
KADB 560 15 PG	600	600	5.05	1	

## Vertical Inside Bend of Cable Tray (Flexible)

Kanal İç Bükey - Арка универсальная, внутренний изгиб



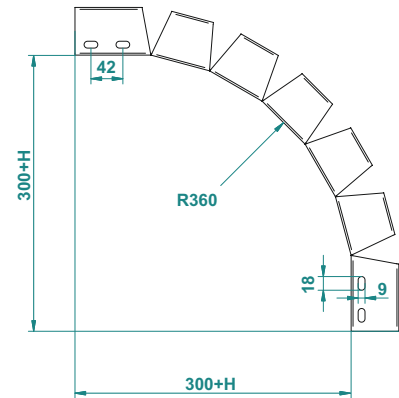
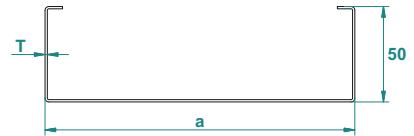
Pre - Galvanised

KAIB ... H50		0.8mm		kg	pcs
CODE	Width a mm	Length L mm	kg	1 pc	pcs
KAIB 505 08 PG	50	600	0.52	1	
KAIB 507 08 PG	75	600	0.60	1	
KAIB 510 08 PG	100	600	0.68	1	
KAIB 512 08 PG	125	600	0.76	1	
KAIB 515 08 PG	150	600	0.84	1	
KAIB 520 08 PG	200	600	1.00	1	
KAIB ... H50		1.0mm		kg	pcs
CODE	Width a mm	Length L mm	kg	1 pc	pcs
KAIB 505 10 PG	50	600	0.66	1	
KAIB 507 10 PG	75	600	0.75	1	
KAIB 510 10 PG	100	600	0.85	1	
KAIB 512 10 PG	125	600	0.95	1	
KAIB 515 10 PG	150	600	1.05	1	
KAIB 520 10 PG	200	600	1.25	1	
KAIB 522 10 PG	225	600	1.34	1	
KAIB 525 10 PG	250	600	1.44	1	
KAIB 530 10 PG	300	600	1.59	1	
KAIB 540 10 PG	400	600	2.34	1	

Important!  
To install vertical bend - use 2 pieces of KBE connectors and 4 sets of CFS bolts and nuts (M6 or M8).

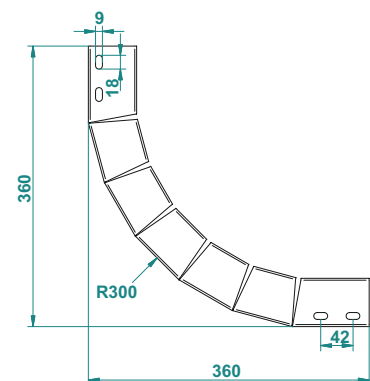
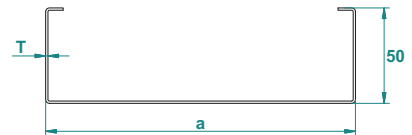
KAIB ... H50		1.2mm		kg	pcs
CODE	Width a mm	Length L mm	kg	1 pc	pcs
KAIB 530 12 PG	300	600	1.96	1	
KAIB 540 12 PG	400	600	2.92	1	
KAIB 545 12 PG	450	600	3.02	1	
KAIB 550 12 PG	500	600	3.49	1	
KAIB 560 12 PG	600	600	4.05	1	
KAIB ... H50		1.5mm		kg	pcs
CODE	Width a mm	Length L mm	kg	1 pc	pcs
KAIB 505 15 PG	50	600	0.97	1	
KAIB 507 15 PG	75	600	1.12	1	
KAIB 510 15 PG	100	600	1.26	1	
KAIB 512 15 PG	125	600	1.41	1	
KAIB 515 15 PG	150	600	1.56	1	
KAIB 520 15 PG	200	600	1.86	1	
KAIB 522 15 PG	225	600	2.00	1	
KAIB 525 15 PG	250	600	2.14	1	
KAIB 530 15 PG	300	600	2.44	1	
KAIB 540 15 PG	400	600	3.63	1	
KAIB 545 15 PG	450	600	3.99	1	
KAIB 550 15 PG	500	600	4.34	1	
KAIB 560 15 PG	600	600	5.05	1	

### KADB H50



KADB and KAIB are the same items, shipped flat.  
To install - Bend manually during application.  
in Flat Length = 600mm

### KAIB H50



KADB and KAIB are the same items, shipped flat.  
To install - Bend manually during application.  
in Flat Length = 600mm

### APPLICATIONS

Cable routing

### MATERIAL

Steel, strip-galv. acc. to the Sendzimir method to TS-EN 10346:2011 (PG)

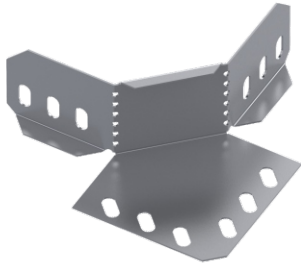
Available finishes:

HDG-steel, hot-dip galv. to TS-EN ISO 1461:2011 (HDG)  
SS- stainless steel AISI 304L and AISI 316L (SS)  
EP- powder coating in a full range of colours (RAL)

Thickn. (ga) [mm]: **0.6 | 0.8 | 1.0 | 1.2 | 1.5**

## Add On 90° Horizontal Corner Bend of Cable Tray

90° Köşe Yatay Kanal Dönüş Eki - Угол 90° Врезной



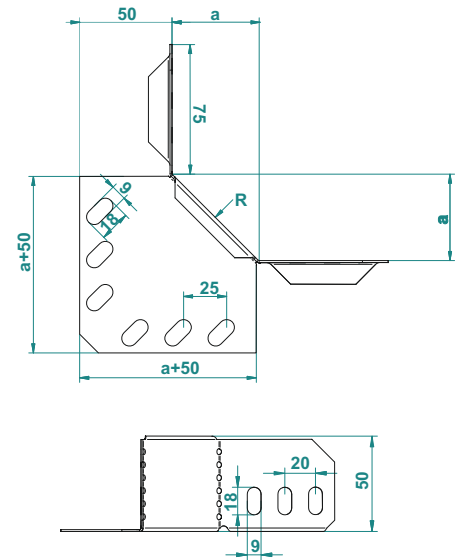
Pre - Galvanised

KA90E ... H50		0.8mm		
CODE	a mm	Radius R mm	KG 1 pc	pcs
KA90E 5 08 PG	55	90	0.16	1
KA90ER1 5 08 PG	90	150	0.24	1
KA90ER2 5 08 PG	180	300	0.51	1
		1.0mm		
KA90E 5 10 PG	55	90	0.16	1
KA90ER1 5 10 PG	90	150	0.24	1
KA90ER2 5 10 PG	180	300	0.51	1

Important!  
To install cable tray - bend use Screw Sets CFS M6 or CFS M8

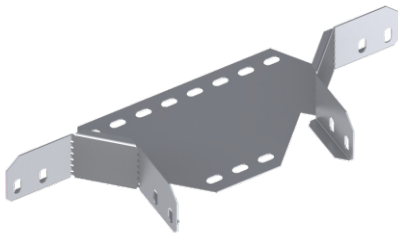
KA90E ... H50		1.5mm		
CODE	a mm	Radius R mm	KG 1 pc	pcs
KA90E 5 15 PG	55	90	0.24	1
KA90ER1 5 15 PG	90	150	0.37	1
KA90ER2 5 15 PG	180	300	0.76	1

KA90E H50



## Add on tee horizontal bend

"T" yatay kanal dönüő eki - T-отвод горизонтальный врезной



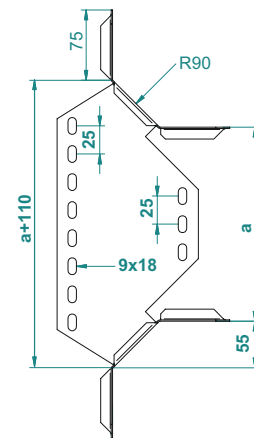
Pre - Galvanised

KATE ... H50		0.8mm		
CODE	Width a mm	Radius R mm	KG 1 pc	pcs
KATE 510 08 PG	100	90	0.28	1
KATE 512 08 PG	125	90	0.30	1
KATE 515 08 PG	150	90	0.32	1
KATE 520 08 PG	200	90	0.36	1
		1.0mm		
KATE 510 10 PG	100	90	0.36	1
KATE 512 10 PG	125	90	0.38	1
KATE 515 10 PG	150	90	0.41	1
KATE 520 10 PG	200	90	0.46	1
KATE 522 10 PG	225	90	0.49	1
KATE 525 10 PG	250	90	0.51	1
KATE 530 10 PG	300	90	0.54	1
KATE 540 10 PG	400	90	0.63	1

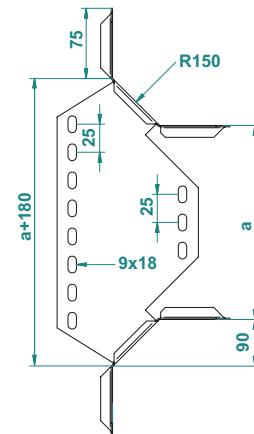
Important!  
To install cable tray - bend use Screw Sets CFS M6 or CFS M8

KATE ... H50		1.2mm		
CODE	Width a mm	Radius R mm	KG 1 pc	pcs
KATE 530 12 PG	300	90	0.67	1
KATE 540 12 PG	400	90	0.79	1
KATE 545 12 PG	450	90	0.86	1
KATE 550 12 PG	500	90	0.92	1
KATE 560 12 PG	600	90	1.04	1
		1.5mm		
KATER1 510 15 PG	100	150	1.05	1
KATER1 512 15 PG	125	150	1.11	1
KATER1 515 15 PG	150	150	1.18	1
KATER1 520 15 PG	200	150	1.30	1
KATER1 522 15 PG	225	150	1.36	1
KATER1 525 15 PG	250	150	1.42	1
KATER1 530 15 PG	300	150	1.54	1
KATER1 540 15 PG	400	150	1.78	1
KATER1 545 15 PG	450	150	1.91	1
KATER1 550 15 PG	500	150	2.03	1
KATER1 560 15 PG	600	150	2.28	1

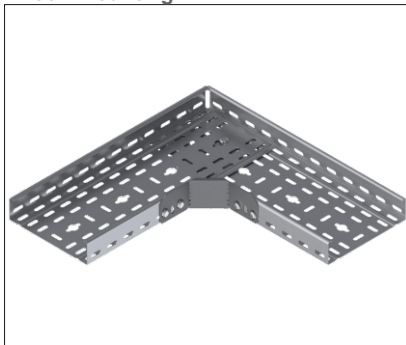
KATE



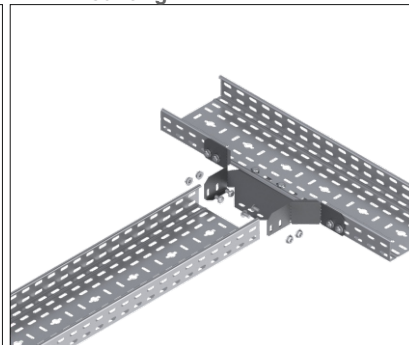
KATER1



KA90E Mounting



KATE Mounting



APPLICATIONS  
Cable routing

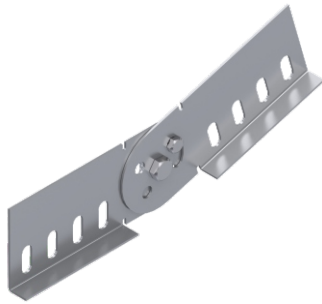
MATERIAL  
Steel, strip-galv. acc. to the Sendzimir method to TS-EN 10346:2011 (PG)

Available finishes:  
HDG-steel, hot-dip galv. to TS-EN ISO 1461:2011 (HDG)  
SS- stainless steel AISI 304L and AISI 316L (SS)  
EP- powder coating in a full range of colours (RAL)

Thickn. (ga) [mm]: **0.6 0.8 1.0 1.2 1.5**

## Adjustable Vertical Connector (2 Pcs)

*Dikey Seviye Degistirme Eki (2 Adet) - Шарнирный соединитель для лотка*



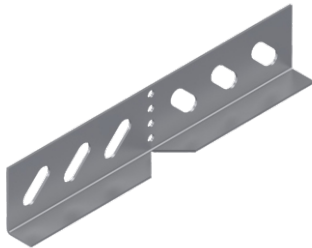
Pre - Galvanised

To Install one lenght; use 2 pieces of BDD connector and 10 sets of CFS bolts and nuts. (M6 or M8)

BDD 2 ... H50				BDD 2 ... H50			
			1.2mm				1.5mm
CODE	Length L mm	KG 1 pc	pcs	CODE	Length L mm	KG 1 pc	pcs
BDD 250 12 PG	250	0.16	1	BDD 250 15 PG	250	0.2	1

## Adjustable Horizontal Connector

*Yatay Seviye Degistirme Eki - Угловой соединитель*



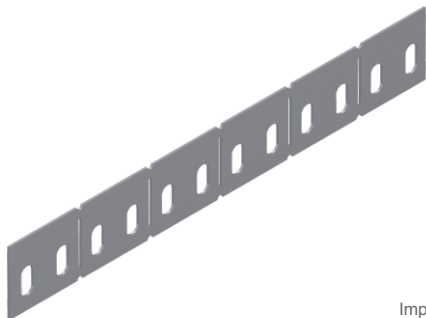
Pre - Galvanised

To Install one lenght; use 2 pieces of BYD connector and 8 sets of CFS bolts and nuts. (M6 or M8)

BYD 2 ... H50				BYD 2 ... H50			
			1.2mm				1.5mm
CODE	Length L mm	KG 1 pc	pcs	CODE	Length L mm	KG 1 pc	pcs
BYD 250 12 PG	175	0.09	1	BYD 250 15 PG	175	0.11	1

## Adjustable horizontal connector - Long Type

*Yatay seviye degistirme eki uzun tip - Угловой соединитель - длинный*

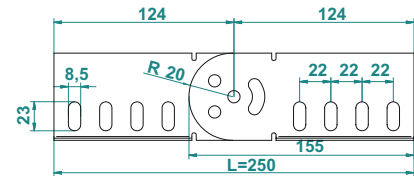


Pre - Galvanised

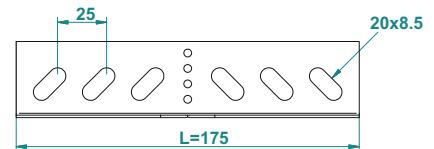
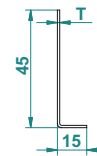
Important!  
To install cable tray - connector use Screw Sets CFS M6 or CFS M8

BYDU 1 ... H50				BYDU 1 ... H50			
			1.2mm				1.5mm
CODE	Length L mm	KG 1 pc	pcs	CODE	Length L mm	KG 1 pc	pcs
BYDU 150 12 PG	1000	0.3	1	BYDU 150 15 PG	1000	0.38	1

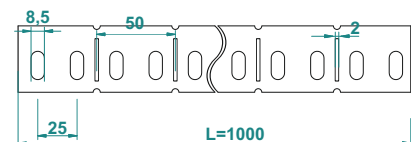
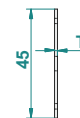
### BDD 2 H50



### BYD 2 H50



### BYDU 1 H50



APPLICATIONS  
Cable routing

MATERIAL

Steel, strip-galv. acc. to the Sendzimir method to TS-EN 10346:2011 (PG)

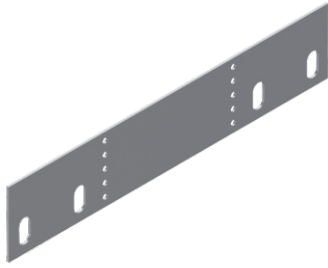
Available finishes:

HDG-steel, hot-dip galv. to TS-EN ISO 1461:2011 (HDG)  
SS- stainless steel AISI 304L and AISI 316L (SS)  
EP- powder coating in a full range of colours (RAL)

Thickn. (ga) [mm]: **0.6 0.8 1.0 1.2 1.5**

## Reducer Connector - Single Type

Redüksiyon Eki (Tek) - Редукционный переходник



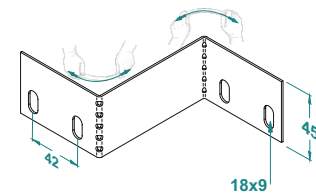
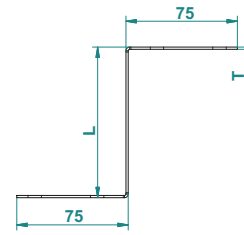
Pre - Galvanised

Important!  
To install cable tray - reducer use Screw Sets  
CFS M6 or CFS M8

RT ... H50		1.5mm	
CODE	Length L mm	KG 1 pc	pcs
RT 50 25 15 PG	25	0,093	1
RT 50 50 15 PG	50	0,106	1
RT 50 75 15 PG	75	0,119	1
RT 50 100 15 PG	100	0,132	1
RT 50 125 15 PG	125	0,146	1
RT 50 150 15 PG	150	0,159	1
RT 50 175 15 PG	175	0,172	1
RT 50 200 15 PG	200	0,185	1
RT 50 225 15 PG	225	0,199	1
RT 50 250 15 PG	250	0,212	1
RT 50 275 15 PG	275	0,225	1
RT 50 300 15 PG	300	0,239	1

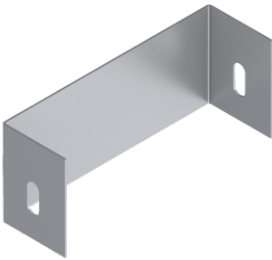
RT ... H50		1.5mm	
CODE	Length L mm	KG 1 pc	pcs
RT 50 325 15 PG	325	0,252	1
RT 50 350 15 PG	350	0,265	1
RT 50 375 15 PG	375	0,278	1
RT 50 400 15 PG	400	0,292	1
RT 50 425 15 PG	425	0,305	1
RT 50 450 15 PG	450	0,318	1
RT 50 475 15 PG	475	0,331	1
RT 50 500 15 PG	500	0,345	1
RT 50 525 15 PG	525	0,357	1
RT 50 550 15 PG	550	0,371	1
RT 50 575 15 PG	575	0,384	1

## RT H50



## Stop End (Blind End)

Sonlandırma - Заглушка



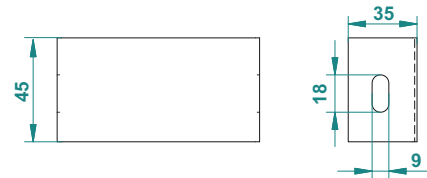
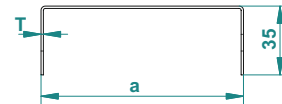
Pre - Galvanised

Important!  
To install cable tray - stop end use Screw Sets  
CFS M6 or CFS M8

SON ... H50		1.2mm	
CODE	Width a mm	KG 1 pc	pcs
SON 505 12 PG	50	0,072	1
SON 507 12 PG	75	0,083	1
SON 510 12 PG	100	0,094	1
SON 512 12 PG	125	0,104	1
SON 515 12 PG	150	0,114	1
SON 520 12 PG	200	0,136	1
SON 522 12 PG	225	0,146	1
SON 525 12 PG	250	0,157	1
SON 530 12 PG	300	0,178	1
SON 540 12 PG	400	0,221	1
SON 545 12 PG	450	0,241	1
SON 550 12 PG	500	0,263	1
SON 560 12 PG	600	0,305	1

SON ... H50		1.5mm	
CODE	Width a mm	KG 1 pc	pcs
SON 505 15 PG	50	0,090	1
SON 507 15 PG	75	0,104	1
SON 510 15 PG	100	0,117	1
SON 512 15 PG	125	0,130	1
SON 515 15 PG	150	0,143	1
SON 520 15 PG	200	0,169	1
SON 522 15 PG	225	0,183	1
SON 525 15 PG	250	0,196	1
SON 530 15 PG	300	0,222	1
SON 540 15 PG	400	0,275	1
SON 545 15 PG	450	0,302	1
SON 550 15 PG	500	0,329	1
SON 560 15 PG	600	0,382	1

## SON H50



### APPLICATIONS

Cable routing

### MATERIAL

Steel, strip-galv. acc. to the Sendzimir method  
to TS-EN 10346:2011 (PG)

Available finishes:

HDG-steel, hot-dip galv. to TS-EN ISO 1461:2011 (HDG)  
SS- stainless steel AISI 304L and AISI 316L (SS)  
EP- powder coating in a full range of colours (RAL)

Thickn. (ga) [mm]: **0.6 0.8 1.0 1.2 1.5**