

## Cable Ladder

Kablo Merdiveni - Кабельросты (Лестничные лотки)



**Important!**  
Joining cable tray sections together only through the use of couplers 2 pcs for 1 Length  
To install cable tray - straight use Screw Sets CFS M6 or CFS M8

### Pre - Galvanised

| PKM ...       |            | H80...      |         | 1.2mm |               | PKM ...    |             | H80...  |     | 1.5mm |  |
|---------------|------------|-------------|---------|-------|---------------|------------|-------------|---------|-----|-------|--|
| CODE          | Width W mm | Length L mm | kg 1 mt | pcs   | CODE          | Width W mm | Length L mm | kg 1 mt | pcs |       |  |
| PKM 810 12 PG | 100        | 3000        | 2.06    | 2     | PKM 815 15 PG | 100        | 3000        | 2.58    | 2   |       |  |
| PKM 815 12 PG | 150        | 3000        | 2.16    | 2     | PKM 815 15 PG | 150        | 3000        | 2.70    | 2   |       |  |
| PKM 820 12 PG | 200        | 3000        | 2.26    | 2     | PKM 820 15 PG | 200        | 3000        | 2.83    | 2   |       |  |
| PKM 825 12 PG | 250        | 3000        | 2.36    | 2     | PKM 825 15 PG | 250        | 3000        | 2.95    | 2   |       |  |
| PKM 830 12 PG | 300        | 3000        | 2.46    | 2     | PKM 830 15 PG | 300        | 3000        | 3.07    | 2   |       |  |
| PKM 840 12 PG | 400        | 3000        | 2.66    | 2     | PKM 840 15 PG | 400        | 3000        | 3.32    | 2   |       |  |
| PKM 845 12 PG | 450        | 3000        | 2.76    | 2     | PKM 845 15 PG | 450        | 3000        | 3.44    | 2   |       |  |
| PKM 850 12 PG | 500        | 3000        | 2.85    | 2     | PKM 850 15 PG | 500        | 3000        | 3.57    | 2   |       |  |
| PKM 860 12 PG | 600        | 3000        | 3.05    | 2     | PKM 860 15 PG | 600        | 3000        | 3.82    | 2   |       |  |

## Cable Ladder

Kablo Merdiveni - Кабельросты (Лестничные лотки)



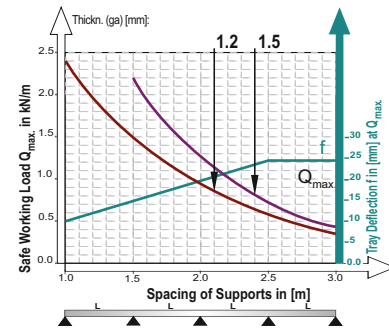
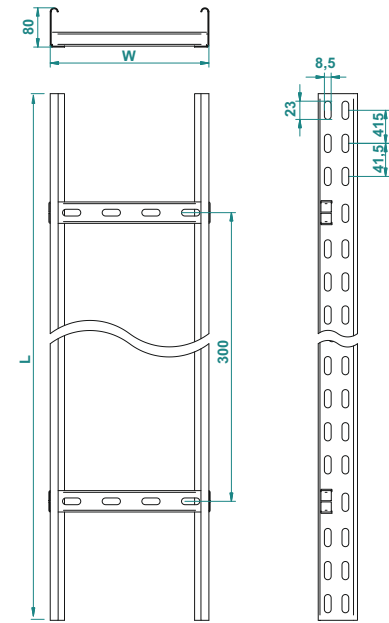
### Integrated Type

**Important!**  
To install cable ladder - straight use Screw Sets CFS M6 or CFS M8

### Pre - Galvanised

| FKM ...       |            | H80...      |         | 1.2mm |               | FKM ...    |             | H80...  |     | 1.5mm |  |
|---------------|------------|-------------|---------|-------|---------------|------------|-------------|---------|-----|-------|--|
| CODE          | Width W mm | Length L mm | kg 1 mt | pcs   | CODE          | Width W mm | Length L mm | kg 1 mt | pcs |       |  |
| FKM 810 12 PG | 100        | 3000        | 2.06    | 2     | FKM 815 15 PG | 100        | 3000        | 2.58    | 2   |       |  |
| FKM 815 12 PG | 150        | 3000        | 2.16    | 2     | FKM 815 15 PG | 150        | 3000        | 2.70    | 2   |       |  |
| FKM 820 12 PG | 200        | 3000        | 2.26    | 2     | FKM 820 15 PG | 200        | 3000        | 2.83    | 2   |       |  |
| FKM 825 12 PG | 250        | 3000        | 2.36    | 2     | FKM 825 15 PG | 250        | 3000        | 2.95    | 2   |       |  |
| FKM 830 12 PG | 300        | 3000        | 2.46    | 2     | FKM 830 15 PG | 300        | 3000        | 3.07    | 2   |       |  |
| FKM 840 12 PG | 400        | 3000        | 2.66    | 2     | FKM 840 15 PG | 400        | 3000        | 3.32    | 2   |       |  |
| FKM 845 12 PG | 450        | 3000        | 2.76    | 2     | FKM 845 15 PG | 450        | 3000        | 3.44    | 2   |       |  |
| FKM 850 12 PG | 500        | 3000        | 2.85    | 2     | FKM 850 15 PG | 500        | 3000        | 3.57    | 2   |       |  |
| FKM 860 12 PG | 600        | 3000        | 3.05    | 2     | FKM 860 15 PG | 600        | 3000        | 3.82    | 2   |       |  |

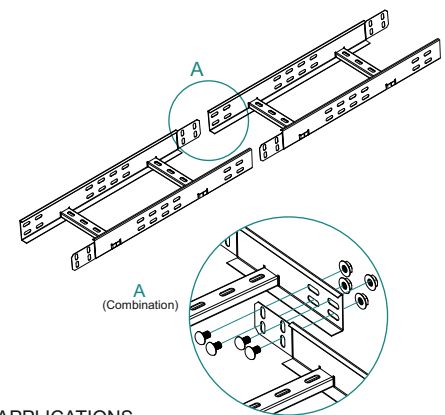
### PKM H80



| Width | Usable Cross-Section |
|-------|----------------------|
| 50    | 28 cm <sup>2</sup>   |
| 100   | 58 cm <sup>2</sup>   |
| 150   | 88 cm <sup>2</sup>   |
| 200   | 118 cm <sup>2</sup>  |
| 300   | 178 cm <sup>2</sup>  |
| 400   | 238 cm <sup>2</sup>  |
| 500   | 298 cm <sup>2</sup>  |
| 600   | 358 cm <sup>2</sup>  |

### FKM H80

Quick Fixing Method (without coupler)



**APPLICATIONS**  
Cable routing

**MATERIAL**  
Steel, strip-galv. acc. to the Sendzimir method to TS-EN 10346:2011 (PG)

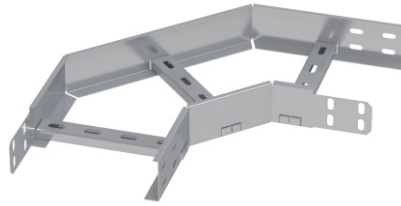
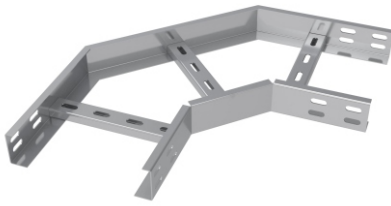
Available finishes:

HDG-steel, hot-dip galv. to TS-EN ISO 1461:2011 (HDG)  
SS- stainless steel AISI 304L and AISI 316L (SS)  
EP- powder coating in a full range of colours (RAL)

Thickn. (ga) [mm]: 1.2 | 1.5

## 90° Horizontal Bend of Cable Ladder

90° Merdiven Yatay Dönüş Elemanı - Угол кабельроста горизонтальный 90°



### Integrated Type

**Important!**  
Joining cable tray sections together only through the use of couplers and Screw Sets CFS M6 or CFS M8

**Important!**  
To instal cable tray - bend use Screw Sets CFS M6 OR CFS M8

### Pre - Galvanised

| PM90 ...       | H80...      | 1.2mm   |     |  |
|----------------|-------------|---------|-----|--|
| CODE           | Width W a=b | kg 1 pc | pcs |  |
| PM90 810 12 PG | 100         | 1.08    | 1   |  |
| PM90 815 12 PG | 150         | 1.27    | 1   |  |
| PM90 820 12 PG | 200         | 1.46    | 1   |  |
| PM90 825 12 PG | 250         | 1.65    | 1   |  |
| PM90 830 12 PG | 300         | 1.85    | 1   |  |
| PM90 840 12 PG | 400         | 2.23    | 1   |  |
| PM90 845 12 PG | 450         | 2.43    | 1   |  |
| PM90 850 12 PG | 500         | 2.62    | 1   |  |
| PM90 860 12 PG | 600         | 3.00    | 1   |  |

### Pre - Galvanised

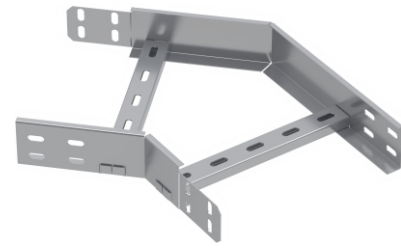
| MF90 ...       | H80...      | 1.2mm   |     |  |
|----------------|-------------|---------|-----|--|
| CODE           | Width W a=b | kg 1 pc | pcs |  |
| MF90 810 12 PG | 100         | 1.08    | 1   |  |
| MF90 815 12 PG | 150         | 1.27    | 1   |  |
| MF90 820 12 PG | 200         | 1.46    | 1   |  |
| MF90 825 12 PG | 250         | 1.65    | 1   |  |
| MF90 830 12 PG | 300         | 1.85    | 1   |  |
| MF90 840 12 PG | 400         | 2.23    | 1   |  |
| MF90 845 12 PG | 450         | 2.43    | 1   |  |
| MF90 850 12 PG | 500         | 2.62    | 1   |  |
| MF90 860 12 PG | 600         | 3.00    | 1   |  |

|                |             | 1.5mm   |     |  |
|----------------|-------------|---------|-----|--|
| CODE           | Width W a=b | kg 1 pc | pcs |  |
| PM90 810 15 PG | 100         | 1.35    | 1   |  |
| PM90 815 15 PG | 150         | 1.58    | 1   |  |
| PM90 820 15 PG | 200         | 1.83    | 1   |  |
| PM90 825 15 PG | 250         | 2.07    | 1   |  |
| PM90 830 15 PG | 300         | 2.31    | 1   |  |
| PM90 840 15 PG | 400         | 2.79    | 1   |  |
| PM90 845 15 PG | 450         | 3.04    | 1   |  |
| PM90 850 15 PG | 500         | 3.27    | 1   |  |
| PM90 860 15 PG | 600         | 3.76    | 1   |  |

|                |             | 1.5mm   |     |  |
|----------------|-------------|---------|-----|--|
| CODE           | Width W a=b | kg 1 pc | pcs |  |
| MF90 810 15 PG | 100         | 1.35    | 1   |  |
| MF90 815 15 PG | 150         | 1.58    | 1   |  |
| MF90 820 15 PG | 200         | 1.83    | 1   |  |
| MF90 825 15 PG | 250         | 2.07    | 1   |  |
| MF90 830 15 PG | 300         | 2.31    | 1   |  |
| MF90 840 15 PG | 400         | 2.79    | 1   |  |
| MF90 845 15 PG | 450         | 3.04    | 1   |  |
| MF90 850 15 PG | 500         | 3.27    | 1   |  |
| MF90 860 15 PG | 600         | 3.76    | 1   |  |

## 45° Horizontal Bend of Cable Ladder

45° Merdiven Yatay Dönüş Elemanı - Угол кабельроста горизонтальный 45°



### Integrated Type

**Important!**  
Joining cable tray sections together only through the use of couplers and Screw Sets CFS M6 or CFS M8

**Important!**  
To instal cable tray - bend use Screw Sets CFS M6 OR CFS M8

### Pre - Galvanised

| PM45 ...       | H80...      | 1.2mm   |     |  |
|----------------|-------------|---------|-----|--|
| CODE           | Width W a=b | kg 1 pc | pcs |  |
| PM45 810 12 PG | 100         | 0.96    | 1   |  |
| PM45 815 12 PG | 150         | 1.08    | 1   |  |
| PM45 820 12 PG | 200         | 1.19    | 1   |  |
| PM45 825 12 PG | 250         | 1.30    | 1   |  |
| PM45 830 12 PG | 300         | 1.42    | 1   |  |
| PM45 840 12 PG | 400         | 1.64    | 1   |  |
| PM45 845 12 PG | 450         | 1.75    | 1   |  |
| PM45 850 12 PG | 500         | 1.86    | 1   |  |
| PM45 860 12 PG | 600         | 2.08    | 1   |  |

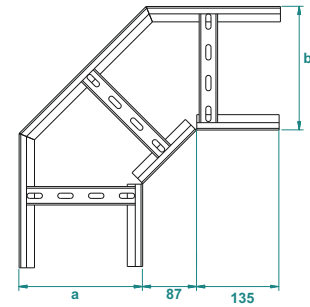
### Pre - Galvanised

| MF45 ...       | H80...      | 1.2mm   |     |  |
|----------------|-------------|---------|-----|--|
| CODE           | Width W a=b | kg 1 pc | pcs |  |
| MF45 810 12 PG | 100         | 0.96    | 1   |  |
| MF45 815 12 PG | 150         | 1.08    | 1   |  |
| MF45 820 12 PG | 200         | 1.19    | 1   |  |
| MF45 825 12 PG | 250         | 1.30    | 1   |  |
| MF45 830 12 PG | 300         | 1.42    | 1   |  |
| MF45 840 12 PG | 400         | 1.64    | 1   |  |
| MF45 845 12 PG | 450         | 1.75    | 1   |  |
| MF45 850 12 PG | 500         | 1.86    | 1   |  |
| MF45 860 12 PG | 600         | 2.08    | 1   |  |

|                |             | 1.5mm   |     |  |
|----------------|-------------|---------|-----|--|
| CODE           | Width W a=b | kg 1 pc | pcs |  |
| PM45 810 15 PG | 100         | 1.21    | 1   |  |
| PM45 815 15 PG | 150         | 1.35    | 1   |  |
| PM45 820 15 PG | 200         | 1.49    | 1   |  |
| PM45 825 15 PG | 250         | 1.63    | 1   |  |
| PM45 830 15 PG | 300         | 1.77    | 1   |  |
| PM45 840 15 PG | 400         | 2.04    | 1   |  |
| PM45 845 15 PG | 450         | 2.19    | 1   |  |
| PM45 850 15 PG | 500         | 2.33    | 1   |  |
| PM45 860 15 PG | 600         | 2.60    | 1   |  |

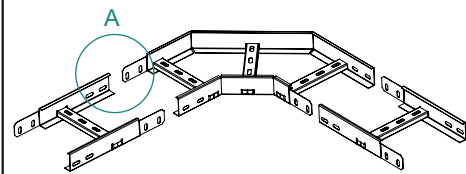
|                |             | 1.5mm   |     |  |
|----------------|-------------|---------|-----|--|
| CODE           | Width W a=b | kg 1 pc | pcs |  |
| MF45 810 15 PG | 100         | 1.21    | 1   |  |
| MF45 815 15 PG | 150         | 1.35    | 1   |  |
| MF45 820 15 PG | 200         | 1.49    | 1   |  |
| MF45 825 15 PG | 250         | 1.63    | 1   |  |
| MF45 830 15 PG | 300         | 1.77    | 1   |  |
| MF45 840 15 PG | 400         | 2.04    | 1   |  |
| MF45 845 15 PG | 450         | 2.19    | 1   |  |
| MF45 850 15 PG | 500         | 2.33    | 1   |  |
| MF45 860 15 PG | 600         | 2.60    | 1   |  |

### PM90 H80

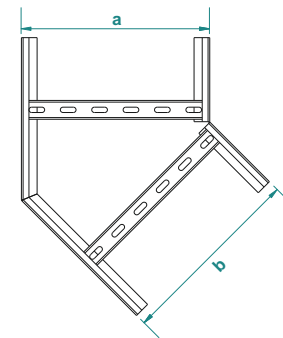


### MF90 H80

Quick Fixing Method (without coupler)

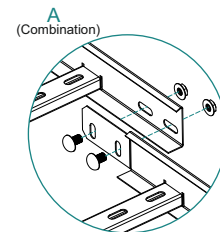
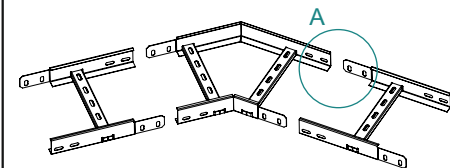


### PM45 H50



### MF45 H80

Quick Fixing Method (without coupler)



### APPLICATIONS

Cable routing

### MATERIAL

Steel, strip-galv. acc. to the Sendzimir method to TS-EN 10346:2011 (PG)

Available finishes:

HDG-steel, hot-dip galv. to TS-EN ISO 1461:2011 (HDG)

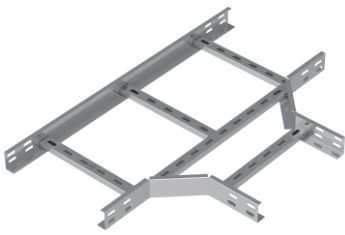
SS- stainless steel AISI 304L and AISI 316L (SS)

EP- powder coating in a full range of colours (RAL)

Thickn. (ga) [mm]: **1.2 | 1.5**

## Tee Horizontal Bend of Cable Ladder

"T" Merdiven Yatay Dönüş Elemanı - T-отвод кабельроста горизонтальный



**Important!**  
Joining cable tray sections together only through the use of couplers and Screw Sets CFS M6 or CFS M8

### Integrated Type

**Important!**  
To instal cable tray - bend use Screw Sets CFS M6 OR CFS M8

### Pre - Galvanised

| PMT ...       | H80...           | 1.2mm      |     |  |
|---------------|------------------|------------|-----|--|
| CODE          | Width W<br>a=b=c | kg<br>1 pc | pcs |  |
| PMT 810 12 PG | 100              | 1.37       | 1   |  |
| PMT 815 12 PG | 150              | 1.54       | 1   |  |
| PMT 820 12 PG | 200              | 1.70       | 1   |  |
| PMT 825 12 PG | 250              | 2.11       | 1   |  |
| PMT 830 12 PG | 300              | 2.30       | 1   |  |
| PMT 840 12 PG | 400              | 2.99       | 1   |  |
| PMT 845 12 PG | 450              | 3.23       | 1   |  |
| PMT 850 12 PG | 500              | 3.46       | 1   |  |
| PMT 860 12 PG | 600              | 3.92       | 1   |  |

|               |                  | 1.5mm      |     |  |
|---------------|------------------|------------|-----|--|
| CODE          | Width W<br>a=b=c | kg<br>1 pc | pcs |  |
| PMT 810 15 PG | 100              | 1.66       | 1   |  |
| PMT 815 15 PG | 150              | 1.84       | 1   |  |
| PMT 820 15 PG | 200              | 1.2        | 1   |  |
| PMT 825 15 PG | 250              | 2.44       | 1   |  |
| PMT 830 15 PG | 300              | 2.64       | 1   |  |
| PMT 840 15 PG | 400              | 3.35       | 1   |  |
| PMT 845 15 PG | 450              | 3.60       | 1   |  |
| PMT 850 15 PG | 500              | 3.84       | 1   |  |
| PMT 860 15 PG | 600              | 4.32       | 1   |  |

### Pre - Galvanised

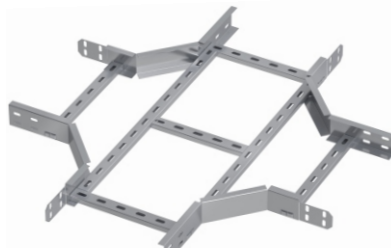
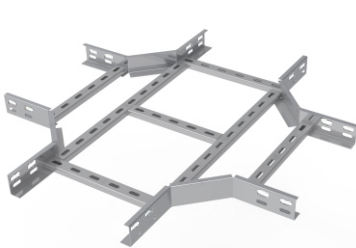
| MFT ...       | H80...           | 1.2mm      |     |  |
|---------------|------------------|------------|-----|--|
| CODE          | Width W<br>a=b=c | kg<br>1 pc | pcs |  |
| MFT 810 12 PG | 100              | 1.37       | 1   |  |
| MFT 815 12 PG | 150              | 1.54       | 1   |  |
| MFT 820 12 PG | 200              | 1.70       | 1   |  |
| MFT 825 12 PG | 250              | 2.11       | 1   |  |
| MFT 830 12 PG | 300              | 2.30       | 1   |  |
| MFT 840 12 PG | 400              | 2.99       | 1   |  |
| MFT 845 12 PG | 450              | 3.23       | 1   |  |
| MFT 850 12 PG | 500              | 3.46       | 1   |  |
| MFT 860 12 PG | 600              | 3.92       | 1   |  |

|               |                  | 1.5mm      |     |  |
|---------------|------------------|------------|-----|--|
| CODE          | Width W<br>a=b=c | kg<br>1 pc | pcs |  |
| MFT 810 15 PG | 100              | 1.66       | 1   |  |
| MFT 815 15 PG | 150              | 1.84       | 1   |  |
| MFT 820 15 PG | 200              | 1.2        | 1   |  |
| MFT 825 15 PG | 250              | 2.44       | 1   |  |
| MFT 830 15 PG | 300              | 2.64       | 1   |  |
| MFT 840 15 PG | 400              | 3.35       | 1   |  |
| MFT 845 15 PG | 450              | 3.60       | 1   |  |
| MFT 850 15 PG | 500              | 3.84       | 1   |  |
| MFT 860 15 PG | 600              | 4.32       | 1   |  |

## Cross Bend of Cable Ladder

Dörtlü Merdiven Dönüş Elemanı - Крестовина кабельроста



**Important!**  
Joining cable tray sections together only through the use of couplers and Screw Sets CFS M6 or CFS M8

### Integrated Type

**Important!**  
To instal cable tray - bend use Screw Sets CFS M6 OR CFS M8

### Pre - Galvanised

| PMD...        | H80...             | 1.2mm      |     |  |
|---------------|--------------------|------------|-----|--|
| CODE          | Width W<br>a=b=c=d | kg<br>1 pc | pcs |  |
| PMD 810 12 PG | 100                | 1.67       | 1   |  |
| PMD 815 12 PG | 150                | 1.82       | 1   |  |
| PMD 820 12 PG | 200                | 1.97       | 1   |  |
| PMD 825 12 PG | 250                | 2.38       | 1   |  |
| PMD 830 12 PG | 300                | 2.56       | 1   |  |
| PMD 840 12 PG | 400                | 2.93       | 1   |  |
| PMD 845 12 PG | 450                | 3.53       | 1   |  |
| PMD 850 12 PG | 500                | 3.75       | 1   |  |
| PMD 860 12 PG | 600                | 4.19       | 1   |  |

|               |                    | 1.5mm      |     |  |
|---------------|--------------------|------------|-----|--|
| CODE          | Width W<br>a=b=c=d | kg<br>1 pc | pcs |  |
| PMD 810 15 PG | 100                | 2.02       | 1   |  |
| PMD 815 15 PG | 150                | 2.17       | 1   |  |
| PMD 820 15 PG | 200                | 2.32       | 1   |  |
| PMD 825 15 PG | 250                | 2.73       | 1   |  |
| PMD 830 15 PG | 300                | 2.91       | 1   |  |
| PMD 840 15 PG | 400                | 3.29       | 1   |  |
| PMD 845 15 PG | 450                | 3.88       | 1   |  |
| PMD 850 15 PG | 500                | 4.10       | 1   |  |
| PMD 860 15 PG | 600                | 4.55       | 1   |  |

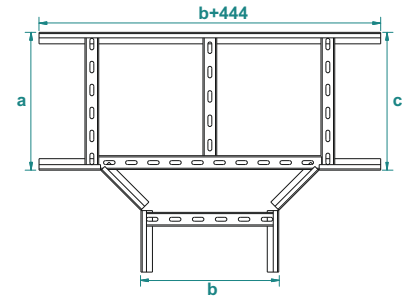
### Pre - Galvanised

| MFD...        | H80...             | 1.2mm      |     |  |
|---------------|--------------------|------------|-----|--|
| CODE          | Width W<br>a=b=c=d | kg<br>1 pc | pcs |  |
| MFD 810 12 PG | 100                | 1.67       | 1   |  |
| MFD 815 12 PG | 150                | 1.82       | 1   |  |
| MFD 820 12 PG | 200                | 1.97       | 1   |  |
| MFD 825 12 PG | 250                | 2.38       | 1   |  |
| MFD 830 12 PG | 300                | 2.56       | 1   |  |
| MFD 840 12 PG | 400                | 2.93       | 1   |  |
| MFD 845 12 PG | 450                | 3.53       | 1   |  |
| MFD 850 12 PG | 500                | 3.75       | 1   |  |
| MFD 860 12 PG | 600                | 4.19       | 1   |  |

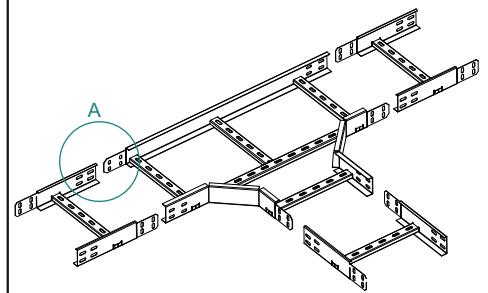
|               |                    | 1.5mm      |     |  |
|---------------|--------------------|------------|-----|--|
| CODE          | Width W<br>a=b=c=d | kg<br>1 pc | pcs |  |
| MFD 810 15 PG | 100                | 2.02       | 1   |  |
| MFD 815 15 PG | 150                | 2.17       | 1   |  |
| MFD 820 15 PG | 200                | 2.32       | 1   |  |
| MFD 825 15 PG | 250                | 2.73       | 1   |  |
| MFD 830 15 PG | 300                | 2.91       | 1   |  |
| MFD 840 15 PG | 400                | 3.29       | 1   |  |
| MFD 845 15 PG | 450                | 3.88       | 1   |  |
| MFD 850 15 PG | 500                | 4.10       | 1   |  |
| MFD 860 15 PG | 600                | 4.55       | 1   |  |

### PMT H80

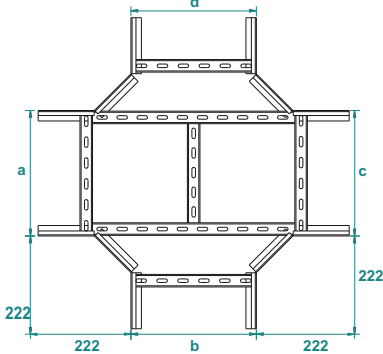


### MFT H80

Quick Fixing Method (without coupler)

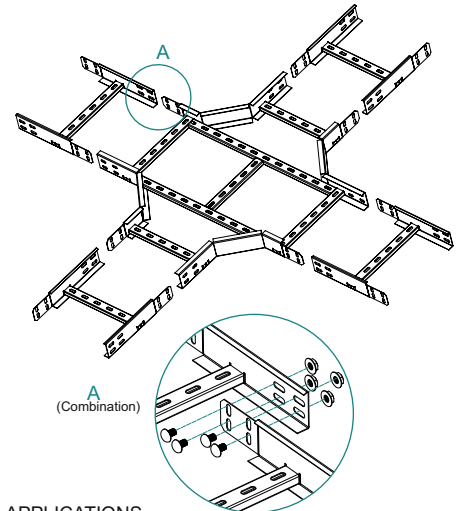


### PMD H80



### MFD H80

Quick Fixing Method (without coupler)



**APPLICATIONS**  
Cable routing

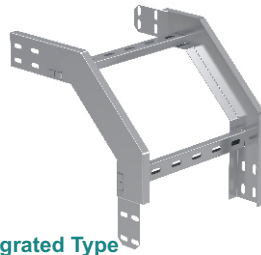
**MATERIAL**  
Steel, strip-galv. acc. to the Sendzimir method to TS-EN 10346:2011 (PG)

Available finishes:  
HDG-steel, hot-dip galv. to TS-EN ISO 1461:2011 (HDG)  
SS- stainless steel AISI 304L and AISI 316L (SS)  
EP- powder coating in a full range of colours (RAL)

Thickn. (ga) [mm]: 1.2 | 1.5

## Vertical 90° Outside Bend of Cable Ladder (Stable)

90° Dikey Merdiven Dış Bükey Elemanı - (Sabit) - Арка фиксированная кабельроста, внешняя 90°



### Integrated Type

**Important!**  
Joining cable tray sections together only through the use of couplers and Screw Sets CFS M6 or CFS M8

**Important!**  
To instal cable tray - bend use Screw Sets CFS M6 OR CFS M8

### Pre - Galvanised

| PMDS ...       | H80...          | 1.2mm      |     |  |
|----------------|-----------------|------------|-----|--|
| CODE           | Width W<br>a mm | kg<br>1 pc | pcs |  |
| PMDS 810 12 PG | 100             | 1.29       | 1   |  |
| PMDS 815 12 PG | 150             | 1.38       | 1   |  |
| PMDS 820 12 PG | 200             | 1.47       | 1   |  |
| PMDS 825 12 PG | 250             | 1.56       | 1   |  |
| PMDS 830 12 PG | 300             | 1.65       | 1   |  |
| PMDS 840 12 PG | 400             | 2.11       | 1   |  |
| PMDS 845 12 PG | 450             | 2.20       | 1   |  |
| PMDS 850 12 PG | 500             | 2.29       | 1   |  |
| PMDS 860 12 PG | 600             | 2.46       | 1   |  |

### Pre - Galvanised

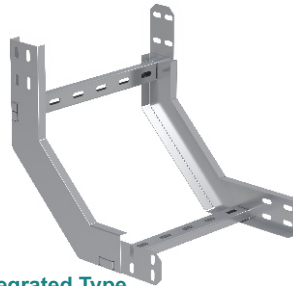
| MFDS ...       | H80...          | 1.2mm      |     |  |
|----------------|-----------------|------------|-----|--|
| CODE           | Width W<br>a mm | kg<br>1 pc | pcs |  |
| MFDS 810 12 PG | 100             | 1.29       | 1   |  |
| MFDS 815 12 PG | 150             | 1.38       | 1   |  |
| MFDS 820 12 PG | 200             | 1.47       | 1   |  |
| MFDS 825 12 PG | 250             | 1.56       | 1   |  |
| MFDS 830 12 PG | 300             | 1.65       | 1   |  |
| MFDS 840 12 PG | 400             | 2.11       | 1   |  |
| MFDS 845 12 PG | 450             | 2.20       | 1   |  |
| MFDS 850 12 PG | 500             | 2.29       | 1   |  |
| MFDS 860 12 PG | 600             | 2.46       | 1   |  |

| PMDS ...       | H80...          | 1.5mm      |     |  |
|----------------|-----------------|------------|-----|--|
| CODE           | Width W<br>a mm | kg<br>1 pc | pcs |  |
| PMDS 810 15 PG | 100             | 1.62       | 1   |  |
| PMDS 815 15 PG | 150             | 1.73       | 1   |  |
| PMDS 820 15 PG | 200             | 1.84       | 1   |  |
| PMDS 825 15 PG | 250             | 1.95       | 1   |  |
| PMDS 830 15 PG | 300             | 2.06       | 1   |  |
| PMDS 840 15 PG | 400             | 2.64       | 1   |  |
| PMDS 845 15 PG | 450             | 2.75       | 1   |  |
| PMDS 850 15 PG | 500             | 2.86       | 1   |  |
| PMDS 860 15 PG | 600             | 3.08       | 1   |  |

| MFDS ...       | H80...          | 1.5mm      |     |  |
|----------------|-----------------|------------|-----|--|
| CODE           | Width W<br>a mm | kg<br>1 pc | pcs |  |
| MFDS 810 15 PG | 100             | 1.62       | 1   |  |
| MFDS 815 15 PG | 150             | 1.73       | 1   |  |
| MFDS 820 15 PG | 200             | 1.84       | 1   |  |
| MFDS 825 15 PG | 250             | 1.95       | 1   |  |
| MFDS 830 15 PG | 300             | 2.06       | 1   |  |
| MFDS 840 15 PG | 400             | 2.64       | 1   |  |
| MFDS 845 15 PG | 450             | 2.75       | 1   |  |
| MFDS 850 15 PG | 500             | 2.86       | 1   |  |
| MFDS 860 15 PG | 600             | 3.08       | 1   |  |

## Vertical 90° Inside Bend of Cable Ladder (Stable)

90° Dikey Merdiven İç Bükey Elemanı - (Sabit) - Арка фиксированная кабельроста, внутренняя 90°



### Integrated Type

**Important!**  
Joining cable tray sections together only through the use of couplers and Screw Sets CFS M6 or CFS M8

**Important!**  
To instal cable tray - bend use Screw Sets CFS M6 OR CFS M8

### Pre - Galvanised

| PMIS...        | H80...          | 1.2mm      |     |  |
|----------------|-----------------|------------|-----|--|
| CODE           | Width W<br>a mm | kg<br>1 pc | pcs |  |
| PMIS 810 12 PG | 100             | 1.29       | 1   |  |
| PMIS 815 12 PG | 150             | 1.38       | 1   |  |
| PMIS 820 12 PG | 200             | 1.47       | 1   |  |
| PMIS 825 12 PG | 250             | 1.56       | 1   |  |
| PMIS 830 12 PG | 300             | 1.65       | 1   |  |
| PMIS 840 12 PG | 400             | 2.11       | 1   |  |
| PMIS 845 12 PG | 450             | 2.20       | 1   |  |
| PMIS 850 12 PG | 500             | 2.29       | 1   |  |
| PMIS 860 12 PG | 600             | 2.46       | 1   |  |

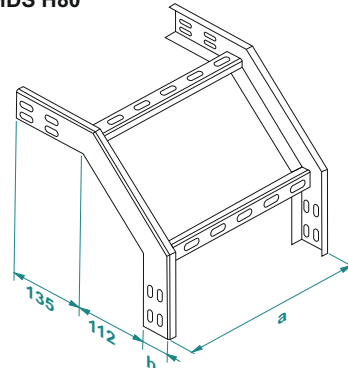
### Pre - Galvanised

| MFIS...        | H80...          | 1.2mm      |     |  |
|----------------|-----------------|------------|-----|--|
| CODE           | Width W<br>a mm | kg<br>1 pc | pcs |  |
| MFIS 810 12 PG | 100             | 1.29       | 1   |  |
| MFIS 815 12 PG | 150             | 1.38       | 1   |  |
| MFIS 820 12 PG | 200             | 1.47       | 1   |  |
| MFIS 825 12 PG | 250             | 1.56       | 1   |  |
| MFIS 830 12 PG | 300             | 1.65       | 1   |  |
| MFIS 840 12 PG | 400             | 2.11       | 1   |  |
| MFIS 845 12 PG | 450             | 2.20       | 1   |  |
| MFIS 850 12 PG | 500             | 2.29       | 1   |  |
| MFIS 860 12 PG | 600             | 2.46       | 1   |  |

| PMIS...        | H80...          | 1.5mm      |     |  |
|----------------|-----------------|------------|-----|--|
| CODE           | Width W<br>a mm | kg<br>1 pc | pcs |  |
| PMIS 810 15 PG | 100             | 1.62       | 1   |  |
| PMIS 815 15 PG | 150             | 1.73       | 1   |  |
| PMIS 820 15 PG | 200             | 1.84       | 1   |  |
| PMIS 825 15 PG | 250             | 1.95       | 1   |  |
| PMIS 830 15 PG | 300             | 2.06       | 1   |  |
| PMIS 840 15 PG | 400             | 2.64       | 1   |  |
| PMIS 845 15 PG | 450             | 2.75       | 1   |  |
| PMIS 850 15 PG | 500             | 2.86       | 1   |  |
| PMIS 860 15 PG | 600             | 3.08       | 1   |  |

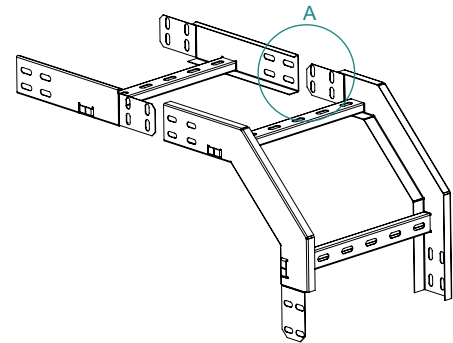
| MFIS...        | H80...          | 1.5mm      |     |  |
|----------------|-----------------|------------|-----|--|
| CODE           | Width W<br>a mm | kg<br>1 pc | pcs |  |
| MFIS 810 15 PG | 100             | 1.62       | 1   |  |
| MFIS 815 15 PG | 150             | 1.73       | 1   |  |
| MFIS 820 15 PG | 200             | 1.84       | 1   |  |
| MFIS 825 15 PG | 250             | 1.95       | 1   |  |
| MFIS 830 15 PG | 300             | 2.06       | 1   |  |
| MFIS 840 15 PG | 400             | 2.64       | 1   |  |
| MFIS 845 15 PG | 450             | 2.75       | 1   |  |
| MFIS 850 15 PG | 500             | 2.86       | 1   |  |
| MFIS 860 15 PG | 600             | 3.08       | 1   |  |

### PMDS H80

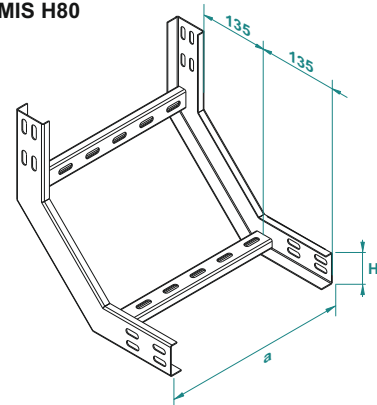


### MFDS H80

Quick Fixing Method (without coupler)

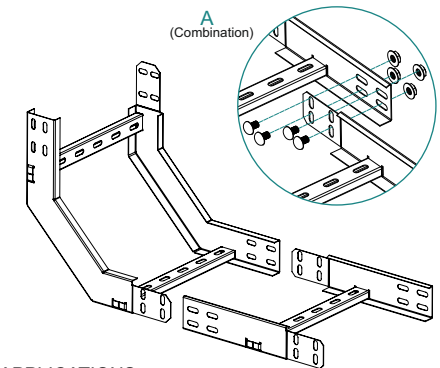


### PMIS H80



### MFIS H80

Quick Fixing Method (without coupler)



### APPLICATIONS

Cable routing

### MATERIAL

Steel, strip-galv. acc. to the Sendzimir method to TS-EN 10346:2011 (PG)

Available finishes:

HDG-steel, hot-dip galv. to TS-EN ISO 1461:2011 (HDG)  
SS- stainless steel AISI 304L and AISI 316L (SS)  
EP- powder coating in a full range of colours (RAL)

Thickn. (ga) [mm]: **1.2 1.5**

## Modular Adjustable Cable Ladder Riser

Modüler Merdiven İniş-Çıkış Elemanı - Шарнирный элемент дуги кабельроста

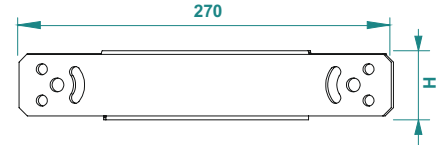
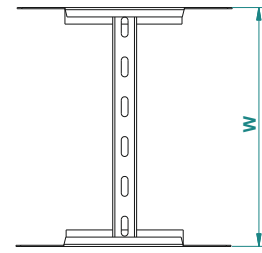


Important!  
To install cable tray - bend use Screw Sets CFS M6 or CFS M8

### Pre - Galvanised

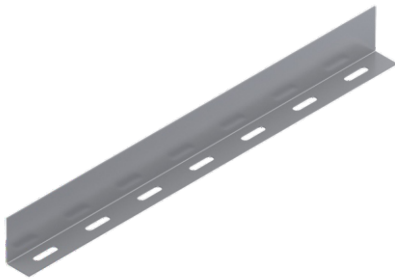
| PMMB ...       | H80...          | 1.2mm      |     |  | PMMB ...       | H80...          | 1.5mm      |     |  |
|----------------|-----------------|------------|-----|--|----------------|-----------------|------------|-----|--|
| CODE           | Width W<br>a mm | KG<br>1 pc | pcs |  | CODE           | Width W<br>a mm | KG<br>1 pc | pcs |  |
| PMMB 810 12 PG | 100             | 0.62       | 1   |  | PMMB 810 15 PG | 100             | 0.78       | 1   |  |
| PMMB 815 12 PG | 150             | 0.65       | 1   |  | PMMB 815 15 PG | 150             | 0.81       | 1   |  |
| PMMB 820 12 PG | 200             | 0.68       | 1   |  | PMMB 820 15 PG | 200             | 0.85       | 1   |  |
| PMMB 825 12 PG | 250             | 0.71       | 1   |  | PMMB 825 15 PG | 250             | 0.89       | 1   |  |
| PMMB 830 12 PG | 300             | 0.74       | 1   |  | PMMB 830 15 PG | 300             | 0.92       | 1   |  |
| PMMB 840 12 PG | 400             | 0.80       | 1   |  | PMMB 840 15 PG | 400             | 1.00       | 1   |  |
| PMMB 845 12 PG | 450             | 0.83       | 1   |  | PMMB 845 15 PG | 450             | 1.04       | 1   |  |
| PMMB 850 12 PG | 500             | 0.85       | 1   |  | PMMB 850 15 PG | 500             | 1.07       | 1   |  |
| PMMB 860 12 PG | 600             | 0.91       | 1   |  | PMMB 860 15 PG | 600             | 1.15       | 1   |  |

### PMMB H80



## Seperator

Seperatör - Перегородка

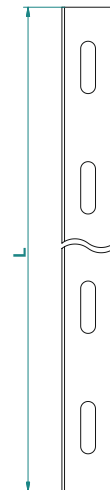
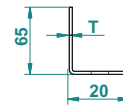


To Install Seperator use CFS bolts and nuts. ( M6 or M8 )

### Pre - Galvanised

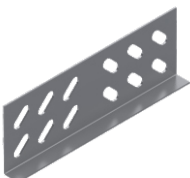
| SEP 1 ... H65 | 1.0mm          |          |     | SEP 1 ... H65 | 1.5mm          |          |     |
|---------------|----------------|----------|-----|---------------|----------------|----------|-----|
| CODE          | Length L<br>mm | KG<br>1m | pcs | CODE          | Length L<br>mm | KG<br>1m | pcs |
| SEP 165 10 PG | 3000           | 0.60     | 1   | SEP 165 15 PG | 3000           | 0.91     | 1   |

### SEP 1 H65



## Straight Connector (Coupler)

Birleştirme Elemanı - Прямой соединитель

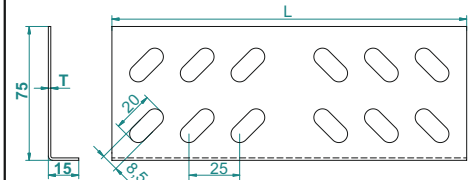


To Install one lenght ;use 2 pieces of KBE connector 8 sets of CFS bolts and nuts. (M6 or M8)

### Pre - Galvanised

| KBE 2 ... H80 | 1.2mm          |           |     | KBE 2 ... H80 | 1.5mm          |            |     |
|---------------|----------------|-----------|-----|---------------|----------------|------------|-----|
| CODE          | Length L<br>mm | KG<br>1pc | pcs | CODE          | Length L<br>mm | KG<br>1 pc | pcs |
| KBE 280 12 PG | 175            | 0.12      | 100 | KBE 280 15 PG | 0.15           | 0.11       | 100 |

### KBE 2 H80



M6x15 Round head squire neck bolt & M6 Flanged nut

### APPLICATIONS

Cable routing

### MATERIAL

Steel, strip-galv. acc. to the Sendzimir method to TS-EN 10346:2011 (PG)

Available finishes:

HDG-steel, hot-dip galv. to TS-EN ISO 1461:2011 (HDG)  
SS- stainless steel AISI 304L and AISI 316L (SS)  
EP- powder coating in a full range of colours (RAL)

Thickn. (ga) [mm]: 1.2 | 1.5

### Electro - Galvanized

| CFS M6    | M6         |                |            | CFS M8 | M8        |            |                |            |     |
|-----------|------------|----------------|------------|--------|-----------|------------|----------------|------------|-----|
| CODE      | Size<br>mm | Length L<br>mm | KG<br>1Set | pcs    | CODE      | Size<br>mm | Length L<br>mm | KG<br>1Set | pcs |
| CFS M6 EG | M6         | 15             | 0.008      | 500    | CFS M8 EG | M8         | 15             | 0.014      | 500 |