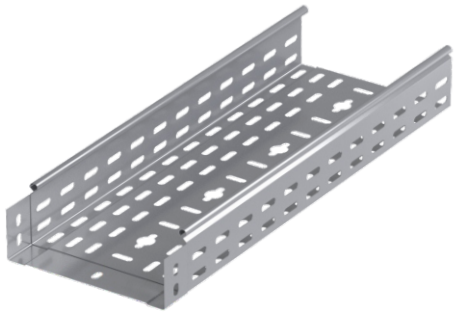


Integrated Perforated Cable Trays - Return Flanges

Geçmeli Tip Kablo Kanalı - Интегрированные Перфорированные лотки



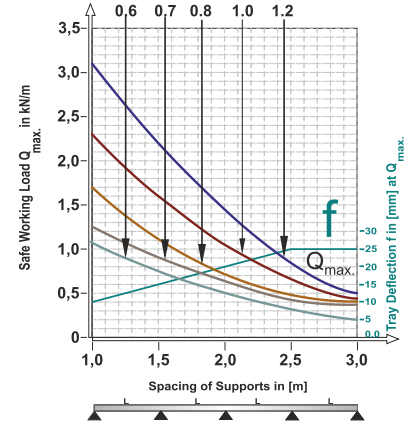
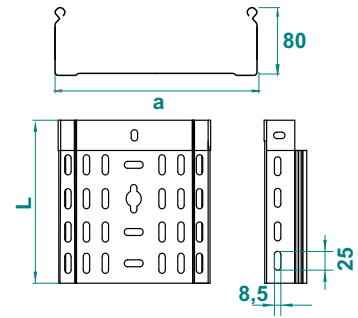
Important!
Joining cable tray sections together only use
Screw Sets CFS M6 or CFS M8

Pre - Galvanised

FPK ... H80		0.6mm			
CODE	Width a mm	Length L mm	kg 1 pc	pcs	
FPK 807 06 PG	75	3000	0.96	2	
FPK 810 06 PG	100	3000	1.05	2	
FPK 812 06 PG	125	3000	1.14	2	
FPK 815 06 PG	150	3000	1.24	2	
FPK 820 06 PG	200	3000	1.43	2	
		0.7mm			
FPK 807 07 PG	75	3000	1.12	2	
FPK 810 07 PG	100	3000	1.22	2	
FPK 812 07 PG	125	3000	1.34	2	
FPK 815 07 PG	150	3000	1.45	2	
FPK 820 07 PG	200	3000	1.66	2	
		0.8mm			
FPK 807 08 PG	75	3000	1.27	2	
FPK 810 08 PG	100	3000	1.39	2	
FPK 812 08 PG	125	3000	1.52	2	
FPK 815 08 PG	150	3000	1.65	2	
FPK 820 08 PG	200	3000	1.90	2	
FPK 822 08 PG	225	3000	2.02	2	
FPK 825 08 PG	250	3000	2.15	2	
FPK 830 08 PG	300	3000	2.40	2	

FPK ... H80		1.0mm			
CODE	Width a mm	Length L mm	kg 1 pc	pcs	
FPK 807 10 PG	75	3000	1.58	2	
FPK 810 10 PG	100	3000	1.74	2	
FPK 812 10 PG	125	3000	1.90	2	
FPK 815 10 PG	150	3000	2.05	2	
FPK 820 10 PG	200	3000	2.37	2	
FPK 822 10 PG	225	3000	2.52	2	
FPK 825 10 PG	250	3000	2.68	2	
FPK 830 10 PG	300	3000	2.99	2	
FPK 840 10 PG	400	3000	3.62	2	
FPK 845 10 PG	450	3000	3.77	2	
FPK 850 10 PG	500	3000	4.08	2	
FPK 860 10 PG	600	3000	4.68	2	
		1.2mm			
FPK 807 12 PG	75	3000	1.90	2	
FPK 810 12 PG	100	3000	2.08	2	
FPK 812 12 PG	120	3000	2.27	2	
FPK 815 12 PG	150	3000	2.46	2	
FPK 820 12 PG	200	3000	2.84	2	
FPK 822 12 PG	225	3000	3.02	2	
FPK 825 12 PG	250	3000	3.22	2	
FPK 830 12 PG	300	3000	3.59	2	
FPK 840 12 PG	400	3000	4.34	2	
FPK 845 12 PG	450	3000	4.72	2	
FPK 850 12 PG	500	3000	5.10	2	
FPK 860 12 PG	600	3000	5.85	2	

FPK H80



Width	Usable Cross-Section
50	38 cm ²
100	78 cm ²
150	118 cm ²
200	158 cm ²
300	238 cm ²
400	318 cm ²
500	398 cm ²
600	478 cm ²

This diagram comply with IEC 61537 with connection to 1/5 of the span and the end span = 0,8x the span
 Q = max. admissible load (kg/m)
 L = support distance (m)
 f = Deflection (mm) / Max. deflection = $L/100$
 Safety co-efficient = 1.5

APPLICATIONS

Cable routing

MATERIAL

Steel, strip-galv. acc. to the Sendzimir method to TS-EN 10346:2011 (PG)

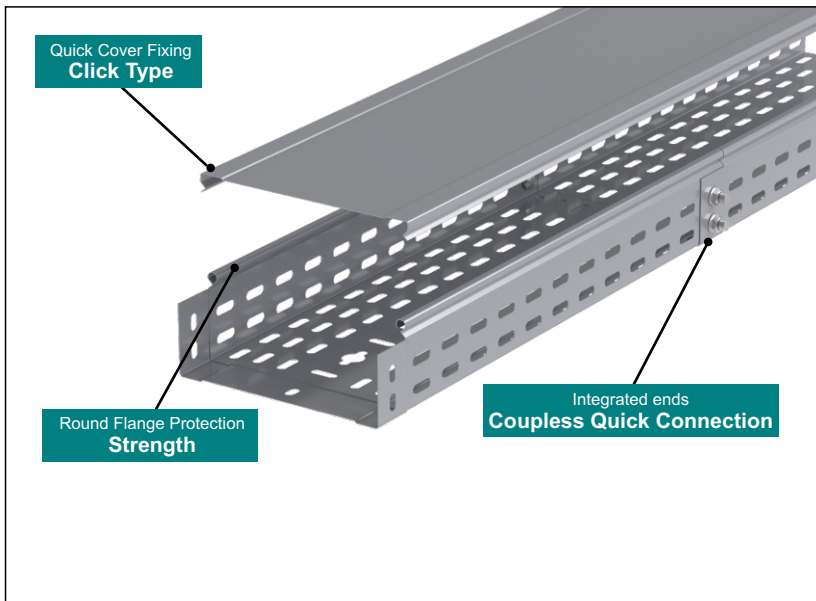
Available finishes:

HDG-steel, hot-dip galv. to TS-EN ISO 1461:2011 (HDG)

SS- stainless steel AISI 304L and AISI 316L (SS)

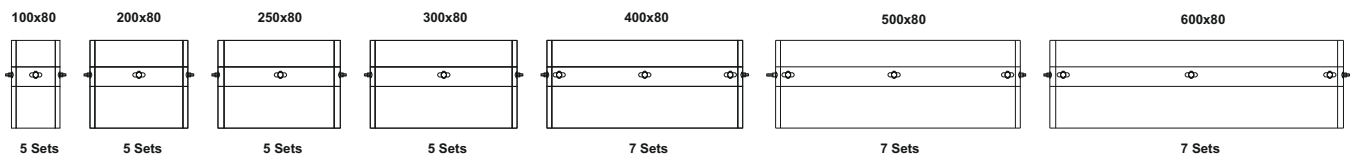
EP- powder coating in a full range of colours (RAL)

Thickn. (ga) [mm]: **0,6 | 0,8 | 1,0 | 1,2**



Recommended Quantities of Bolt and Nut For Integrated Cable Tray Connections

		Recommended Quantities of Bolt and Nut For Integrated Cable Tray Connections						
Width Of Cable Tray	W H	40	50	60	75	80	85	100
	Width Of Cable Tray	50	2 Sets	2 Sets	2 Sets	-	-	-
100		3 Sets	3 Sets	3 Sets	5 Sets	5 Sets	5 Sets	5 Sets
150		3 Sets	3 Sets	3 Sets	5 Sets	5 Sets	5 Sets	5 Sets
200		3 Sets	3 Sets	3 Sets	5 Sets	5 Sets	5 Sets	5 Sets
250		3 Sets	3 Sets	3 Sets	5 Sets	5 Sets	5 Sets	5 Sets
300		3 Sets	3 Sets	3 Sets	5 Sets	5 Sets	5 Sets	5 Sets
400		5 Sets	5 Sets	5 Sets	7 Sets	7 Sets	7 Sets	7 Sets
500		5 Sets	5 Sets	5 Sets	7 Sets	7 Sets	7 Sets	7 Sets
600	5 Sets	5 Sets	5 Sets	7 Sets	7 Sets	7 Sets	7 Sets	



Integrated Perforated Cable Trays - Return Flanges

Geçmeli Tip Kablo Kanalı - Интегрированные Перфорированные лотки

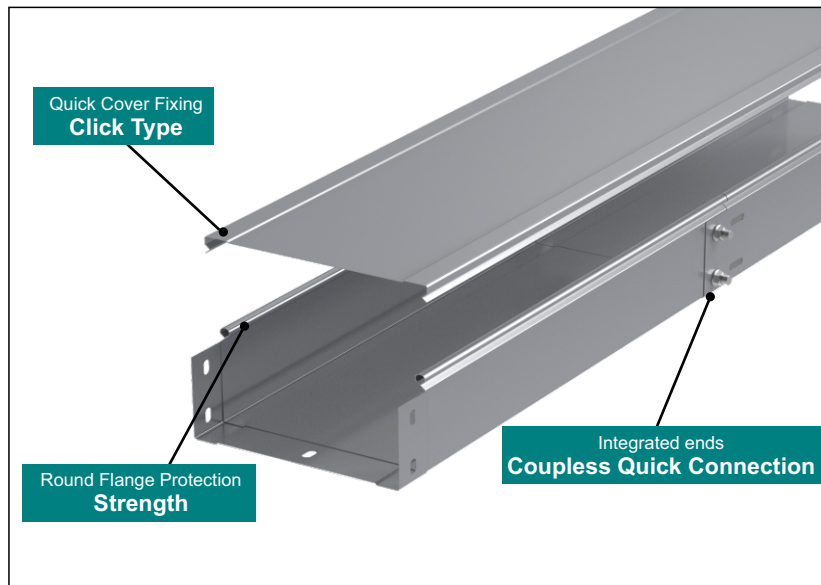


Important!
Joining cable tray sections together only use
Screw Sets CFS M6 or CFS M8

Pre - Galvanised

FDK ... H80		0.6mm		
CODE	Width a mm	Length L mm	kg 1 pc	pcs
FDK 807 06 PG	75	3000	0.96	2
FDK 810 06 PG	100	3000	1.05	2
FDK 812 06 PG	125	3000	1.14	2
FDK 815 06 PG	150	3000	1.24	2
FDK 820 06 PG	200	3000	1.43	2
FDK ... H80		0.7mm		
FDK 807 07 PG	75	3000	1.12	2
FDK 810 07 PG	100	3000	1.22	2
FDK 812 07 PG	125	3000	1.34	2
FDK 815 07 PG	150	3000	1.45	2
FDK 820 07 PG	200	3000	1.66	2
FDK ... H80		0.8mm		
FDK 807 08 PG	75	3000	1.27	2
FDK 810 08 PG	100	3000	1.39	2
FDK 812 08 PG	125	3000	1.52	2
FDK 815 08 PG	150	3000	1.65	2
FDK 820 08 PG	200	3000	1.90	2
FDK 822 08 PG	225	3000	2.02	2
FDK 825 08 PG	250	3000	2.15	2
FDK 830 08 PG	300	3000	2.40	2

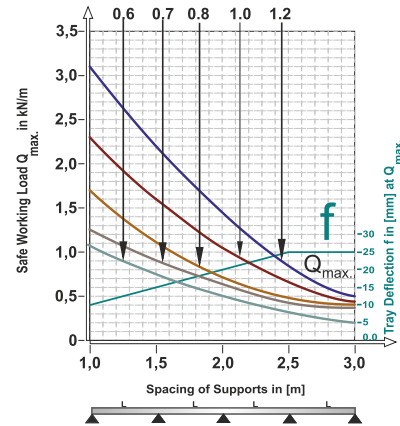
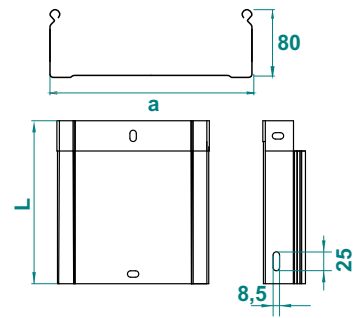
FDK ... H80		1.0mm		
CODE	Width a mm	Length L mm	kg 1 pc	pcs
FDK 807 10 PG	75	3000	1.58	2
FDK 810 10 PG	100	3000	1.74	2
FDK 812 10 PG	125	3000	1.90	2
FDK 815 10 PG	150	3000	2.05	2
FDK 820 10 PG	200	3000	2.37	2
FDK 822 10 PG	225	3000	2.52	2
FDK 825 10 PG	250	3000	2.68	2
FDK 830 10 PG	300	3000	2.99	2
FDK 840 10 PG	400	3000	3.62	2
FDK 845 10 PG	450	3000	3.77	2
FDK 850 10 PG	500	3000	4.08	2
FDK 860 10 PG	600	3000	4.68	2
FDK ... H80		1.2mm		
FDK 807 12 PG	75	3000	1.90	2
FDK 810 12 PG	100	3000	2.08	2
FDK 812 12 PG	120	3000	2.27	2
FDK 815 12 PG	150	3000	2.46	2
FDK 820 12 PG	200	3000	2.84	2
FDK 822 12 PG	225	3000	3.02	2
FDK 825 12 PG	250	3000	3.22	2
FDK 830 12 PG	300	3000	3.59	2
FDK 840 12 PG	400	3000	4.34	2
FDK 845 12 PG	450	3000	4.72	2
FDK 850 12 PG	500	3000	5.10	2
FDK 860 12 PG	600	3000	5.85	2



Recommended Quantities of Bolt and Nut For Integrated Cable Tray Connections

Width	100x80	200x80	250x80	300x80	400x80	500x80	600x80
100x80	5 Sets						
200x80		5 Sets					
250x80			5 Sets				
300x80				5 Sets			
400x80					7 Sets		
500x80						7 Sets	
600x80							7 Sets

FDK H80



Width	Usable Cross-Section
50	38 cm ²
100	73 cm ²
150	118 cm ²
200	158 cm ²
300	238 cm ²
400	318 cm ²
500	398 cm ²
600	478 cm ²

This diagram comply with IEC 61537 with connection to 1/5 of the span and the end span = 0,8x the span
Q = max. admissible load (kg/m)
L = support distance (m)
f = Deflection (mm) / Max. deflection = L/100
Safety co-efficient = 1.5

APPLICATIONS

Cable routing

MATERIAL

Steel, strip-galv. acc. to the Sendzimir method to TS-EN 10346:2011 (PG)

Available finishes:

HDG-steel, hot-dip galv. to TS-EN ISO 1461:2011 (HDG)

SS- stainless steel AISI 304L and AISI 316L (SS)

EP- powder coating in a full range of colours (RAL)

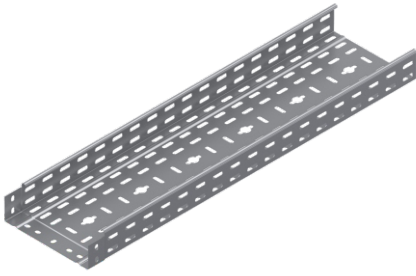
Thickn. (ga) [mm]: **0.6 | 0.8 | 1.0 | 1.2**

Recommended Quantities of Bolt and Nut For Integrated Cable Tray Connections

Width Of Cable Tray	W	H	40	50	60	75	80	85	100
			50	2 Sets	2 Sets	2 Sets	-	-	-
100	3 Sets	3 Sets	3 Sets	5 Sets	5 Sets	5 Sets	5 Sets		
150	3 Sets	3 Sets	3 Sets	5 Sets	5 Sets	5 Sets	5 Sets		
200	3 Sets	3 Sets	3 Sets	5 Sets	5 Sets	5 Sets	5 Sets		
250	3 Sets	3 Sets	3 Sets	5 Sets	5 Sets	5 Sets	5 Sets		
300	3 Sets	3 Sets	3 Sets	5 Sets	5 Sets	5 Sets	5 Sets		
400	5 Sets	5 Sets	5 Sets	7 Sets	7 Sets	7 Sets	7 Sets		
500	5 Sets	5 Sets	5 Sets	7 Sets	7 Sets	7 Sets	7 Sets		
600	5 Sets	5 Sets	5 Sets	7 Sets	7 Sets	7 Sets	7 Sets		

Integrated Perforated Cable Trays - Return Flanges

Geçmeli Tip Kablo Kanalı - Интегрированные Перфорированные лотки



Important!
Joining cable tray sections together only use
Screw Sets CFS M6 or CFS M8

Pre - Galvanised

GPK ... H80		0.6mm		KG	pcs
CODE	Width a mm	Length L mm	1 mt		
GPK 807 06 PG	75	3000	0.96	2	
GPK 810 06 PG	100	3000	1.05	2	
GPK 812 06 PG	125	3000	1.14	2	
GPK 815 06 PG	150	3000	1.24	2	
GPK 820 06 PG	200	3000	1.43	2	

GPK ... H80		0.7mm		KG	pcs
CODE	Width a mm	Length L mm	1 mt		
GPK 807 07 PG	75	3000	1.12	2	
GPK 810 07 PG	100	3000	1.22	2	
GPK 812 07 PG	125	3000	1.34	2	
GPK 815 07 PG	150	3000	1.45	2	
GPK 820 07 PG	200	3000	1.66	2	

GPK ... H80		0.8mm		KG	pcs
CODE	Width a mm	Length L mm	1 mt		
GPK 807 08 PG	75	3000	1.27	2	
GPK 810 08 PG	100	3000	1.39	2	
GPK 812 08 PG	125	3000	1.52	2	
GPK 815 08 PG	150	3000	1.65	2	
GPK 820 08 PG	200	3000	1.90	2	
GPK 822 08 PG	225	3000	2.02	2	
GPK 825 08 PG	250	3000	2.15	2	
GPK 830 08 PG	300	3000	2.40	2	

GPK ... H80		1.0mm		KG	pcs
CODE	Width a mm	Length L mm	1 mt		
GPK 807 10 PG	75	3000	1.58	2	
GPK 810 10 PG	100	3000	1.74	2	
GPK 812 10 PG	125	3000	1.90	2	
GPK 815 10 PG	150	3000	2.05	2	
GPK 820 10 PG	200	3000	2.37	2	
GPK 822 10 PG	225	3000	2.52	2	
GPK 825 10 PG	250	3000	2.68	2	
GPK 830 10 PG	300	3000	2.99	2	
GPK 840 10 PG	400	3000	3.62	2	

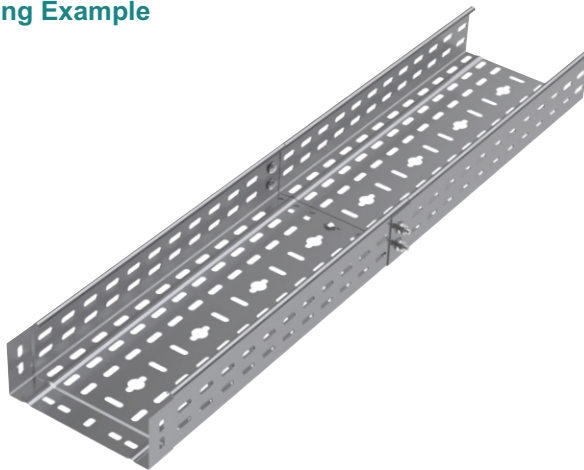
GPK ... H80		1.2mm		KG	pcs
CODE	Width a mm	Length L mm	1 mt		
GPK 807 12 PG	75	3000	1.90	2	
GPK 810 12 PG	100	3000	2.08	2	
GPK 812 12 PG	125	3000	2.27	2	
GPK 815 12 PG	150	3000	2.46	2	
GPK 820 12 PG	200	3000	2.84	2	
GPK 822 12 PG	225	3000	3.02	2	
GPK 825 12 PG	250	3000	3.22	2	
GPK 830 12 PG	300	3000	3.59	2	
GPK 840 12 PG	400	3000	4.34	2	
GPK 845 12 PG	450	3000	4.72	2	
GPK 850 12 PG	500	3000	5.10	2	
GPK 860 12 PG	600	3000	5.85	2	

GPK H80

This diagram comply with IEC 61537 with connection to 1/5 of the span and the end span = 0,8x the span
 Q = max. admissible load (kg/m)
 L = support distance (m)
 f = Deflection (mm) / Max. deflection = L/100
 Safety co-efficient = 1.5

Width	Usable Cross-Sector
50	38 cm ²
100	78 cm ²
150	118 cm ²
200	158 cm ²
300	238 cm ²
400	318 cm ²
500	398 cm ²
600	478 cm ²

Mounting Example



Recommended Quantities of Bolt and Nut For Integrated Cable Tray Connections

Width	Quantity
100x80	5 Sets
200x80	5 Sets
250x80	5 Sets
300x80	5 Sets
400x80	7 Sets
500x80	7 Sets
600x80	7 Sets

Width Of Cable Tray	Recommended Quantities of Bolt and Nut For Integrated Cable Tray Connections								
	W	H	40	50	60	75	80	85	100
50	2	2	2	2	2	2	2	2	2
100	3	3	3	3	3	3	3	3	3
150	3	3	3	3	3	3	3	3	3
200	3	3	3	3	3	3	3	3	3
250	3	3	3	3	3	3	3	3	3
300	3	3	3	3	3	3	3	3	3
400	5	5	5	5	5	5	5	5	5
500	5	5	5	5	5	5	5	5	5
600	5	5	5	5	5	5	5	5	5

Integrated Perforated Cable Trays - Return Flanges

Geçmeli Tip Kablo Kanalı - Интегрированные Перфорированные лотки



Important!
Joining cable tray sections together only use
Screw Sets CFS M6 or CFS M8

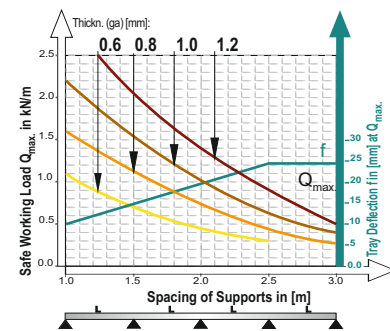
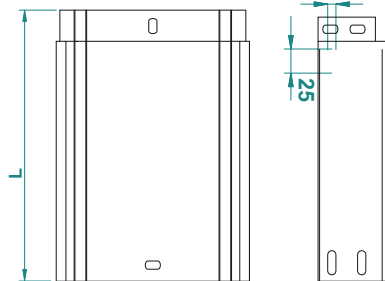
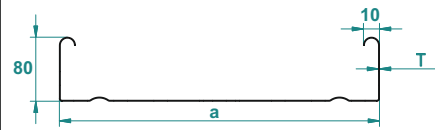
Pre - Galvanised

GDK ... H80					0.6mm
CODE	Width a mm	Length L mm	Kg 1 mt	pcs	
GDK 807 06 PG	75	3000	0.96	2	
GDK 810 06 PG	100	3000	1.05	2	
GDK 812 06 PG	125	3000	1.14	2	
GDK 815 06 PG	150	3000	1.24	2	
GDK 820 06 PG	200	3000	1.43	2	
GDK ... H80					1.0mm
CODE	Width a mm	Length L mm	Kg 1 mt	pcs	
GDK 807 10 PG	75	3000	1.58	2	
GDK 810 10 PG	100	3000	1.74	2	
GDK 812 10 PG	125	3000	1.90	2	
GDK 815 10 PG	150	3000	2.05	2	
GDK 820 10 PG	200	3000	2.37	2	
GDK 822 10 PG	225	3000	2.52	2	
GDK 825 10 PG	250	3000	2.68	2	
GDK 830 10 PG	300	3000	2.99	2	
GDK 840 10 PG	400	3000	3.62	2	
GDK ... H80					1.2mm
CODE	Width a mm	Length L mm	Kg 1 mt	pcs	
GDK 807 12 PG	75	3000	1.90	2	
GDK 810 12 PG	100	3000	2.08	2	
GDK 812 12 PG	125	3000	2.27	2	
GDK 815 12 PG	150	3000	2.46	2	
GDK 820 12 PG	200	3000	2.84	2	
GDK 822 12 PG	225	3000	3.02	2	
GDK 825 12 PG	250	3000	3.22	2	
GDK 830 12 PG	300	3000	3.59	2	
GDK 840 12 PG	400	3000	4.34	2	
GDK 845 12 PG	450	3000	4.72	2	
GDK 850 12 PG	500	3000	5.10	2	
GDK 860 12 PG	600	3000	5.85	2	

Mounting Example



GDK H80



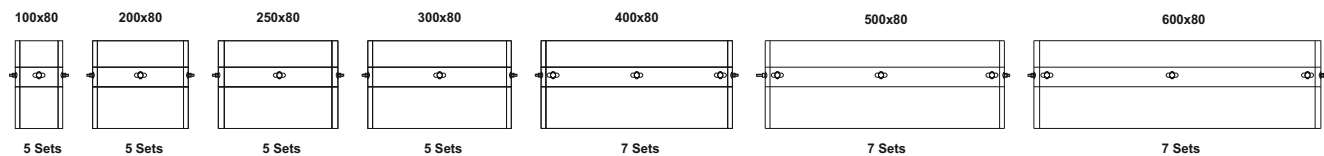
This diagram comply with IEC 61537 with connection to 1/5 of the span and the end span = 0,8x the span
 Q = max. admissible load (kg/m)
 L = support distance (m)
 f = Deflection (mm) / Max. deflection = L/100
 Safety co-efficient = 1.5

Width	Usable Cross-Section
50	38 cm ²
100	78 cm ²
150	118 cm ²
200	158 cm ²
300	238 cm ²
400	318 cm ²
500	398 cm ²
600	478 cm ²

Recommended Quantities of Bolt and Nut For Integrated Cable Tray Connections

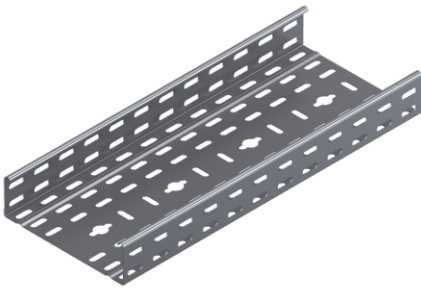
W	H	40	50	60	75	80	85	100
		50	2 Sets	2 Sets	2 Sets	-	-	-
100	3 Sets	3 Sets	3 Sets	5 Sets	5 Sets	5 Sets	5 Sets	
150	3 Sets	3 Sets	3 Sets	5 Sets	5 Sets	5 Sets	5 Sets	
200	3 Sets	3 Sets	3 Sets	5 Sets	5 Sets	5 Sets	5 Sets	
250	3 Sets	3 Sets	3 Sets	5 Sets	5 Sets	5 Sets	5 Sets	
300	3 Sets	3 Sets	3 Sets	5 Sets	5 Sets	5 Sets	5 Sets	
400	5 Sets	5 Sets	5 Sets	7 Sets	7 Sets	7 Sets	7 Sets	
500	5 Sets	5 Sets	5 Sets	7 Sets	7 Sets	7 Sets	7 Sets	
600	5 Sets	5 Sets	5 Sets	7 Sets	7 Sets	7 Sets	7 Sets	

Recommended Quantities of Bolt and Nut For Integrated Cable Tray Connections



Perforated Cable Trays - Return Flanges

Ağır Hizmet Kablo Kanalı - Перфорированные лотки



Important!
Joining cable tray sections together only through the use of couplers 2 pcs for 1 Length
To install cable tray - straight use Screw Sets CFS M6 or CFS M8

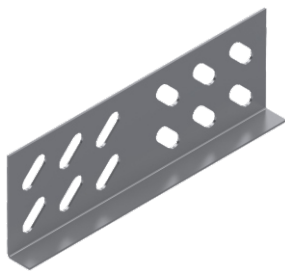
Pre - Galvanised

APK ... H80					0.6mm	
CODE	Width a mm	Length L mm	KG 1 mt	pcs		
APK 807 06 PG	75	3000	0.96	2		
APK 810 06 PG	100	3000	1.05	2		
APK 812 06 PG	125	3000	1.14	2		
APK 815 06 PG	150	3000	1.24	2		
APK 820 06 PG	200	3000	1.43	2		
					0.8mm	
APK 807 08 PG	75	3000	1.27	2		
APK 810 08 PG	100	3000	1.39	2		
APK 812 08 PG	125	3000	1.52	2		
APK 815 08 PG	150	3000	1.65	2		
APK 820 08 PG	200	3000	1.90	2		
APK 822 08 PG	225	3000	2.02	2		
APK 825 08 PG	250	3000	2.15	2		
APK 830 08 PG	300	3000	2.40	2		
					1.0mm	
APK 807 10 PG	75	3000	1.58	2		
APK 810 10 PG	100	3000	1.74	2		
APK 812 10 PG	125	3000	1.90	2		
APK 815 10 PG	150	3000	2.05	2		
APK 820 10 PG	200	3000	2.37	2		
APK 822 10 PG	225	3000	2.52	2		
APK 825 10 PG	250	3000	2.68	2		
APK 830 10 PG	300	3000	2.99	2		
APK 840 10 PG	400	3000	3.62	2		

APK ... H80					1.2mm	
CODE	Width a mm	Length L mm	KG 1 mt	pcs		
APK 807 12 PG	75	3000	1.90	2		
APK 810 12 PG	100	3000	2.08	2		
APK 812 12 PG	125	3000	2.27	2		
APK 815 12 PG	150	3000	2.46	2		
APK 820 12 PG	200	3000	2.84	2		
APK 822 12 PG	225	3000	3.02	2		
APK 825 12 PG	250	3000	3.22	2		
APK 830 12 PG	300	3000	3.59	2		
APK 840 12 PG	400	3000	4.34	2		
APK 845 12 PG	450	3000	4.72	2		
APK 850 12 PG	500	3000	5.10	2		
APK 860 12 PG	600	3000	5.85	2		
					1.5mm	
APK 807 15 PG	75	3000	2.35	2		
APK 810 15 PG	100	3000	2.58	2		
APK 812 15 PG	125	3000	2.82	2		
APK 815 15 PG	150	3000	3.06	2		
APK 820 15 PG	200	3000	3.53	2		
APK 822 15 PG	225	3000	3.76	2		
APK 825 15 PG	250	3000	4.00	2		
APK 830 15 PG	300	3000	4.47	2		
APK 840 15 PG	400	3000	5.41	2		
APK 845 15 PG	450	3000	5.88	2		
APK 850 15 PG	500	3000	6.35	2		
APK 860 15 PG	600	3000	7.30	2		

Straight Connector (Coupler)

Birleştirme Elemanı - Прямой соединитель



Pre - Galvanised

KBE 2 ... H80					1.0mm	
CODE	Length L mm	KG 1 pc	pcs			
KBE 280 10 PG	175	0.12	100			
					1.2mm	
KBE 280 12 PG	175	0.12	100			

To Install one lenght ;use 2 pieces of KBE connector 8 sets of CFS bolts and nuts. (M6 or M8)

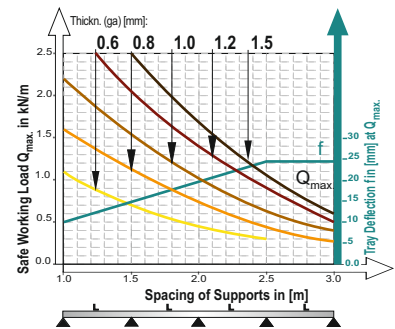
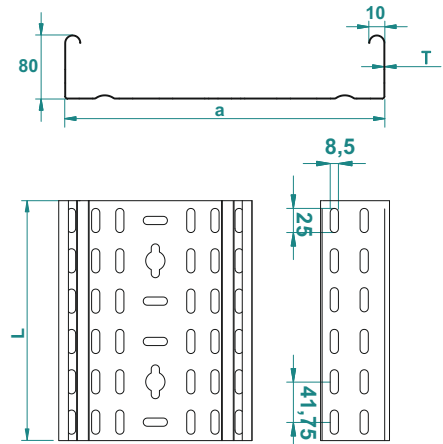
KBE 2 ... H80					1.5mm	
CODE	Length L mm	KG 1 pc	pcs			
KBE 280 15 PG	175	0.15	100			

Electro - Galvanized

CFS M6					M6	
CODE	Size mm	Length L mm	KG 1Set	pcs		
CFS M6 EG	M6	15	0,008	500		

CFS M8					M8	
CODE	Size mm	Length L mm	KG 1Set	pcs		
CFS M8 EG	M8	15	0,014	500		

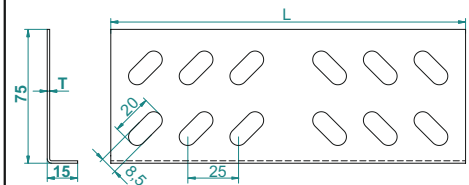
APK H80



This diagram comply with IEC 61537 with connection to 1/5 of the span and the end span =0,8x the span
Q = max. admissible load (kg/m)
L = support distance (m)
f = Deflection (mm) / Max. deflection = L/100
Safely co-efficient = 1.5

Width	Usable Cross-Section
50	38 cm ²
100	78 cm ²
150	118 cm ²
200	158 cm ²
300	238 cm ²
400	318 cm ²
500	398 cm ²
600	478 cm ²

KBE 2



M6x15 Round head squire neck bolt & M6 Flanged nut



APPLICATIONS

Cable routing

MATERIAL

Steel, strip-galv. acc. to the Sendzimir method to TS-EN 10346:2011 (PG)

Available finishes:

HDG-steel, hot-dip galv. to TS-EN ISO 1461:2011 (HDG)
SS- stainless steel AISI 304L and AISI 316L (SS)
EP- powder coating in a full range of colours (RAL)

Thickn. (ga) [mm]: **0.6 | 0.8 | 1.0 | 1.2 | 1.5**

Non Perforated Cable Trays - Return Flanges

Ağır Hizmet Deliksiz Kablo Kanalı - Сплошные лотки



Important!
Joining cable tray sections together only through the use of couplers 2 pcs for 1 Length
To install cable tray - straight use Screw Sets CFS M6 or CFS M8

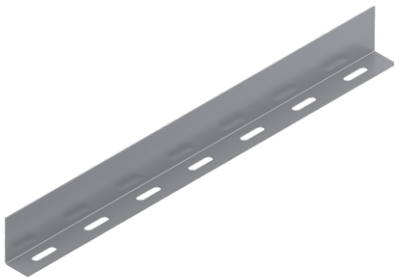
Pre - Galvanised

ADK ... H80		0.6mm	
CODE	Width a mm	Length L mm	KG 1 pc
ADK 807 06 PG	75	3000	1.20
ADK 810 06 PG	100	3000	1.31
ADK 812 06 PG	125	3000	1.43
ADK 815 06 PG	150	3000	1.55
ADK 820 06 PG	200	3000	1.79
ADK ... H80		0.8mm	
CODE	Width a mm	Length L mm	KG 1 pc
ADK 807 08 PG	75	3000	1.59
ADK 810 08 PG	100	3000	1.74
ADK 812 08 PG	125	3000	1.90
ADK 815 08 PG	150	3000	2.06
ADK 820 08 PG	200	3000	2.37
ADK 822 08 PG	225	3000	2.53
ADK 825 08 PG	250	3000	2.69
ADK 830 08 PG	300	3000	3.00
ADK ... H80		1.0mm	
CODE	Width a mm	Length L mm	KG 1 pc
ADK 807 10 PG	75	3000	1.98
ADK 810 10 PG	100	3000	2.17
ADK 812 10 PG	125	3000	2.37
ADK 815 10 PG	150	3000	2.56
ADK 820 10 PG	200	3000	2.96
ADK 822 10 PG	225	3000	3.15
ADK 825 10 PG	250	3000	3.35
ADK 830 10 PG	300	3000	3.74
ADK 840 10 PG	400	3000	4.53

ADK ... H80		1.2mm	
CODE	Width a mm	Length L mm	KG 1 pc
ADK 807 12 PG	75	3000	2.37
ADK 810 12 PG	100	3000	2.60
ADK 812 12 PG	125	3000	2.84
ADK 815 12 PG	150	3000	3.08
ADK 820 12 PG	200	3000	3.55
ADK 822 12 PG	225	3000	3.78
ADK 825 12 PG	250	3000	4.02
ADK 830 12 PG	300	3000	4.49
ADK 840 12 PG	400	3000	5.43
ADK 845 12 PG	450	3000	5.90
ADK 850 12 PG	500	3000	6.37
ADK 860 12 PG	600	3000	7.31
ADK ... H80		1.5mm	
CODE	Width a mm	Length L mm	KG 1 pc
ADK 807 15 PG	75	3000	2.94
ADK 810 15 PG	100	3000	3.23
ADK 812 15 PG	125	3000	3.53
ADK 815 15 PG	150	3000	3.82
ADK 820 15 PG	200	3000	4.41
ADK 822 15 PG	225	3000	4.70
ADK 825 15 PG	250	3000	5.00
ADK 830 15 PG	300	3000	5.59
ADK 840 15 PG	400	3000	6.76
ADK 845 15 PG	450	3000	7.35
ADK 850 15 PG	500	3000	7.94
ADK 860 15 PG	600	3000	9.12

Seperator

Seperatör - Перегородка



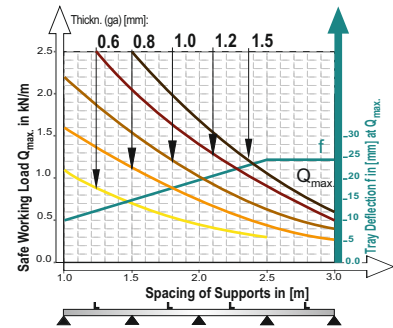
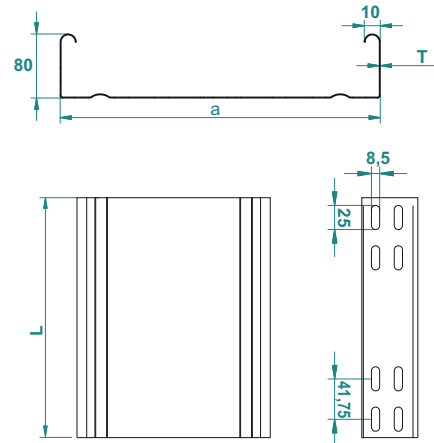
To Install Seperator use CFS bolts and nuts. (M6 or M8)

Pre - Galvanised

SEP 1 ... H80		1.0mm	
CODE	Length L mm	KG 1m	pcs
SEP 180 10 PG	3000	0.75	1

SEP 1 ... H80		1.5mm	
CODE	Length L mm	KG 1m	pcs
SEP 180 15 PG	3000	1.12	1

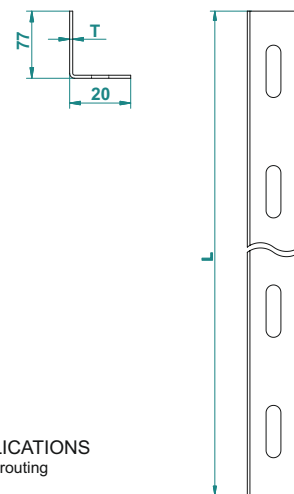
ADK H80



This diagram comply with IEC 61537 with connection to 1/5 of the span and the end span = 0,8x the span
Q = max. admissible load (kg/m)
L = support distance (m)
f = Deflection (mm) / Max. deflection = L/100
Safely co-efficient = 1.5

Width	Usable Cross-Section
50	40 cm ²
100	80 cm ²
150	120 cm ²
200	160 cm ²
300	240 cm ²
400	320 cm ²
500	400 cm ²
600	480 cm ²

SEP 1 H80



APPLICATIONS
Cable routing

MATERIAL

Steel, strip-galv. acc. to the Sendzimir method to TS-EN 10346:2011 (PG)

Available finishes:

- HDG-steel, hot-dip galv. to TS-EN ISO 1461:2011 (HDG)
- SS- stainless steel AISI 304L and AISI 316L (SS)
- EP- powder coating in a full range of colours (RAL)

Thickn. (ga) [mm]: **0.6 0.8 1.0 1.2 1.5**

90° Horizontal Bend of Cable Tray

90° Yatay Kanal Dönüş Elemanı - Угол горизонтальный 90°



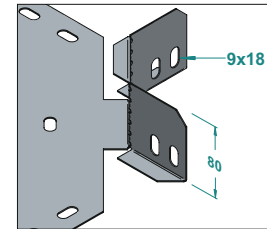
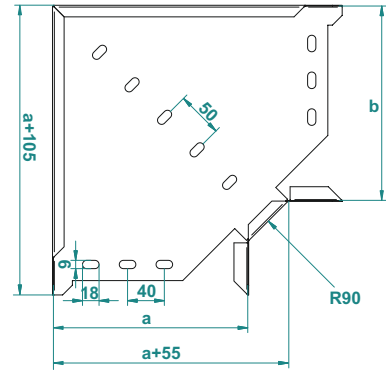
Pre - Galvanised

Important!
To install cable tray - bend use Screw Sets CFS M6 or CFS M8

KA90 ... H80		0.8mm	
CODE	Width a=b mm	KG 1 pc	pcs
KA90 807 08 PG	75	0.30	1
KA90 810 08 PG	100	0.44	1
KA90 812 08 PG	125	0.51	1
KA90 815 08 PG	150	0.59	1
KA90 820 08 PG	200	0.77	1
		1.0mm	
KA90 807 10 PG	75	0.38	1
KA90 810 10 PG	100	0.55	1
KA90 812 10 PG	125	0.64	1
KA90 815 10 PG	150	0.74	1
KA90 820 10 PG	200	0.97	1
KA90 822 10 PG	225	1.09	1
KA90 825 10 PG	250	1.22	1
KA90 830 10 PG	300	1.54	1
KA90 840 10 PG	400	2.18	1

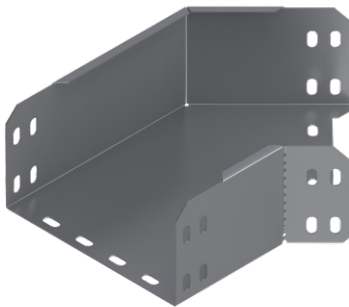
KA90 ... H80		1.2mm	
CODE	Width a=b mm	KG 1 pc	pcs
KA90 830 12 PG	300	1.91	1
KA90 840 12 PG	400	2.72	1
KA90 845 12 PG	450	3.17	1
KA90 850 12 PG	500	3.66	1
KA90 860 12 PG	600	4.75	1
		1.5mm	
KA90 807 15 PG	75	0.57	1
KA90 810 15 PG	100	0.82	1
KA90 812 15 PG	125	0.96	1
KA90 815 15 PG	150	1.11	1
KA90 820 15 PG	200	1.45	1
KA90 822 15 PG	225	1.63	1
KA90 825 15 PG	250	1.83	1
KA90 830 15 PG	300	2.39	1
KA90 840 15 PG	400	3.39	1
KA90 845 15 PG	450	3.96	1
KA90 850 15 PG	500	4.58	1
KA90 860 15 PG	600	5.94	1

KA90 H80



45° Horizontal Bend of Cable Tray

45° Yatay Kanal Dönüş Elemanı - Угол горизонтальный 45°



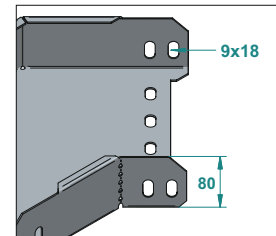
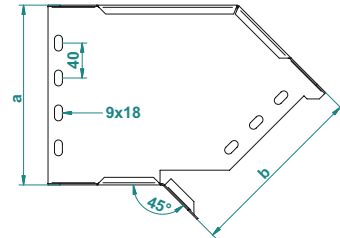
Pre - Galvanised

Important!
To install cable tray - bend use Screw Sets CFS M6 or CFS M8

KA45 ... H80		0.8mm	
CODE	Width a=b mm	KG 1 pc	pcs
KA45 807 08 PG	75	0.32	1
KA45 810 08 PG	100	0.39	1
KA45 812 08 PG	125	0.49	1
KA45 815 08 PG	150	0.57	1
KA45 820 08 PG	200	0.75	1
		1.0mm	
KA45 807 10 PG	75	0.41	1
KA45 810 10 PG	100	0.49	1
KA45 812 10 PG	125	0.62	1
KA45 815 10 PG	150	0.72	1
KA45 820 10 PG	200	0.94	1
KA45 822 10 PG	225	1.06	1
KA45 825 10 PG	250	1.19	1
KA45 830 10 PG	300	1.40	1
KA45 840 10 PG	400	2.03	1

KA45 ... H80		1.2mm	
CODE	Width a=b mm	KG 1 pc	pcs
KA45 830 12 PG	300	1.76	1
KA45 840 12 PG	400	2.54	1
KA45 845 12 PG	450	2.98	1
KA45 850 12 PG	500	3.46	1
KA45 860 12 PG	600	4.52	1
		1.5mm	
KA45 807 15 PG	75	0.61	1
KA45 810 15 PG	100	0.73	1
KA45 812 15 PG	125	0.93	1
KA45 815 15 PG	150	1.08	1
KA45 820 15 PG	200	1.41	1
KA45 822 15 PG	225	1.59	1
KA45 825 15 PG	250	1.78	1
KA45 830 15 PG	300	2.20	1
KA45 840 15 PG	400	3.18	1
KA45 845 15 PG	450	3.73	1
KA45 850 15 PG	500	4.32	1
KA45 860 15 PG	600	5.65	1

KA45 H80



APPLICATIONS

Cable routing

MATERIAL

Steel, strip-galv. acc. to the Sendzimir method to TS-EN 10346:2011 (PG)

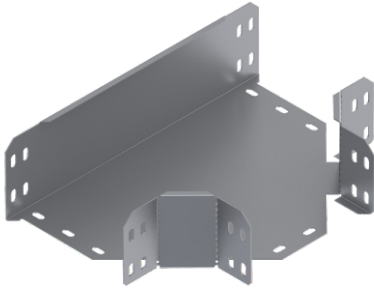
Available finishes:

HDG-steel, hot-dip galv. to TS-EN ISO 1461:2011 (HDG)
SS- stainless steel AISI 304L and AISI 316L (SS)
EP- powder coating in a full range of colours (RAL)

Thickn. (ga) [mm]: **0.6 | 0.8 | 1.0 | 1.2 | 1.5**

Tee Horizontal Bend of Cable Tray

"T" Yatay Kanal Dönüş Elemanı - T-отвод горизонтальный



Pre - Galvanised

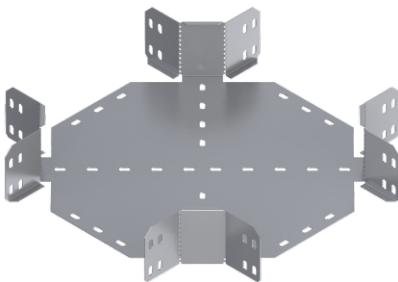
KAT ... H80		0.8mm	
CODE	Width a=b=c mm	kg 1 pc	pcs
KAT 807 08 PG	75	0.40	1
KAT 810 08 PG	100	0.58	1
KAT 812 08 PG	125	0.67	1
KAT 815 08 PG	150	0.76	1
KAT 820 08 PG	200	0.96	1
		1.0mm	
KAT 807 10 PG	75	0.51	1
KAT 810 10 PG	100	0.73	1
KAT 812 10 PG	125	0.84	1
KAT 815 10 PG	150	0.95	1
KAT 820 10 PG	200	1.20	1
KAT 822 10 PG	225	1.34	1
KAT 825 10 PG	250	1.49	1
KAT 830 10 PG	300	1.89	1
KAT 840 10 PG	400	2.61	1

Important!
To install cable tray - bend use Screw Sets CFS M6 or CFS M8

KAT ... H80		1.2mm	
CODE	Width a=b=c mm	kg 1 pc	pcs
KAT 830 12 PG	300	2.37	1
KAT 840 12 PG	400	3.26	1
KAT 845 12 PG	450	3.76	1
KAT 850 12 PG	500	4.30	1
KAT 860 12 PG	600	5.47	1
		1.5mm	
KAT 807 15 PG	75	0.77	1
KAT 810 15 PG	100	1.09	1
KAT 812 15 PG	125	1.25	1
KAT 815 15 PG	150	1.43	1
KAT 820 15 PG	200	1.81	1
KAT 822 15 PG	225	2.01	1
KAT 825 15 PG	250	2.23	1
KAT 830 15 PG	300	2.96	1
KAT 840 15 PG	400	4.08	1
KAT 845 15 PG	450	4.70	1
KAT 850 15 PG	500	5.37	1
KAT 860 15 PG	600	6.84	1

Cross Bend of Cable Tray

4'lü Bağlantı Elemanı- Крестовина



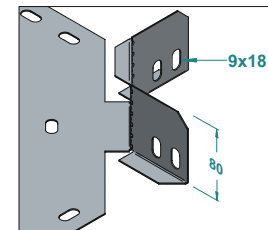
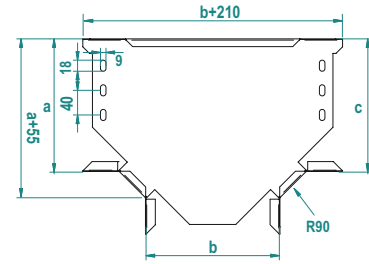
Pre - Galvanised

KAD ... H80		0.8mm	
CODE	Width a=b=c=d mm	kg 1 pc	pcs
KAD 807 08 PG	75	0.54	1
KAD 810 08 PG	100	0.77	1
KAD 812 08 PG	125	0.87	1
KAD 815 08 PG	150	0.97	1
KAD 820 08 PG	200	1.20	1
		1.0mm	
KAD 807 10 PG	75	0.68	1
KAD 810 10 PG	100	0.97	1
KAD 812 10 PG	125	1.09	1
KAD 815 10 PG	150	1.22	1
KAD 820 10 PG	200	1.50	1
KAD 822 10 PG	225	1.65	1
KAD 825 10 PG	250	1.81	1
KAD 830 10 PG	300	2.35	1
KAD 840 10 PG	400	3.14	1

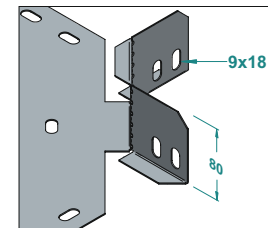
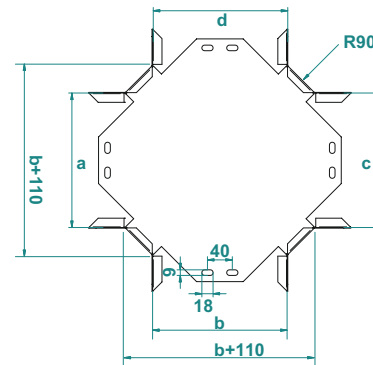
Important!
To install cable tray - bend use Screw Sets CFS M6 or CFS M8

KAD ... H80		1.2mm	
CODE	Width a=b=c=d mm	kg 1 pc	pcs
KAD 830 12 PG	300	2.94	1
KAD 840 12 PG	400	3.92	1
KAD 845 12 PG	450	4.47	1
KAD 850 12 PG	500	5.04	1
KAD 860 12 PG	600	6.31	1
		1.5mm	
KAD 807 15 PG	75	1.02	1
KAD 810 15 PG	100	1.45	1
KAD 812 15 PG	125	1.63	1
KAD 815 15 PG	150	1.83	1
KAD 820 15 PG	200	2.25	1
KAD 822 15 PG	225	2.48	1
KAD 825 15 PG	250	2.72	1
KAD 830 15 PG	300	3.67	1
KAD 840 15 PG	400	4.90	1
KAD 845 15 PG	450	5.58	1
KAD 850 15 PG	500	6.31	1
KAD 860 15 PG	600	7.89	1

KAT H80



KAD H80



APPLICATIONS

Cable routing

MATERIAL

Steel, strip-galv. acc. to the Sendzimir method to TS-EN 10346:2011 (PG)

Available finishes:

HDG-steel, hot-dip galv. to TS-EN ISO 1461:2011 (HDG)

SS- stainless steel AISI 304L and AISI 316L (SS)

EP- powder coating in a full range of colours (RAL)

Thickn. (ga) [mm]: **0.6 0.8 1.0 1.2 1.5**

Vertical Outside Bend of Cable Tray (Flexible)

Kanal Dış Büküye - Арка универсальная, внешний изгиб



Pre - Galvanised

KADB ... H80		0.8mm		kg	pcs
CODE	Width a mm	Length L mm	kg	1 pc	pcs
KADB 807 08 PG	75	600	0.59	1	
KADB 810 08 PG	100	600	0.64	1	
KADB 812 08 PG	125	600	0.76	1	
KADB 815 08 PG	150	600	0.96	1	
KADB 820 08 PG	200	600	1.11	1	
		1.0mm		kg	pcs
KADB 807 10 PG	75	600	0.93	1	
KADB 810 10 PG	100	600	1.02	1	
KADB 812 10 PG	125	600	1.11	1	
KADB 815 10 PG	150	600	1.20	1	
KADB 820 10 PG	200	600	1.39	1	
KADB 822 10 PG	225	600	1.48	1	
KADB 825 10 PG	250	600	1.58	1	
KADB 830 10 PG	300	600	1.71	1	
KADB 840 10 PG	400	600	2.44	1	

Important!
To install vertical bend - use 2 pieces of KBE connectors and 4 sets of CFS bolts and nuts (M6 or M8).

KADB ... H80		1.2mm		kg	pcs
CODE	Width a mm	Length L mm	kg	1 pc	pcs
KADB 830 12 PG	300	600	2.11	1	
KADB 840 12 PG	400	600	3.05	1	
KADB 845 12 PG	450	600	3.32	1	
KADB 850 12 PG	500	600	3.59	1	
KADB 860 12 PG	600	600	4.12	1	
		1.5mm		kg	pcs
KADB 807 15 PG	75	600	1.38	1	
KADB 810 15 PG	100	600	1.52	1	
KADB 812 15 PG	125	600	1.66	1	
KADB 815 15 PG	150	600	1.79	1	
KADB 820 15 PG	200	600	2.07	1	
KADB 822 15 PG	225	600	2.21	1	
KADB 825 15 PG	250	600	2.35	1	
KADB 830 15 PG	300	600	2.62	1	
KADB 840 15 PG	400	600	3.80	1	
KADB 845 15 PG	450	600	4.14	1	
KADB 850 15 PG	500	600	4.47	1	
KADB 860 15 PG	600	600	5.13	1	

Vertical Inside Bend of Cable Tray (Flexible)

Kanal İç Büküye - Арка универсальная, внутренний изгиб



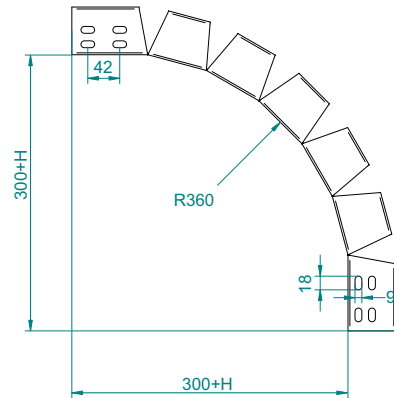
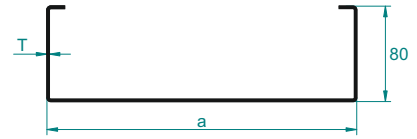
Pre - Galvanised

KAIB ... H80		0.8mm		kg	pcs
CODE	Width a mm	Length L mm	kg	1 pc	pcs
KAIB 807 08 PG	75	600	0.59	1	
KAIB 810 08 PG	100	600	0.64	1	
KAIB 812 08 PG	125	600	0.76	1	
KAIB 815 08 PG	150	600	0.96	1	
KAIB 820 08 PG	200	600	1.11	1	
		1.0mm		kg	pcs
KAIB 807 10 PG	75	600	0.93	1	
KAIB 810 10 PG	100	600	1.02	1	
KAIB 812 10 PG	125	600	1.11	1	
KAIB 815 10 PG	150	600	1.20	1	
KAIB 820 10 PG	200	600	1.39	1	
KAIB 822 10 PG	225	600	1.48	1	
KAIB 825 10 PG	250	600	1.58	1	
KAIB 830 10 PG	300	600	1.71	1	
KAIB 840 10 PG	300	600	2.44	1	

Important!
To install vertical bend - use 2 pieces of KBE connectors and 4 sets of CFS bolts and nuts (M6 or M8).

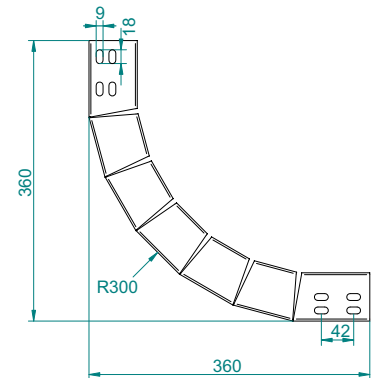
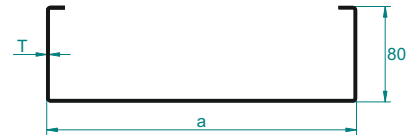
KADB ... H80		1.2mm		kg	pcs
CODE	Width a mm	Length L mm	kg	1 pc	pcs
KAIB 830 12 PG	300	600	2.11	1	
KAIB 840 12 PG	400	600	3.05	1	
KAIB 845 12 PG	450	600	3.32	1	
KAIB 850 12 PG	500	600	3.59	1	
KAIB 860 12 PG	600	600	4.12	1	
		1.5mm		kg	pcs
KAIB 807 15 PG	75	600	1.38	1	
KAIB 810 15 PG	100	600	1.52	1	
KAIB 812 15 PG	125	600	1.66	1	
KAIB 815 15 PG	150	600	1.79	1	
KAIB 820 15 PG	200	600	2.07	1	
KAIB 822 15 PG	225	600	2.21	1	
KAIB 825 15 PG	250	600	2.35	1	
KAIB 830 15 PG	300	600	2.62	1	
KAIB 840 15 PG	400	600	3.80	1	
KAIB 845 15 PG	450	600	4.14	1	
KAIB 850 15 PG	500	600	4.47	1	
KAIB 860 15 PG	600	600	5.13	1	

KADB H80



KADB and KAIB are the same items, shipped flat.
To install - Bend manually during application.
in Flat Length = 600mm

KAIB H80



KADB and KAIB are the same items, shipped flat.
To install - Bend manually during application.
in Flat Length = 600mm

APPLICATIONS

Cable routing

MATERIAL

Steel, strip-galv. acc. to the Sendzimir method to TS-EN 10346:2011 (PG)

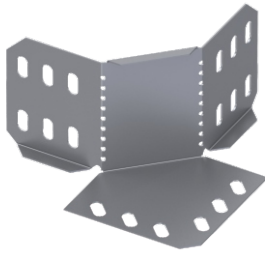
Available finishes:

HDG-steel, hot-dip galv. to TS-EN ISO 1461:2011 (HDG)
SS- stainless steel AISI 304L and AISI 316L (SS)
EP- powder coating in a full range of colours (RAL)

Thickn. (ga) [mm]: **0.6 0.8 1.0 1.2 1.5**

Add On 90° Horizontal Corner Bend of Cable Tray

90° Köşe Yatay Kanal Dönüş Eki - Угол 90° врезной



Pre - Galvanised

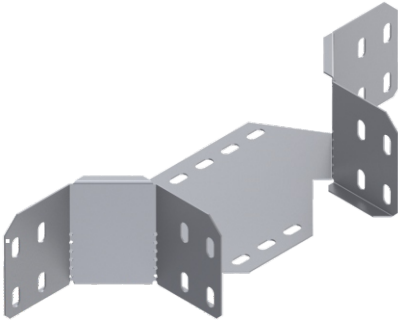
KA90E ... H80		0.8mm		
CODE	a mm	Radius R mm	KG 1 pc	pcs
KA90E 8 08 PG	55	90	0.14	1
KA90ER1 8 08 PG	90	150	0.21	1
KA90ER2 8 08 PG	180	300	0.43	1
		1.0mm		
KA90E 8 10 PG	55	90	0.18	1
KA90ER1 8 10 PG	90	150	0.27	1
KA90ER2 8 10 PG	180	300	0.54	1

Important!
To install cable tray - bend use Screw Sets CFS M6 or CFS M8

KA90E ... H80		1.5mm		
CODE	a mm	Radius R mm	KG 1 pc	pcs
KA90E 8 15 PG	55	90	0.27	1
KA90ER1 8 15 PG	90	150	0.41	1
KA90ER2 8 15 PG	180	300	0.81	1

Add on tee horizontal bend

"T" yatay kanal dönüő eki - T-отвод горизонтальный врезной



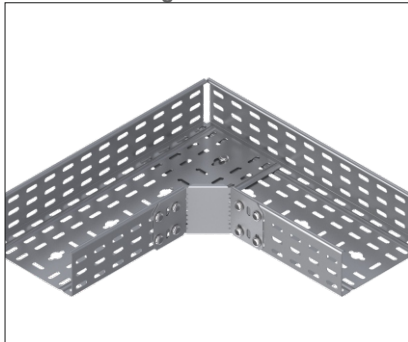
Pre - Galvanised

KATE ... H80		0.8mm		
CODE	Width a mm	Radius R mm	KG 1 pc	pcs
KATE 810 10 PG	100	90	0.35	1
KATE 812 10 PG	125	90	0.36	1
KATE 815 10 PG	150	90	0.39	1
KATE 820 10 PG	200	90	0.44	1
		1.0mm		
KATE 810 10 PG	100	90	0.44	1
KATE 812 10 PG	125	90	0.46	1
KATE 815 10 PG	150	90	0.49	1
KATE 820 10 PG	200	90	0.55	1
KATE 822 10 PG	225	90	0.58	1
KATE 825 10 PG	250	90	0.60	1
KATE 830 10 PG	300	90	0.63	1
KATE 840 10 PG	400	90	0.74	1

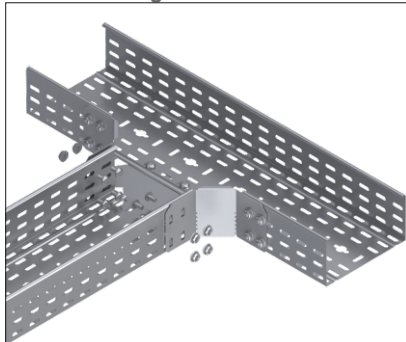
Important!
To install cable tray - bend use Screw Sets CFS M6 or CFS M8

KATE ... H80		1.2mm		
CODE	Width a mm	Radius R mm	KG 1 pc	pcs
KATE 830 12 PG	300	90	0.79	1
KATE 840 12 PG	400	90	0.93	1
KATE 845 12 PG	450	90	0.99	1
KATE 850 12 PG	500	90	0.98	1
KATE 860 12 PG	600	90	1.19	1
		1.5mm		
KATER1 810 15 PG	100	150	1.18	1
KATER1 812 15 PG	125	150	1.24	1
KATER1 815 15 PG	150	150	1.31	1
KATER1 820 15 PG	200	150	1.43	1
KATER1 822 15 PG	225	150	1.50	1
KATER1 825 15 PG	250	150	1.56	1
KATER1 830 15 PG	300	150	1.69	1
KATER1 840 15 PG	400	150	1.95	1
KATER1 845 15 PG	450	150	2.07	1
KATER1 850 15 PG	500	150	2.20	1
KATER1 860 15 PG	600	150	2.46	1

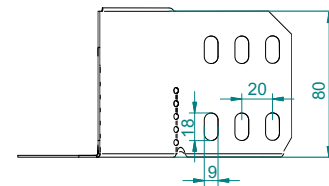
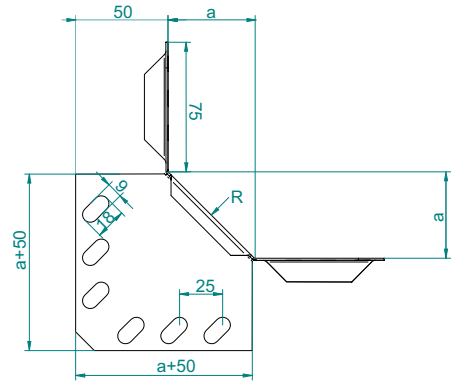
KA90E Mounting



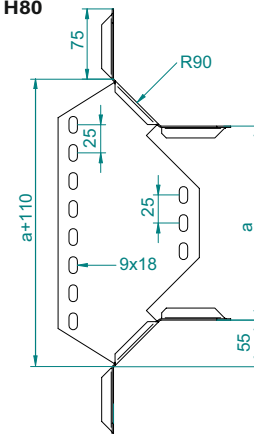
KATE Mounting



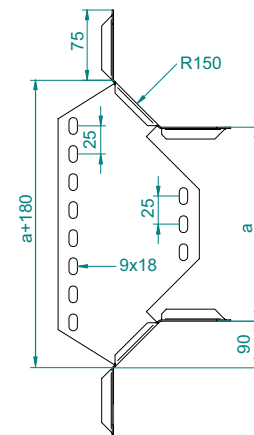
KA90E H80



KATE H80



KATER1 H80



APPLICATIONS

Cable routing

MATERIAL

Steel, strip-galv. acc. to the Sendzimir method to TS-EN 10346:2011 (PG)

Available finishes:

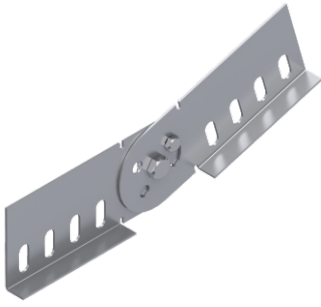
HDG-steel, hot-dip galv. to TS-EN ISO 1461:2011 (HDG)
SS- stainless steel AISI 304L and AISI 316L (SS)
EP- powder coating in a full range of colours (RAL)

Thickn. (ga) [mm]:

0.6 0.8 1.0 1.2 1.5

Adjustable Vertical Connector (2 Pcs)

Dikey Seviye Degistirme Eki (2 Adet) - Шарнирный соединитель для лотка

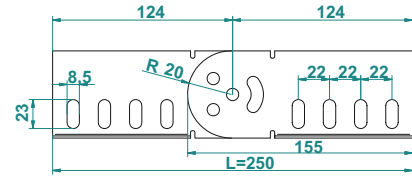
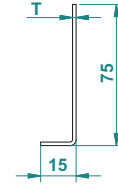


Pre - Galvanised

To Install one lenght; use 2 pieces of BDD connector and 10 sets of CFS bolts and nuts. (M6 or M8)

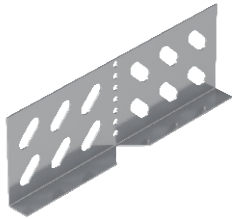
BDD 2 ... H80				BDD 2 ... H80			
1.2mm				1.5mm			
CODE	Length L mm	KG 1 pc	pcs	CODE	Length L mm	KG 1 pc	pcs
BDD 280 12 PG	250	0.22	1	BDD 280 15 PG	250	0.27	1

BDD 2 H80



Adjustable Horizontal Connector

Yatay Seviye Degistirme Eki - Угловой соединитель

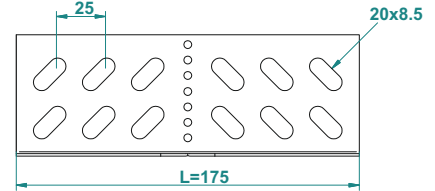
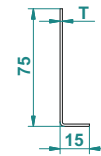


Pre - Galvanised

To Install one lenght; use 2 pieces of BYD connector and 8 sets of CFS bolts and nuts. (M6 or M8)

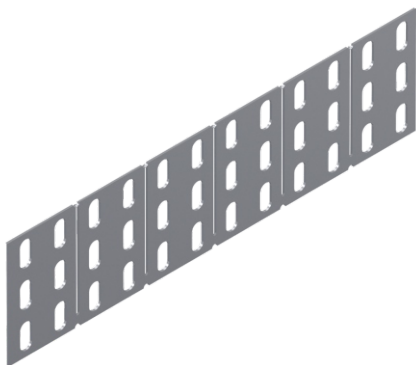
BYD 2 ... H80				BYD 2 ... H80			
1.2mm				1.5mm			
CODE	Length L mm	KG 1 pc	pcs	CODE	Length L mm	KG 1 pc	pcs
BYD 280 12 PG	175	0,12	1	BYD 280 15 PG	175	0.15	1

BYD 2 H80



Adjustable horizontal connector - Long Type

Yatay seviye degistirme eki uzun tip - Угловой соединитель - длинный

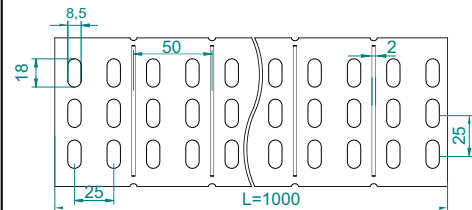
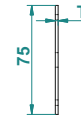


Pre - Galvanised

Important!
To install cable tray - connector use Screw Sets CFS M6 or CFS M8

BYDU 1 ... H80				BYDU 1 ... H80			
1.2mm				1.5mm			
CODE	Length L mm	KG 1 pc	pcs	CODE	Length L mm	KG 1 pc	pcs
BYDU 180 12 PG	1000	0.29	1	BYDU 180 15 PG	1000	0.36	1

BYDU 1 H60



APPLICATIONS

Cable routing

MATERIAL

Steel, strip-galv. acc. to the Sendzimir method to TS-EN 10346:2011 (PG)

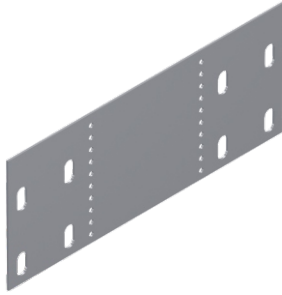
Available finishes:

HDG-steel, hot-dip galv. to TS-EN ISO 1461:2011 (HDG)
SS- stainless steel AISI 304L and AISI 316L (SS)
EP- powder coating in a full range of colours (RAL)

Thickn. (ga) [mm]: **0.6 | 0.8 | 1.0 | 1.2 | 1.5**

Reducer Connector - Single Type

Redüksiyon Eki (Tek) - Редукционный переходник



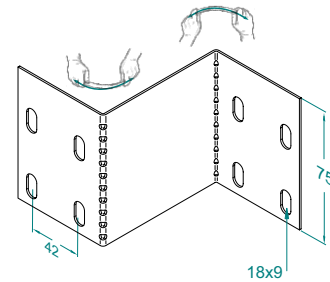
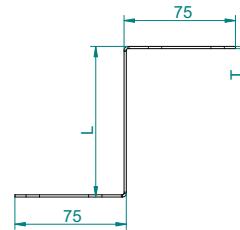
Important!
To install cable tray - reducer use Screw Sets
CFS M6 or CFS M8

Pre - Galvanised

RT ... H80		1.5mm	
CODE	Length L mm	kg 1 pc	pcs
RT 80 25 15 PG	25	0,12	1
RT 80 50 15 PG	50	0,14	1
RT 80 75 15 PG	75	0,16	1
RT 80 100 15 PG	100	0,18	1
RT 80 125 15 PG	125	0,19	1
RT 80 150 15 PG	150	0,21	1
RT 80 175 15 PG	175	0,23	1
RT 80 200 15 PG	200	0,25	1
RT 80 225 15 PG	225	0,26	1
RT 80 250 15 PG	250	0,28	1
RT 80 275 15 PG	275	0,30	1
RT 80 300 15 PG	300	0,32	1

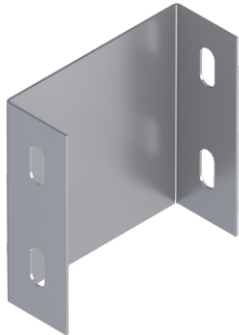
RT ... H80		1.5mm	
CODE	Length L mm	kg 1 pc	pcs
RT 80 325 15 PG	325	0,34	1
RT 80 350 15 PG	350	0,35	1
RT 80 375 15 PG	375	0,37	1
RT 80 400 15 PG	400	0,39	1
RT 80 425 15 PG	425	0,41	1
RT 80 450 15 PG	450	0,42	1
RT 80 475 15 PG	475	0,44	1
RT 80 500 15 PG	500	0,46	1
RT 80 525 15 PG	525	0,48	1
RT 80 550 15 PG	550	0,49	1
RT 80 575 15 PG	575	0,51	1

RT H80



Stop End (Blind End)

Sonlandırma - Заглушка



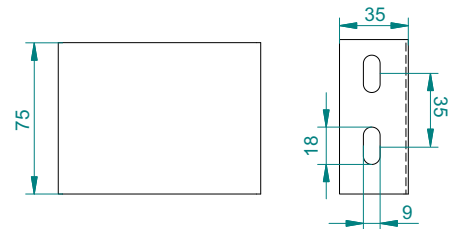
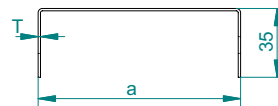
Important!
To install cable tray - stop end use Screw Sets
CFS M6 or CFS M8

Pre - Galvanised

SON ... H80		1.2mm	
CODE	Width a mm	kg 1 pc	pcs
SON 807 12 PG	75	0,11	1
SON 810 12 PG	100	0,12	1
SON 812 12 PG	125	0,14	1
SON 815 12 PG	150	0,15	1
SON 820 12 PG	200	0,18	1
SON 822 12 PG	225	0,19	1
SON 825 12 PG	250	0,21	1
SON 830 12 PG	300	0,24	1
SON 840 12 PG	400	0,29	1
SON 845 12 PG	450	0,32	1
SON 850 12 PG	500	0,35	1
SON 860 12 PG	600	0,41	1

SON ... H80		1.5mm	
CODE	Width a mm	kg 1 pc	pcs
SON 807 15 PG	75	0,14	1
SON 810 15 PG	100	0,16	1
SON 812 15 PG	125	0,17	1
SON 815 15 PG	150	0,19	1
SON 820 15 PG	200	0,23	1
SON 822 15 PG	225	0,24	1
SON 825 15 PG	250	0,26	1
SON 830 15 PG	300	0,30	1
SON 840 15 PG	400	0,37	1
SON 845 15 PG	450	0,40	1
SON 850 15 PG	500	0,44	1
SON 860 15 PG	600	0,51	1

SON H80



APPLICATIONS

Cable routing

MATERIAL

Steel, strip-galv. acc. to the Sendzimir method
to TS-EN 10346:2011 (PG)

Available finishes:

HDG-steel, hot-dip galv. to TS-EN ISO 1461:2011 (HDG)
SS- stainless steel AISI 304L and AISI 316L (SS)
EP- powder coating in a full range of colours (RAL)

Thickn. (ga) [mm]: **0.6 | 0.8 | 1.0 | 1.2 | 1.5**