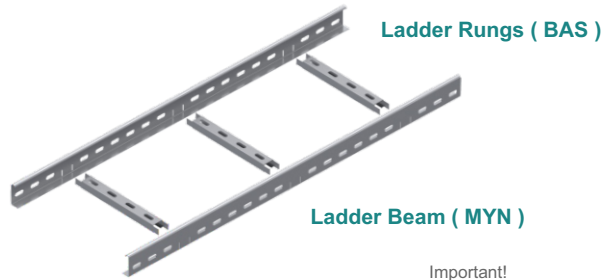


Modular Cable Ladder Side Beam

Modüler Merdiven Yan Kenarı - Боковая планка кабельроста



Ladder Rungs (BAS)

Ladder Beam (MYN)

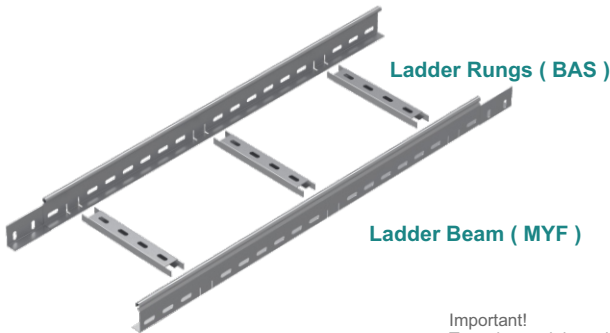
Important!
To make modular cable ladder use BAS rungs

Pre - Galvanized

MYN				MYN			
1.2mm				1.5mm			
CODE	Height H mm	KG 1 mt	pcs	CODE	Height H mm	KG 1 mt	pcs
MYN 40 12 PG	40	0.59	1	MYN 40 15 PG	40	0.74	1
MYN 50 12 PG	50	0.68	1	MYN 50 15 PG	50	0.85	1
MYN 60 12 PG	60	0.76	1	MYN 60 15 PG	60	0.95	1
MYN 70 12 PG	70	0.85	1	MYN 70 15 PG	70	1.06	1
MYN 80 12 PG	80	0.93	1	MYN 80 15 PG	80	1.17	1
MYN 100 12 PG	100	1.10	1	MYN 100 15 PG	100	1.38	1

Modular Cable Ladder Side Beam - Quick Fix Type

Geçmeli Tip Modüler Merdiven Yan Kenarı - Боковая планка кабельроста



Ladder Rungs (BAS)

Ladder Beam (MYF)

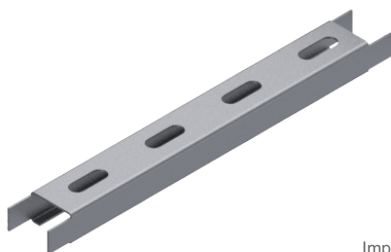
Important!
To make modular cable ladder use BAS rungs

Pre - Galvanized

MYF				MYF			
1.0mm				1.2mm			
CODE	Height H mm	KG 1 mt	pcs	CODE	Height H mm	KG 1 mt	pcs
MYF 40 10 PG	40	0.47	1	MYF 40 12 PG	40	0.59	1
MYF 50 10 PG	50	0.54	1	MYF 50 12 PG	50	0.68	1
MYF 60 10 PG	60	0.61	1	MYF 60 12 PG	60	0.76	1
MYF 70 10 PG	70	0.68	1	MYF 70 12 PG	70	0.85	1
MYF 80 10 PG	80	0.74	1	MYF 80 12 PG	80	0.93	1
MYF 100 10 PG	100	0.88	1	MYF 100 12 PG	100	1.10	1

35x15 Modular Cable Ladder Rung

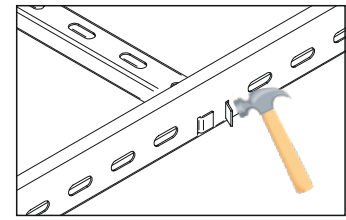
35x15 Modüler Kablo Merdiven Basamağı - Перекладина кабельроста



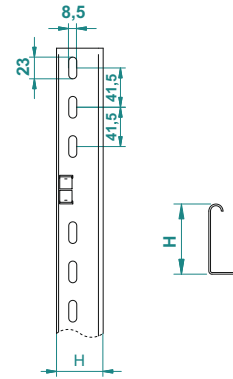
Pre - Galvanized

Important!
To make modular cable ladder - use MYN side beams

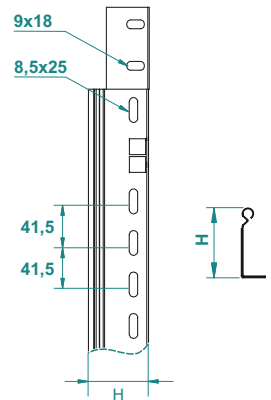
BAS				BAS			
1.0mm				1.2mm			
CODE	Width W mm	KG 1 pc	pcs	CODE	Width W mm	KG 1 pc	pcs
BAS 100 10 PG	100	0.06	1	BAS 100 12 PG	100	0.07	1
BAS 150 10 PG	150	0.08	1	BAS 150 12 PG	150	0.10	1
BAS 200 10 PG	200	0.11	1	BAS 200 12 PG	200	0.13	1
BAS 250 10 PG	250	0.13	1	BAS 250 12 PG	250	0.16	1
BAS 300 10 PG	300	0.16	1	BAS 300 12 PG	300	0.19	1
BAS 400 10 PG	400	0.20	1	BAS 400 12 PG	400	0.25	1
BAS 450 10 PG	450	0.22	1	BAS 450 12 PG	450	0.28	1
BAS 500 10 PG	500	0.26	1	BAS 500 12 PG	500	0.31	1
BAS 600 10 PG	600	0.31	1	BAS 600 12 PG	600	0.37	1



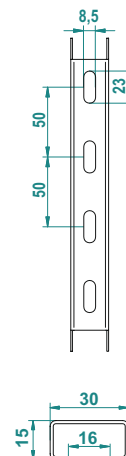
MYN



MYF



BAS



APPLICATIONS
Cable routing

MATERIAL

Steel, strip-galv. acc. to the Sendzimir method to TS-EN 10346:2011 (PG)

Available finishes:

HDG-steel, hot-dip galv. to TS-EN ISO 1461:2011 (HDG)

SS- stainless steel AISI 304L and AISI 316L (SS)

EP- powder coating in a full range of colours (RAL)

Thickn. (ga) [mm]: **1.2 1.5**